

FTL
FLANGES TOOL LIMITER

T17
standard



00023517

T17
side scraper
optional



T21
optional
Tungsten carbide



00023521

T21
side scraper
Tungsten carbide
optional



HARDOX
IN MY BODY

MY INNER +
STRENX

SS FORREST PISTON

FOREST HYDRAULIC SHREDDER



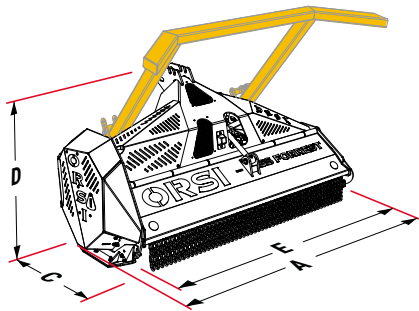
maximum cutting
Ø 15 cm



50-75 HP

THE BEST HAS A NAME
ORSI

OVERGROWN VEGETATION,
BRANCHES, SHRUBS



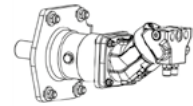
SS-FORREST	A cm/in	C cm/in	D cm/in	E cm/in
150	180/ 71	101/ 40	100/ 39	165/ 65
175	205/ 81	101/ 40	100/ 39	190/ 75
200	235/ 93	101/ 40	100/ 39	220/ 87

PISTON CIL. FISSA	RPM	Drop	Icon
32 c.c.	2.200 - 2.500	70÷100 L/18÷26 gal min	350 max BAR/ 5076 PSI
45 c.c.	2.200 - 2.500	90÷110 L/24÷29 gal min	350 max BAR/ 5076 PSI
56 c.c.	2.200 - 2.500	110÷140 L/29÷37 gal min	350 max BAR/ 5076 PSI
PISTON CIL. VARIABILE (optional)			
56/80 c.c.	2.200 - 2.500	115÷150 L/ 30÷40 gal min	350 max BAR/ 5076 PSI

STRENGTH POINTS



INTERNAL DOUBLE FRAME
IN HARDOX



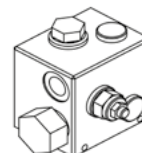
rexroth
A Bosch Company

REXROTH AXIAL PISTONS
ENGINE INCLINED AXIS



ROTOR WITH "FLANGES TOOL LIMITER" (FTL) TECHNOLOGY

Excellent performance and speed with less power requested. The working depth of the tools is limited by steel flanges, reducing the requested power and still guaranteeing high performances.





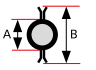
VALVE ORSI 3 IN 1



SPHERICAL ROLLER BERINGS ON
DOUBLE ROLLERS ROW


SS FORREST PISTON

PROFESSIONAL SERIES

SS FORREST PISTON		150	175
€	Price	€ 22.000	€ 22.200
Code		-	-
TECHNICAL SPECIFICATIONS			
Working width		150 cm/ 59 in	174 cm/ 69 in
Machine weight*		680/755 kg - 1499/1664 lbs	760/835 kg - 1676/1841 lbs
tools	 T17 hammers standard	26 + 2 (1dx - 1sx)	30 + 2 (1dx - 1sx)
	 T21 hammers optional	26 + 2 (1dx - 1sx)	30 + 2 (1dx - 1sx)
	A	219 mm / 9 in	219 mm / 9 in
	B	369 mm / 15 in	369 mm / 15 in
N° belts		4	6

*variable weight depending the configuration



SS FORREST PISTON		150	175
MACHINE			
Monocoque frame in Hardox th.6 mm		✓	✓
Hydraulic rear tailgate		✓	✓
Hydraulic pipes protected inside the frame		✓	✓
Adjustable height skids		✓	✓
Double row of front and rear chains		✓	✓
4 Bars of counter - knife		✓	✓
Reflectors		✓	✓
Mechanically adjustable arch for pushing down branches		✓	✓
	6 way solenoid valve 12 Volt for machine not set up for command bonnet opening	✓	✓
OPTIONAL	Plates kit on protection chains	€ 385	€ 405
OPTIONAL	Extra cost for non-universal blade attachment	€ 985	€ 985
TRANSMISSION			
Rotor with "flanges tool limiter" (FTL) technology		✓	✓
Unidirectional motor with external axial piston drainage		✓	✓
Lateral transmission with 6 belts		✓	✓
Oscillating bearings with double column of balls		✓	✓
Automatic belt tensioner		✓	✓
OPTIONAL	Rexroth axial piston motor with variable displacement cc 56/80	€ 1.565	€ 1.565
OPTIONAL	Supplement for rotor with hammers T21 with Tungsten carbide	€ 1.881	€ 2.150
HYDRAULIC SYSTEM			
One way valve on return		✓	✓
ORSI V3.1-1 which includes valve of max. pressure + anticavitation valve + flow regulator MAX back pressure on oil drainage = 2 BAR		✓	✓