

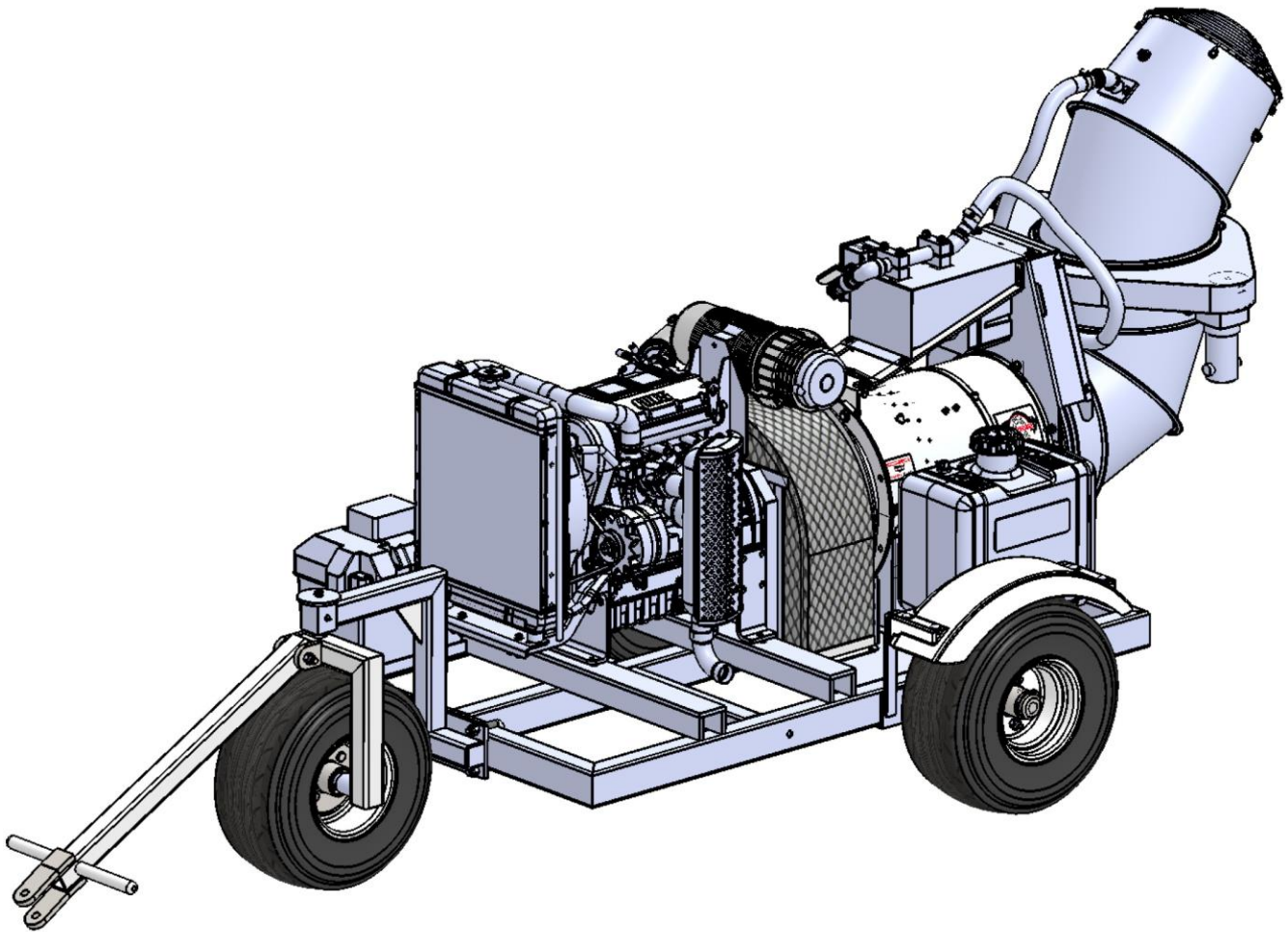
BUFFALO TURBINE

180 Zoar Valley Road
Springville, NY 14141

TEL: 716 592 2700 FAX: 716 592 2460

EMAIL: info@buffaloturbine.com

WEBSITE: www.buffaloturbine.com



BUFFALO TURBINE'S BT-MDC2 ORIGINAL INSTRUCTIONS AND PARTS MANUAL

06/20 -BT MAN

TABLE OF CONTENTS

| Ref. Number | Description | Page Number |
|-------------|--|-------------|
| 1.0 | Introduction | 2 |
| 2.0 | Safety | 3 |
| 2.1 | Safety Decals | 4 |
| 2.2 | General Safety | 4 |
| 2.3 | Operating Safety | 4 |
| 2.4 | Maintenance Safety | 4 |
| 2.5 | Transport Safety | 5 |
| 2.6 | Storage Safety | 5 |
| 2.7 | Sign-off Form | 5 |
| 3.0 | Warranty Information | 6 |
| 3.1 | Warranty Registration Form | 7 |
| 4.0 | Operations | 8 |
| 4.1 | To the new operator or owner | 8 |
| 4.2 | Break-in | 8 |
| 4.3 | Pre-Operation Checks | 8 |
| 4.4 | Model BT-MDC2 Assembly Instructions | 9-10 |
| 4.5 | Field Operation | 11 |
| 4.6 | Operating RPM | 11 |
| 4.7 | Storage | 11 |
| 5.0 | Troubleshooting | 11 |
| 6.0 | Machine Specification | 12 |
| 7.0 | Maintenance | 13 |
| 7.1 | Maintenance Safety | 13 |
| 7.2 | Fluids | 13 |
| 7.3 | Service Checklist | 13 |
| | Declaration of Conformity | 14 |
| | Morflex Coupling Parts | 15 |
| | Morflex Coupling Installation | 16 |
| | BT-MDC2 Parts Reference (After serial # 24663) | 17 |
| | Oscillation Attachment Kit Parts Diagram | 18 |
| | Oscillation Attachment Kit Parts Reference | 19 |
| | BT-MDC2 Sub Assemblies | 20-21 |
| | Gyratory Atomizing Nozzle parts breakdown | 22 |
| | Bill of Materials for BT-MDC2 | 23 |
| | BT-MDC2 Wireless Remote System Manual | 24 |
| | Wiring Schematic for Wireless Remote System | 25 |
| | Wireless system warranty information | 26 |
| | Wireless Remote System Diagnostic Tests | 27-30 |
| | Nozzle Options | 31 |
| | Buffalo Turbine Additional Products | 32 |
| | | |
| | | |
| | | |
| | | |

1.0 INTRODUCTION

Congratulations on your choice of a Buffalo Turbine Monsoon. This equipment has been designed and manufactured to meet the needs of the construction/demolition industry.

Safe, efficient and trouble-free operation of your Buffalo Turbine Monsoon requires that you and anyone else, who will be operating or maintaining the Blower, read and understand all of the safety, operation, maintenance and troubleshooting information contained within this Operator's manual.

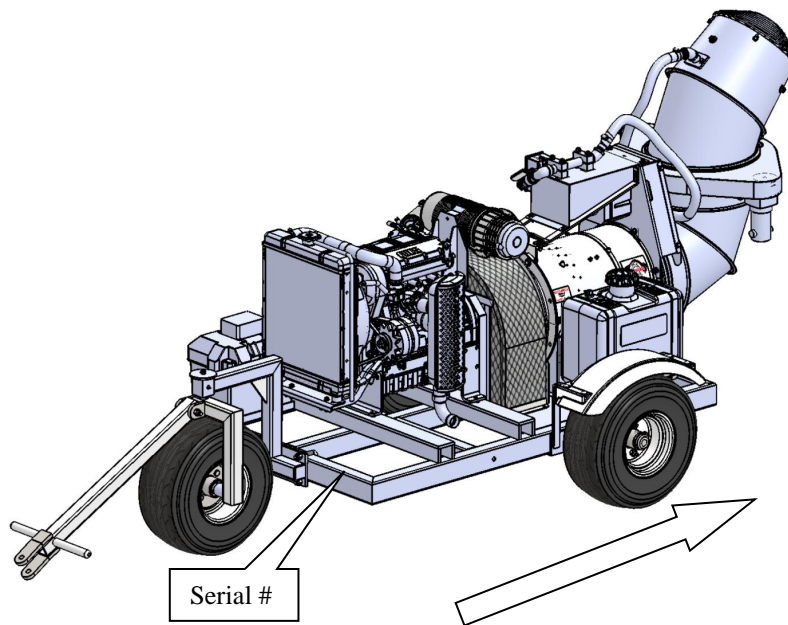
This Manual covers the BT-MDC2 Turbine Monsoon.

Keep this manual handy for frequent reference and to pass on to new operators or owners. Call your Buffalo Turbine dealer or distributor if you need assistance, information, or additional copies of the manuals.

SERIAL NUMBER LOCATION

Always give your dealer the serial number of your Monsoon when ordering parts or requesting service or other information.

The serial number plate(s) is located where indicated in the pictures below. Please document the number in the space provided for easy reference.



OPERATOR ORIENTATION – The directions left, right, front and rear, as mentioned throughout the manual, are as seen from the driver's seat and facing in the direction of travel.

MODEL BT-MDC2 RIGHT FRONT TOP SURFACE OF FRAME

Serial Number: _____

2.0 SAFETY

YOU are responsible for the **SAFE** operation and maintenance of your Buffalo Turbine Monsoon. **YOU** must ensure that you and anyone else, who is going to operate, maintain or work around the Buffalo Turbine Monsoon be familiar with the operating and maintenance procedures and related **SAFETY** information contained in this manual. This manual will take you step-by-step through your working day and alerts you to all good safety practice while operating the Monsoon.

Remember **YOU** are the key to safety. Good safety practices not only protect you but also the people around you. Make these practices a working part of your safety program. Be certain that **EVERYONE** operating this machine is familiar with the procedures recommended and follows safety precautions. Remember most accidents can be prevented. Do not risk injury or death by ignoring good safety practices.

- Monsoon owners must give operating instructions to operators or employees before allowing them to operate the Monsoon, and at least annually thereafter.
- The most important safety device on this equipment is a **SAFE** operator. It is the operator's responsibility to read and understand **ALL** Safety and Operating instructions in the manual and to follow these. All accidents can be avoided.
- A person who has not read and understood all operating instructions is not qualified to operate the machine. An untrained operator exposes themselves and bystanders to possible serious injury or death.
- Do not modify the equipment in any way. Unauthorized modification may impair the function and/or safety which could affect the life of the equipment.
- Think **SAFETY!** Work **SAFELY!**

This Safety Alert symbol means **ATTENTION! BECOME ALERT! YOUR SAFETY IS INVOLVED!**

The Safety Alert symbol identifies important safety messages on the Buffalo Turbine Monsoon and in the manual. When you see this symbol, be alert to the possibility of personal injury or death. Follow the instructions in the safety message.

Why is **SAFETY** important to you?



**3 Big Reasons: Accidents Disable and Kill
Accidents Cost
Accidents Can Be Avoided**

SIGNAL WORDS: Note the use of the signal words **DANGER**, **WARNING** and **CAUTION** with the safety messages. The appropriate signal word for each message has been selected using the following guidelines

1. **DANGER** –injury or death if the proper precautions are not taken.
2. **WARNING** -- A specific hazard or unsafe practice that **COULD** result in severe personal injury or death if proper precautions are not taken.
3. **CAUTION** – Unsafe practices that **COULD** result in personal injury if proper practices are not taken, or as a reminder of good safety.

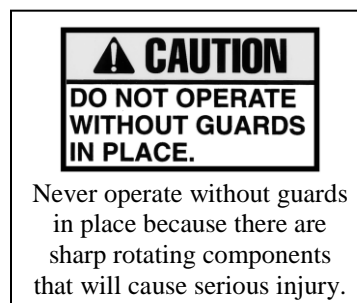
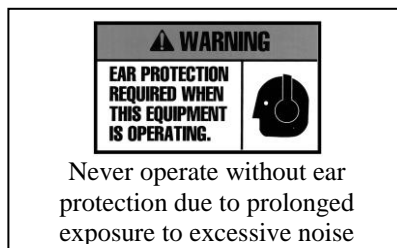
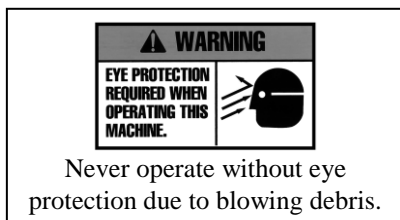
The Safety Alert symbol identifies important safety messages on the Buffalo Turbine Monsoon and in the manual. When you see this symbol, be alert to the possibility of personal injury or death. Follow the instructions in the safety message.

2.1 SAFETY DECALS

The types of decals on the blower unit are shown below. Good safety requires that you familiarize yourself with the various Safety Decals, the type of warning and the area, or particular function related to that area that requires your **SAFETY AWARENESS.* THINK SAFETY! WORK SAFELY!**

!ATTENTION!

1. **KEEP HANDS, FEET AND CLOTHING AWAY FROM POWER DRIVEN PARTS.**
2. **STOP ENGINE AND REMOVE KEY BEFORE LEAVING OPERATOR'S POSITION.**
3. **MACHINE MUST COME TO A COMPLETE STOP BEFORE ANY MAINTENANCE, TO INCLUDE ADJUSTING, LUBRICATING OR CLEANING, IS PERFORMED.**
4. **KEEP PEOPLE AND PETS AT SAFE DISTANCE FROM MACHINE.**
5. **KEEP ALL GUARDS AND SHIELDS IN PLACE.**



REMEMBER – If safety decals have been damaged, removed, become illegible or parts replaced without decals, new decals must be applied. New decals are available from your authorized dealer.

2.2 GENERAL SAFETY

1. Read and understand the Operator's Manual and all safety signs before operating, maintaining, and adjusting.
2. Provide a first-aid kit for use in case of an accident. Store in a highly visible place.
3. Provide a fire extinguisher for use in case of an accident. Store in a highly visible place.
4. Wear appropriate protective gear. This list includes but is not limited to:
 - A hard hat
 - Protective shoes with slip resistant soles
 - Protective glasses or goggles
 - Heavy gloves
 - Wet weather gear
 - Hearing protection
5. Do not operate without guards or shields properly installed.
6. Do not allow riders.
7. **Wear appropriate ear protection for prolonged exposure to excessive noise.**
8. **(All Models) Set Blower on the ground, stop engine, chock wheels, remove ignition key and wait for all moving parts to stop before dismounting to service or adjust.**
9. Clear the area of people, especially small children, before starting the unit.
10. Review all safety related items annually with all personnel who will be operating or maintaining the Blower.
11. Keep hands, feet, hair and clothing away from moving parts. Operate equipment only while seated in the operator's seat.

2.3 OPERATING SAFETY

1. Read and understand the Operator's Manual and all safety signs before operating, servicing or adjusting.
2. Before servicing or repairing, **Set Monsoon on the ground, stop engine, chock wheels, remove key, and wait for all moving parts to stop.**

2.4 MAINTENANCE SAFETY

1. Read and follow ALL general, operating, maintenance and safety information in this manual.
2. Support the machine with blocks or safety stands when changing tires or working beneath it.
3. Set Monsoon on the ground, stop engine, chock wheels, remove ignition key and wait for all moving parts to stop before operating, servicing or adjusting.
4. Make sure all guards are in place and properly secured when operating or maintaining the Blower.

*** NEVER HAVE NOZZLE POINTING AT/NEAR ANYONE DURING STARTUP***

Buffalo Turbine Warranty Policy

3.0 MACHINE WARRANTY INFORMATION

Buffalo Turbine warrants the DEBRIS BLOWER, to the original owner, to be free from defects in material and workmanship, under normal use and service. **All machines must have a completed registration form sent to Buffalo Turbine within 30 days of purchase for warranty to apply.** Obligation under this warranty shall extend for a period of 10 years from date of purchase and, at the option of Buffalo Turbine, replacement of any parts found, upon inspection by Buffalo Turbine, to be defective. Any parts replaced under warranty will have the remainder of the warranty from the original date of purchase.

Warranty parts during first 2 years will be shipped free of charge via standard ground shipping

If expedited shipping is required charges will be paid by the end user

Year 1: parts and labor

Year 2: parts only

Customer will be required to pay shipping charges for years 3-10

Year 3: Engine, per engine manufacturer's standard / Turbine Assembly / Frame (parts only)

Year 4-10: Turbine Assembly / Frame (parts will be prorated)

Buffalo Turbine reserves the right to incorporate improvements in material and design of its products without notice and is not obligated to make the same improvements to equipment previously manufactured.

ALL WARRANTY REPAIRS NEED PRE-APPROVAL BY A FACTORY PERSON (FROM BUFFALO TURBINE) PRIOR TO COMMENCING WITH A WARRANTY REPAIR TO INCLUDE SERIAL NUMBER AND HOURS FROM HOUR METER (IF EQUIPPED). PRE-APPROVAL WILL BE REQUIRED BY THE END USER AND DEALER/DISTRIBUTOR LEVEL.

Factory ordered Buffalo Turbine parts must be used when filing a warranty claim.

LIMITATIONS OF LIABILITY

This warranty is expressly in lieu of all other warranties expressed or implied and all other obligations or liabilities on our part of any kind or character, including liabilities for alleged representations or negligence. We neither assume nor authorize any other person to assume on our behalf, any liability in connection with the subsequent sale of the **DEBRIS BLOWER**. This warranty shall not apply to any DEBRIS BLOWER, which has been altered outside the factory in any way so as, in the judgment of Buffalo Turbine, to affect its operation or reliability, or which has been subject to misuse, neglect, or accident. This warranty does not cover parts and accessories, which are under separate guarantee from the manufacturers and service can be, obtained from their service facilities. No warranty is extended to regular service items such as lubricants, belts, paint and the like.

Original Instruction Manual

The Purchaser acknowledges having receiving training in the safe operation of the DEBRIS BLOWER and further acknowledges that Buffalo Turbine does not assume any liability resulting from the operation of the DEBRIS BLOWER in any manner other than described in the Operator's Manual supplied at the time of purchase.

WARRANTY VOID IF NOT REGISTERED (see Page 2 for warranty registration form)

DO NOT SPLIT THE TURBINE HOUSING FOR ANY REASON.

DO NOT ATTEMPT TO SERVICE OR DISASSEMBLE THE TURBINE BLOWER.

DO NOT USE THE TOP OF THE TURBINE HOUSING TO STRAP OR TIE DOWN BLOWER UNITS.

Unauthorized service work on the Turbine Blower will null and void all warranties.

If there are any questions regarding any of our products call Buffalo Turbine at 716 592 2700.

3.1 Warranty Registration Form

BUFFALO TURBINE

WARRANTY REGISTRATION FORM & INSPECTION REPORT

Any units not registered with Buffalo Turbine are not eligible for warranty claims
This form must be filled out by the dealer and signed by both the dealer and the customer at the time of delivery

Customer's Name _____ Dealer's Name _____

Address _____ Address _____

City, State, Zip, Country _____ City, State, Zip, Country _____

Email Address (important) _____ Email Address _____

Telephone Number _____

Blower Model _____

Circle one:

Serial Number _____

Commercial Use

Delivery Date _____

Private Use

DEALER INSPECTION REPORT

SAFETY CHECKS

_____ Tire Pressure Check -- Model KB

_____ All Decals Installed

_____ Wheel Bolts

_____ Review Operating and Safety Instructions

_____ Belt Tension

_____ Lubricate Machine

_____ Guards in Place

_____ Fasteners Tight

_____ Trailer assembly bolts properly installed and tightened

ALL 3 POINT HITCH MODELS: PTO SHAFTS MUST TELESCOPE IN EVERY POSITION

I have thoroughly instructed the buyer on the above described equipment which reviews the included Operator's Manual content, equipment care, adjustments, safe operation and applicable warranty policy.

Date _____

Dealer's Rep. Signature _____

The above equipment and Operator's Manual has been received by me and I have been thoroughly instructed as to the care, adjustments, safe operation and applicable warranty policy.

Date _____

Owner's Signature _____

PLEASE EMAIL TO BUFFALO TURBINE AT - service@buffaloturbine.com

Or fax to 716 592 2460

4.0 OPERATIONS

4.1 TO THE NEW OPERATOR OR OWNER

Buffalo Turbine Monsoon are designed to spray a fine mist of water particles to control dust. The material is conveyed on a stream of high volume and velocity of air and water to remove it from the area of concern.

Many of the features incorporated into the machine are the result of suggestions made by customers like you. Read the manual carefully to learn to operate the machine safely and how to set it to provide maximum efficiency. The manual will take you step-by-step through your working day. By following the operating instructions in conjunction with a good maintenance program, your Blower will provide many years of trouble-free service

Potential Mechanical Hazards while operating your machine:

Never operate the debris blower around others to prevent the possibility of being run over by equipment.
Never ride on your debris blower to prevent the possibility of being thrown off the machine or hurt severely.

Potential Crushing Hazards while operating your machine:

Between Trailer Tongue and mounting hitch on towing vehicle



WARNING:

This Product can expose you to chemicals including carbon monoxide and benzene, which are known to the State of California to cause cancer and birth defects or other reproductive harm.

For more information go to www.P65Warnings.ca.gov.

4.2 BREAK-IN

Although there are no operational restrictions on the Blower when it is used for the first time, it is recommended that the following mechanical items be checked:

A. Operating for first ½ hour

1. Re-torque all wheel bolts, axle nuts and trailer mounting bolts and nuts.
2. Re-torque all other fasteners and hardware.
3. Check set screw (nozzle pulley) to ensure it tightened.

B. Operating for first 5 hours

1. Re-torque all hardware and fasteners.
2. Check set screw (nozzle pulley) to ensure it tightened.
3. Go to the normal servicing and maintenance schedule as defined in the Maintenance Section of the manual.

4.3 PRE-OPERATION CHECKS

Efficient and safe operation of the Buffalo Turbine Blower requires that each operator reads and understands the operating procedures and all related safety precautions outlined in this section. A pre-operation checklist is provided for the operator. It is important for both personal safety and maintaining the good mechanical condition of the machine that this checklist is followed.

BATTERY MUST BE CONNECTED BEFORE OPERATION (DISCONNECTED FOR SHIPPING).

Before Operating the Blower and each time thereafter, the following areas should be checked off.

1. For fuel, oil, and operating information of the Kohler Engine, refer to the Manufacturers specs included with this manual.
2. The Model KB turf trailer is not designed for highway towing. For highway use or speeds above 15mph (24kph) an optional DOT approved trailer must be used.
3. Insure the Blower unit is attached to a proper receiver mounted on the towing vehicle. A pin hitch receptacle is standard with the model KB. Attach the KB trailer using the proper size hitch pin with a locking presto pin.
4. Make sure all guards and shields are in place, secured and functioning as designed.
5. Check that all clamp bands are secure.
6. Check the belts and pulleys for proper tension and alignment.

Remote Nozzle and Throttle Control

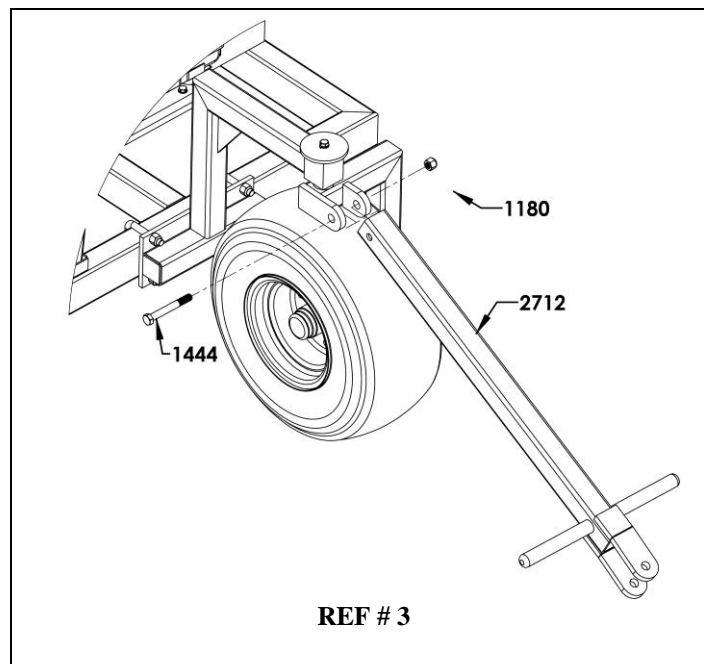
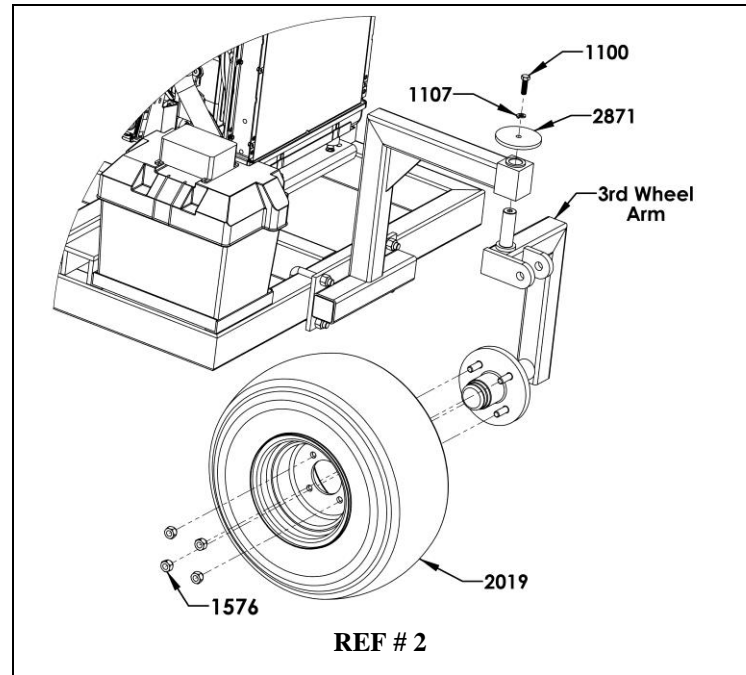
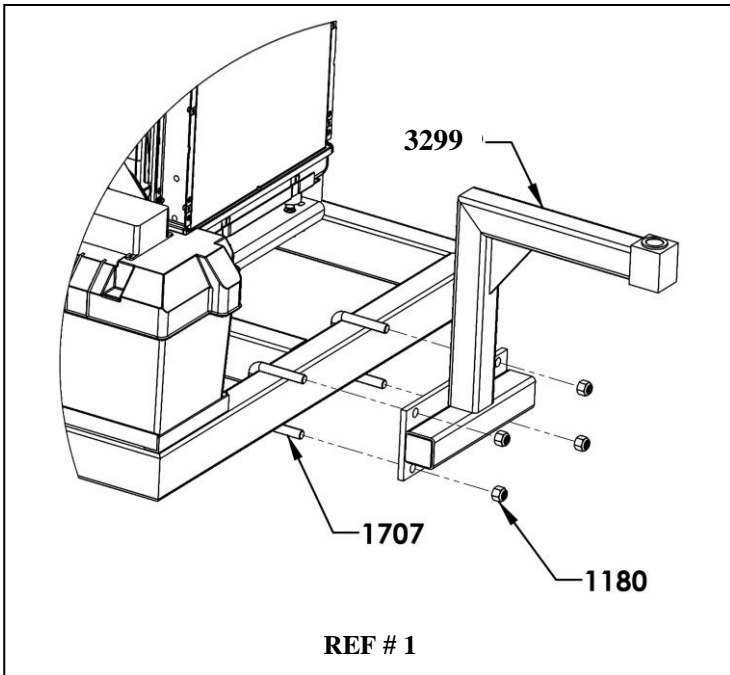
(REFERENCE PAGES 25-31 FOR WIRELESS REMOTE INSTRUCTIONS)

The throttle control adjusts the engine RPM from an idle to maximum RPM and the nozzle control adjusts the rotation of the nozzle assembly (360° in either direction).

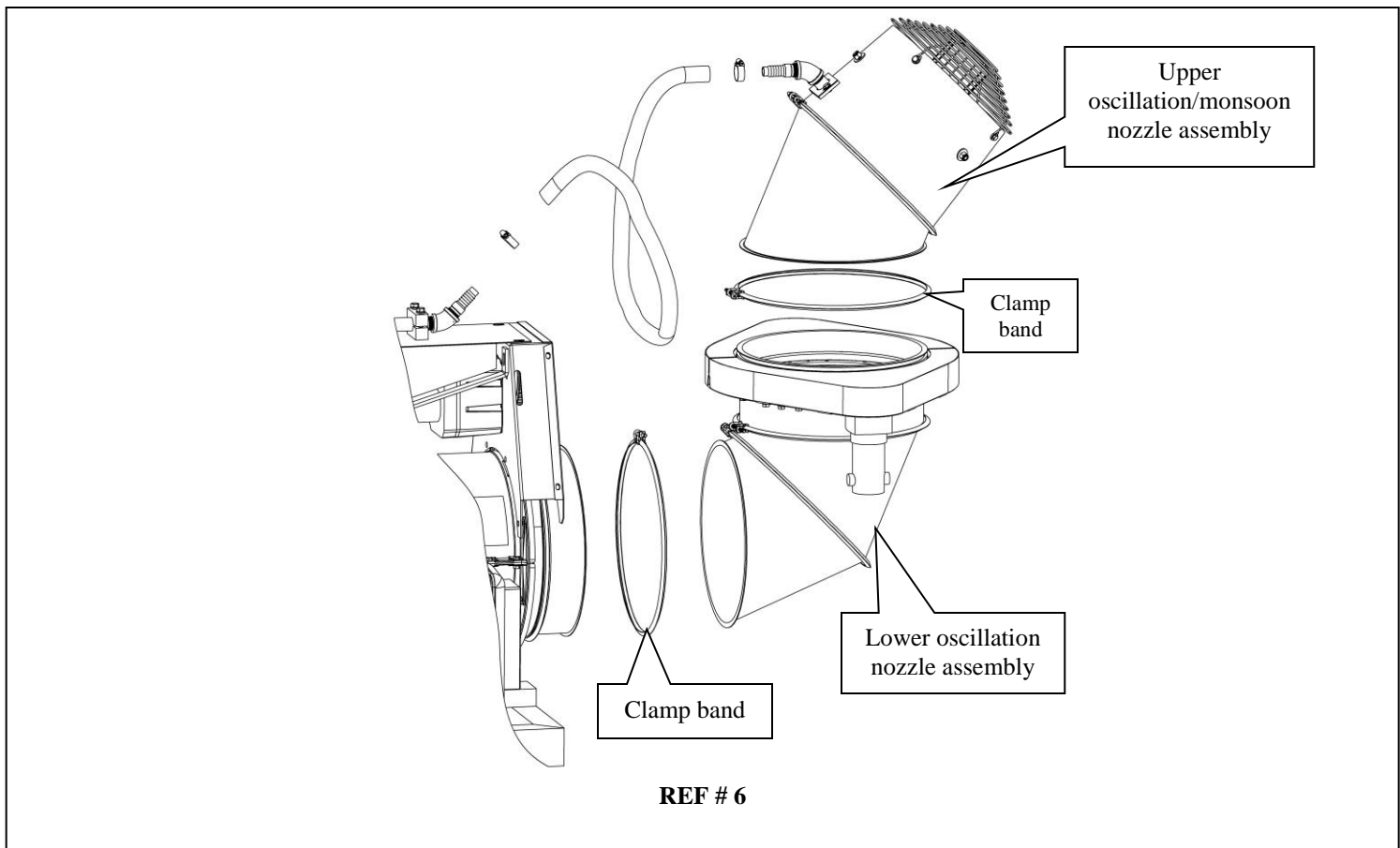
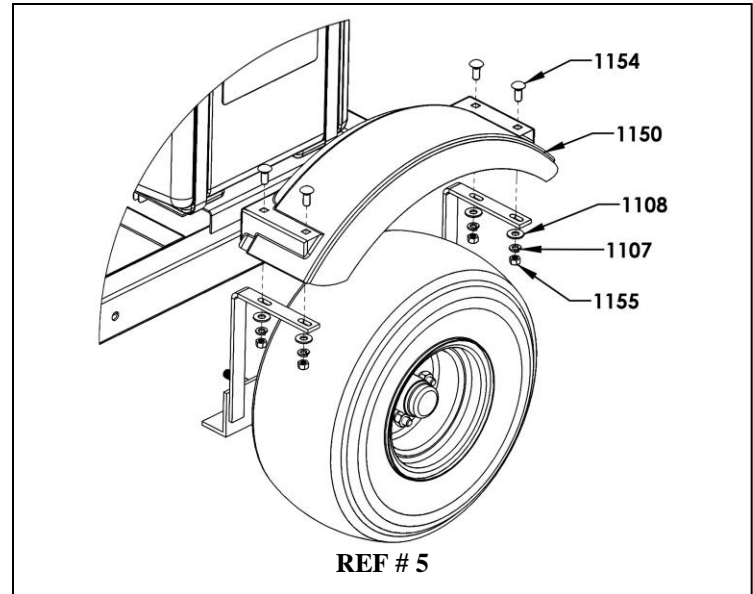
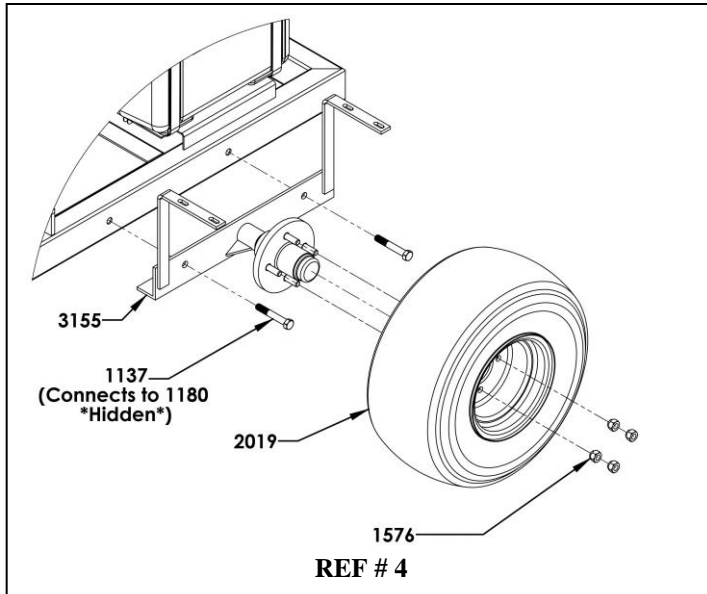
CAUTION ! DO NOT ALLOW LEAVES OR DEBRIS TO ACCUMULATE ON OR NEAR THE ENGINE OR EXHAUST SYSTEM OF THE MODEL KB BLOWER, TRACTOR ENGINE OR ANY INTERNAL COMBUSTION ENGINE.

4.4 MODEL BT-MDC2 Assembly Instructions

1. Fill engine oil to proper level. (overseas shipments)
2. (See Ref # 1) Attach 3rd Wheel bracket (**part# 3299**) with 2 U-bolts each (**part# 1707 and part #1180**). Center (Part # 3299) with the center frame support. Tighten Nyloc nuts (**part # 1180**)
3. Attach 3rd Wheel Arm to 3rd Wheel Bracket (See Ref # 2) using (**part # 1100 / 1107 / 2871**)
4. (See Ref # 2) Install Tire (**part # 2019**) with lug nuts (**part # 1576**). **Torque lug nuts to 80 Ft/Lbs**
5. Attach Tow Bar/Handle (**part # 2712**) using the bolt (**part # 1444**) and nyloc nut (**part # 1180**). Tighten at this time.



6. Attach 2 axle weldments (**part# 3155**) with 2 bolts/nuts each (**part# 1137/1180**). Torque to 45-50 Ft/Lbs. **NEVER USE AN IMPACT GUN TO TIGHTEN NUTS / BOLTS!** (SEE REF#4)
7. Install Tire (**part # 2019**) with lug nuts (**part # 1576**). Torque lug nuts to **80 Ft/Lbs** (SEE REF #4)
8. Attach both fenders (**part # 1150**) using (4) 3/8-16 x 1" carriage bolts (**part # 1154**), (4) 3/8 Flat Washer (1108), (4) 3/8 lock washer (1107) and 3/8-16 hex nuts (**1155**) (SEE REF # 5)
9. Recheck all mounting bolts to assure that they are tight.
10. Attach lower oscillation nozzle assembly (SEE REF # 6) to elbow base ring.
11. Attach upper oscillation / monsoon nozzle (SEE REF # 6) to lower oscillation nozzle assembly
12. Connect water hoses
13. Reattach positive battery cable (RED) and ground cable (Black) to proper terminals.



4.5 FIELD OPERATION

1. Do not direct monsoon towards people, pets, autos, windows, etc.
2. **Starting monsoon unit:** Always start engine at a lower engine speed with nozzle pointed down or away.
3. The air stream direction is changed (in either direction) by pressing the nozzle buttons on the transmitter. The nozzle will stop turning by releasing the transmitter button. ALWAYS CHECK THE GROUND CLEARANCE WHEN OPERATING THE NOZZLE IN THE DOWN VERTICAL POSITION.
4. **Stopping monsoon unit:** Shut engine off above ½ throttle by turning key switch to off position to avoid engine backfire.
5. Allow the blower fan speed to come to a complete stop before disconnecting from tow vehicle.
6. MUST CLEAN RADIATOR GUARD REGULARLY

4.6 Operating RPM (All Models)

The manufacturer's engine section normally recommends the unit be run at a RPM that will insure efficient operation. The Monsoon can operate at a slower RPM. Increase engine RPM as needed. Always try to blow with the wind.

4.7 Storage

At the end of the working season or before storing the monsoon unit, prepare the machine by following this procedure:

1. Select a storage area that is dry, level and free of debris.
2. Thoroughly wash the machine with a water hose to remove all debris and residue. DO NOT PRESSURE WASH
3. Run the machine at low RPM to dry the Blower Components.
4. Touch up all paint chips and scratches to prevent rusting.
5. Inspect for worn or failed components. Order the replacement parts and repair the monsoon unit when time allows. This will eliminate unnecessary down time at the start of next season.
6. Store in an enclosed building. If space is not available, cover with a waterproof tarpaulin and tie it down securely.
7. Store the machine away from areas of human activity.
8. Do not allow children to play around the stored unit.

5.0 TROUBLE SHOOTING

The Buffalo Turbine Monsoon uses a high volume and velocity of air to move material from one place to another. The system is simple and reliable requiring minimal maintenance.

If you encounter a problem that is difficult to solve, even after reading through this trouble shooting section, please call your local dealer or distributor. **Before calling, please have this Operator's Manual and the serial number from your Blower ready.**

In the following section, we have listed causes and solutions to the problems that you may have encountered. **TURN OFF ENGINE, REMOVE KEY, AND DISCONNECT BATTERY BEFORE SERVICING BLOWER UNITS. INSTALL GUARDS BEFORE OPERATING.**

| PROBLEM | CAUSE | SOLUTION |
|------------------------------------|---|--|
| No air flow | Buildup of debris inside turbine | Remove nozzle and clean debris from inside turbine |
| | Broken coupling (KB Series) | Replace coupling |
| No air flow | Blower fan not turning | See solutions above |
| Reduced or no air flow | Blower fan turns | Air intake or exhaust restricted Shut off engine Blower or tractor – remove restrictions Debris cannot be allowed to build up between the blower fan and stationary vanes |
| Machine vibrates or Unusual sounds | Bearing or coupling failure Out-of-balance | Replace bearings or coupling Have your dealer check blower for damaged blades. Wash and clean blower fan blades |
| No throttle control | | See diagnostic tests on pages 29-30 |
| No nozzle control | | See diagnostic tests on pages 31-32 |

6.0 Machine Specifications

Model MDC2 Series

| | |
|---------------------------|--|
| Length: | 136.5" with wheels and handle 104.5" with wheels and handle (turned to side for transport) 88" with wheels and handle removed |
| Width: | 55" with wheels 36.5" without wheels |
| Height: | 54"with wheels 46" without wheels |
| Weight: | 975 lbs |
| Electrical System: | 12 Volt battery / 575 CCA |
| Fuel Capacity: | 12 gallon Diesel Fuel only |
| Input Power: | KDW1003 Kohler Engine |
| Input RPM: | Up to 3600 RPM |
| Outlet Size: | Approximately 12" |

7.0 MAINTENANCE SECTION

7.1 Maintenance Safety

1. Set Blower on a level surface, stop engine, set park brake, remove ignition key and wait for all moving parts to stop before dismounting to service, adjust or repair.
2. Reinstall and secure all guards removed for servicing before starting to use machine again. *We recommend wearing gloves when removing or installing the guard to avoid getting cut*
3. Securely support machine with blocks or safety stands when changing tires or working beneath it.

7.2 Fluids

Change oil per Manufacturer's specification (see Engine owner's manual section).
A Teflon spray type lubricant on the nozzle base and slides provides for freer rotation.

7.3 SERVICE CHECKLIST

See Lubrication and Maintenance sections for details of service. Copy this page to continue record.

TURN OFF ENGINE, REMOVE KEY & DISCONNECT BATTERY BEFORE SERVICING BLOWER UNIT

CODE: LUBRICATE-(L) / CHECK-(*) / CHANGE-(C) / REPLACE-(B) / CLEAN-(CL)

SCHEDULED MAINTENANCE HOURS _____

SERVICED BY _____

MAINTENANCE

8 hrs or daily

- (*) Remove all debris that has settled between the blower wheel fan and the stationary vanes. Helps maintain peak performance.
- (*) Check engine oil and fill to proper level – Do not overfill
- (*) Check air filter and precleaner
- (CL) Clean debris from air intake and other cooling areas on the engine
- (*) Check tire pressure (Max. 50 PSI)
- (*) Check Clamp Band Bolt for tightness

40 hours or weekly

- (*) Check condition of coupling (center section # 1256) connecting bolts and nuts during each oil change or when experiencing vibration or unusual noises. (See page 15)
- (*) Inspect battery terminals for any corrosion, broken wires, or loose connections.
- (*) Remove Battery and clean debris from inside of battery box
- (L) Nozzle base slides (Teflon or Silicone spray)
- (*) Check set screw (nozzle pulley) to ensure it is tightened
- (*) Wash and Clean any dirt or grime build up that has accumulated on blower wheel fan blades. Helps to minimize vibration balance and maintain peak performance.

200hrs or annually

- (CL) Machine

DO NOT OPERATE BLOWER UNIT WITHOUT GUARDS SECURELY ATTACHED

*Debris Blowers, Vector Sprayers, Dusters
and Dust Control Systems*

Declaration of Conformity

According to EC Machinery Directive 2006/42/EC, Annex II B

We, Buffalo Turbine of Springville, New York, USA herewith declare, that the following described machine/machinery part is to be incorporated into a(n) machine/assembly with other machinery to make one machine and that its setting into operation is prohibited unless the machine, which shall be incorporated into the lower mentioned, complies with the requirement of the EC Machinery Directive 2006/42/EC.

Product: Engine Monsoon

Type: BT-MDC2

Serial Number:

Order Number:

Applicable EC Directives: Machinery Directive 2006/42/EC
Noise Emissions Directive 2000/14/EC +
Amendment 2005/88/EC

Applicable Harmonized Standards: BSENISO 12100:2010
ISO 3744:2010
ISO 11094:1991

With a measured sound power level of:

Lwa 120 dB

With a guaranteed sound power level of:

Lwa 123dB

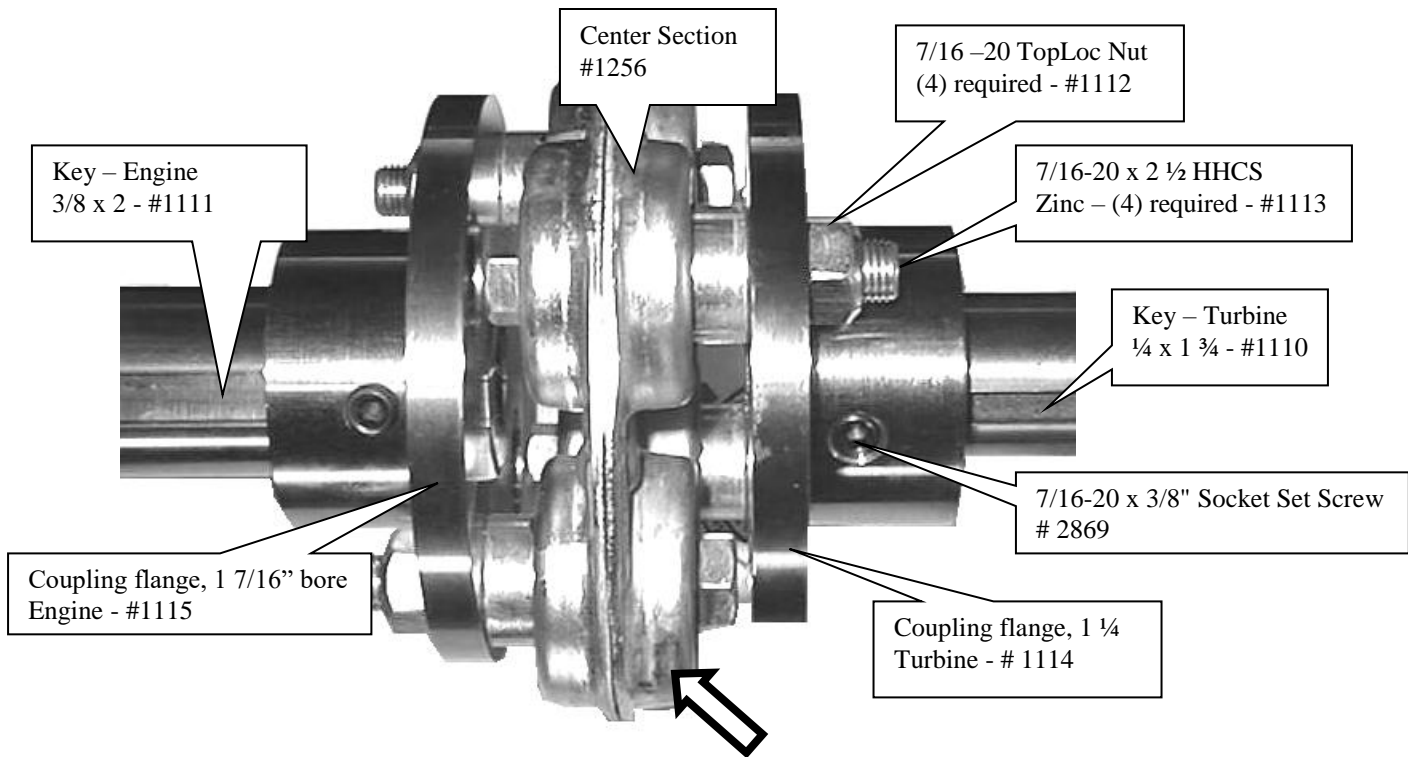
INSTALLATION INSTRUCTIONS & PARTS FOR THE MOREFLEX COUPLING

PART # 1746 – COUPLING COMPLETE, KOHLER ENGINE

Includes PN 1110(1pc), 1111(1pc), 1112(4pc), 1113(4pc), 1114(1pc), 1115(1pc), 1256(1pc), 2869(4pc)

ALIGNMENT OF TURBINE SHAFT WITH SHAFT OF ENGINE IS CRITICAL

1. Install keys in both shafts.
2. Slide coupling flanges on both shafts (engine and turbine shafts)
3. Place Morflex coupling CENTER SECTION between coupling flanges and secure with 4 bolts and TOPLOC nuts. The bolt heads are positioned against the coupling in alternating directions. Tighten all 4 bolts. DO NOT TIGHTEN SET SCREWS AT THIS TIME.
4. Check key for proper position under the set screw hole on both shafts.
5. Place several drops of Loctite 271 into these two holes only. Set screws and tapped screw holes must be free of dirt and oil for Loctite to work properly.
6. Install the set screws over the keys and tighten firmly.
7. Using a drill point, dimple each shaft through the other 2 set screw holes. Clean drill chips, oil and dirt before applying Loctite.
8. Place several drops of Loctite 271 in these 2 holes.
9. Install and tighten set screws in these 2 holes.
10. Check and retighten the 4 bolts that hold the coupling center section in place.
11. Visually inspect the unit and replace the guard. DO NOT OPERATE WITHOUT THE GUARDS IN PLACE.

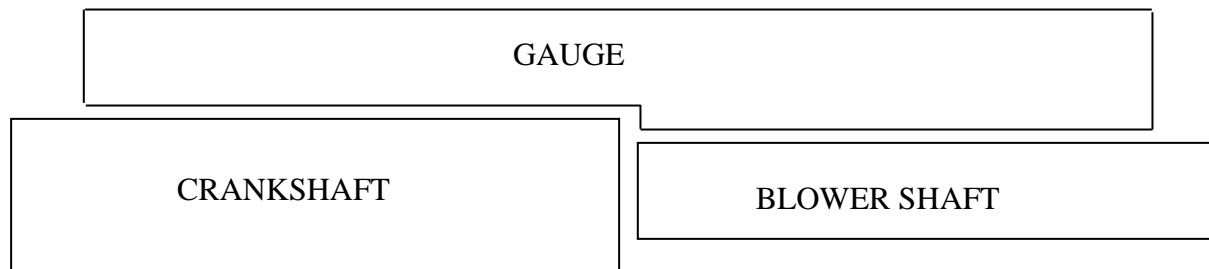


Part # 1256 (center section) is a **“WEAR”** item that should be visually checked each time the engine oil is changed. This coupling is equipped with special lock nuts. Occasionally check that all 4 nuts are securely fastened. **LOOK FOR CRACKS IN THE RUBBER COMPOSITION THAT SURROUNDS THE 4 BUSHINGS. Replace the center section when the rubber composition begins to show ANY signs of cracking OR an increase in vibration OR unusual sounds. When in doubt, call our Service Department.**

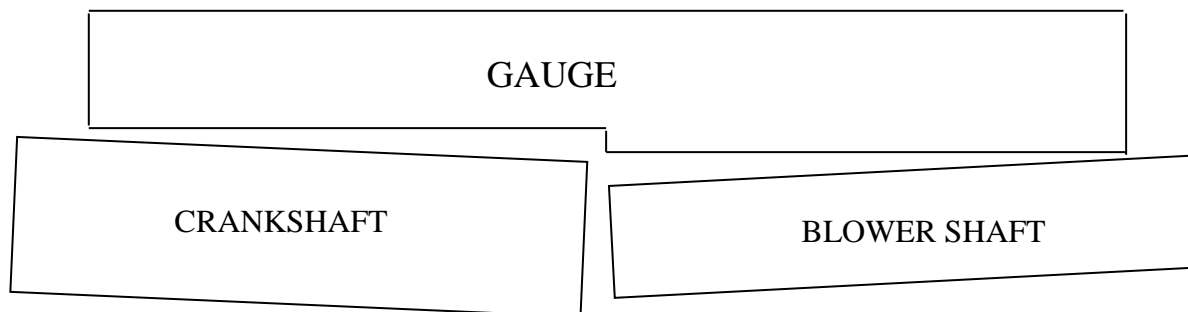
MOUNTING BLOWER ASSEMBLY ONTO FRAME **AND ALIGNMENT RECOMMENDATIONS**

1. Install blower assembly onto frame and tighten all of the bolts.
2. Remove all burrs and oil from the shafts and keyways (engine and blower shafts).
3. Using the supplied gauge, align the shafts parallel to each other (very important).
4. Check in four places around the shafts at 90° to each other.
5. When properly aligned, gauge should have little to no gap between itself and the shafts at any point along the gauge.
6. To adjust, move the engine. The 2 mounting brackets have tapped holes in each corner to help support and adjust the position of the engine. The 4 roll pins may need to be repositioned after alignment is completed and bolts are tightened.
7. Tighten all engine bolts and recheck alignment. Drill and install 4 roll pins in new position.

ACCEPTABLE

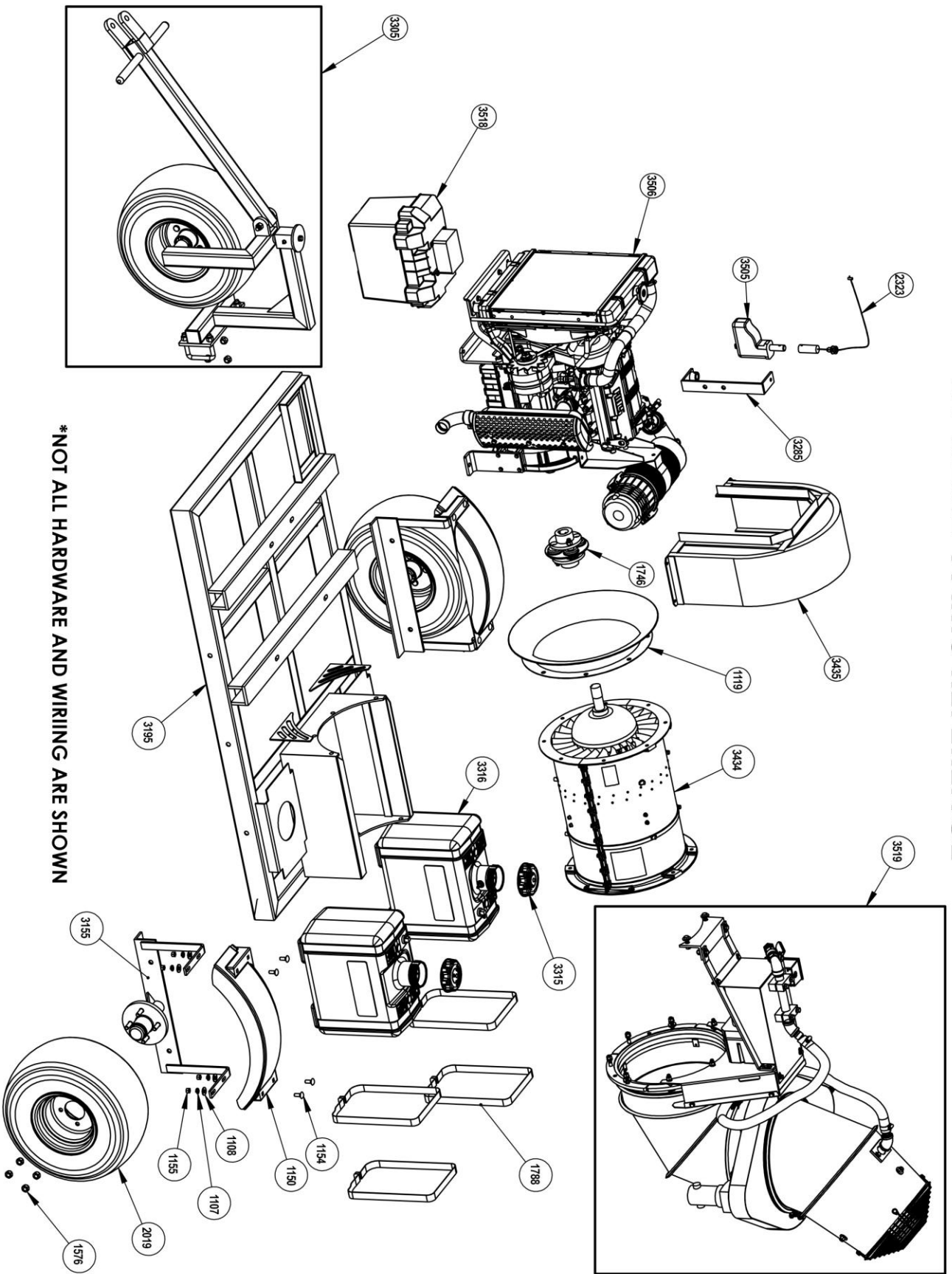


NOT ACCEPTABLE



SECURELY ATTACH GUARDS BEFORE OPERATING BLOWER UNITS

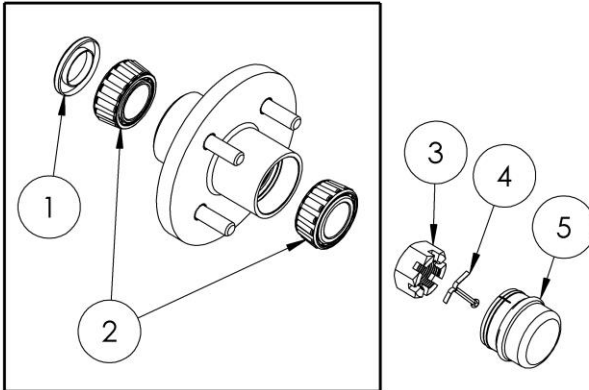
BT-MDC2 PARTS REFERENCE



*NOT ALL HARDWARE AND WIRING ARE SHOWN

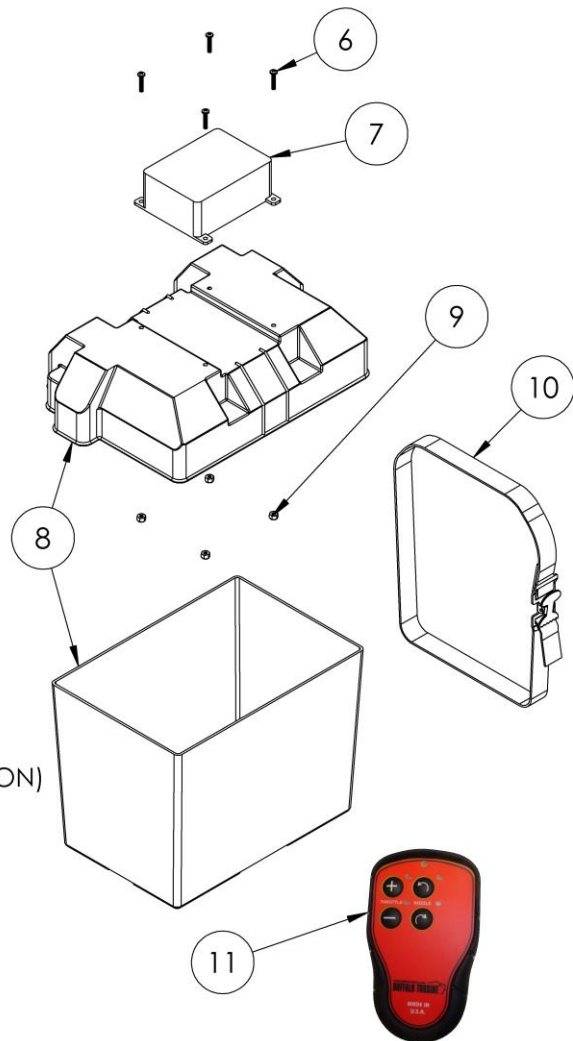
BT-MDC2 SUB ASSEMBLIES PARTS REFERENCE

PN 1153 (HUB W/ STUD RISERS)
REPLACEMENT PARTS



| HUB ASSEMBLY PARTS REFERENCE | | | |
|------------------------------|------|-----------------------------|--------|
| Ref # | Qty. | Description | Part # |
| 1 | 1 | SEAL | 1691 |
| 2 | 2 | 1-1/16 TAPER ROLLER BEARING | 1690 |
| 3 | 1 | 1"-14 CASTLE NUT | 1151 |
| 4 | 1 | 1/8 X 1-1/2" COTTER PIN | 1152 |
| 5 | 1 | BEARING CAP | 1575 |

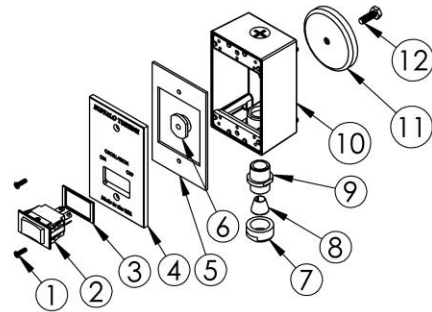
| 3518 BATTERY BOX PARTS REFERENCE | | | |
|----------------------------------|------|-------------------------------|--------|
| Ref # | Qty. | Description | Part # |
| 6 | 4 | 8-32 X 7/8" PHILLIPS PAN HEAD | 2306 |
| 7 | 1 | UNIVERSAL WIRELESS RECEIVER | 3239 |
| 8 | 1 | LARGE BATTERY BOX | 2259 |
| 9 | 4 | 8-32 NYLOC NUT | 2329 |
| 10 | 1 | BATTERY BOX STRAP | 3238 |
| 11 | 1 | WIRELESS TRANSMITTER | 3024 |



NOTE: NOT SHOWN:
PART NO: 3512 - WIRING HARNESS, DIESEL (MONSON)
QTY=1
PART NO: 2076 - 16/14 FEMALE QUICK DIS.
QTY=1

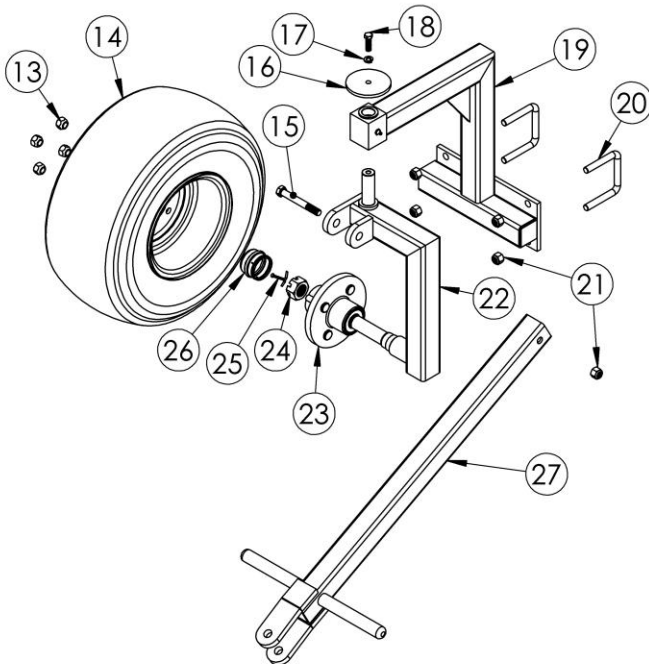
BT-MDC2 SUB ASSEMBLIES PARTS REFERENCE CONT.

| PART # 3500 : OSCILLATION CONTROL BOX | | | |
|---------------------------------------|------|--|--------|
| Ref # | Qty. | Description | Part # |
| 1 | 2 | 6-32 PHILLIPS SCREW 1" LONG SS FLAT HEAD | 1310 |
| 2 | 1 | ROCKER SWITCH | 1786 |
| 3 | 1 | SEAL, ROCKER SWITCH | 4013 |
| 4 | 1 | CONTROL BOX COVER 12V OSCILLATION | 2945 |
| 5 | 1 | SEAL, CONTROL BOX COVER | 4014 |
| 6 | 1 | 1/4-20 NUT PLATE | 1302 |
| 7 | 1 | 2 AND 4 WIRE NUT | 1286 |
| 8 | 1 | 4 WIRE BUSHING | 1303 |
| 9 | 1 | BOX FITTING | 1295 |
| 10 | 1 | CONTROL BOX HOUSING | 1281 |
| 11 | 1 | MAGNET | 1300 |
| 12 | 1 | 1/4-20 X 3/4 HHCS | 1258 |

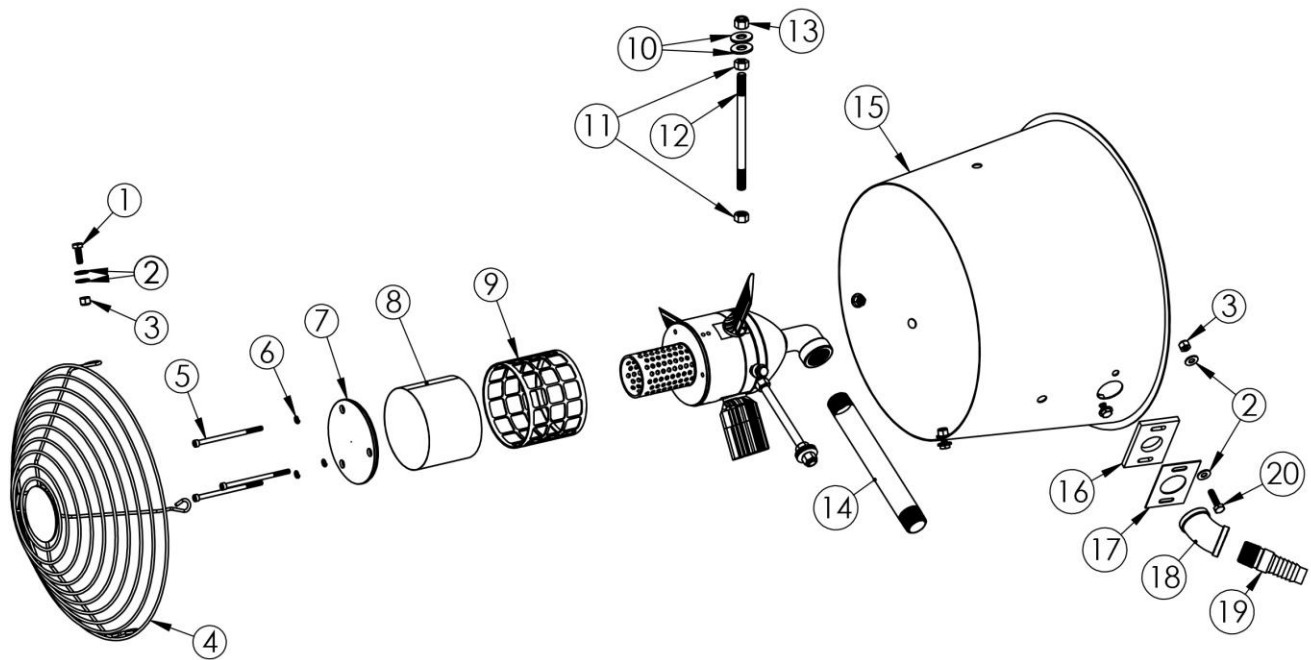


NOTE: NOT SHOWN BUT INCLUDED WITH PART #3500

| Part # | Description | Qty. |
|--------|--|---------|
| 1177 | 1/4 BLACK HEAT SHRINK | 12 in. |
| 1178 | 3/8 BLACK HEAT SHRINK | 24 in. |
| 1282 | QUICK CONNECT FLAG TERMINAL | 4 |
| 1283 | BUTT CONNECTOR | 5 |
| 1293 | FUSE HOLDER | 1 |
| 1294 | 20 AMP FUSE | 1 |
| 1305 | 16/4 SJO WIRE | 30 in. |
| 1537 | 16-2 SJOOW CORD | 102 in. |
| 1838 | 1/2 HEAT SHRINK | 3 in. |
| 2084 | 11172-03, CONNECTOR PLUG, 2 POLE | 1 |
| 2085 | 11172-02, CONNECTOR PLUG, 2 POLE | 1 |
| 3427 | 2-WAY WEATHER PACK CONNECTOR, FEMALE | 1 |
| 3429 | 16-14 GA. FEMALE WEATHER PACK TERMINAL | 2 |
| 3431 | GREEN CAVITY SEAL | 2 |
| 3431 | GREEN CAVITY SEAL | 2 |
| 3449 | RING TERMINAL | 2 |



| PART # 3305 : 3RD WHEEL ASSEMBLY | | | |
|----------------------------------|------|--|--------|
| Ref # | Qty. | Description | Part # |
| 13 | 4 | 1/2-20 LUG NUT | 1576 |
| 14 | 1 | 18" X 8 1/2" X 8" 4PLY SAWTOOTH TIRE | 2019 |
| 15 | 1 | 1/2-13 X 4 HHCS GR. 5 ZINC PLATED | 1444 |
| 16 | 1 | 3-1/2" OD WASHER, OSCILLATION TRAILER | 2871 |
| 17 | 1 | 3/8 LOCK WASHER ZINC PLATED | 1107 |
| 18 | 1 | 3/8-24 X 1-1/4 HHCS ZINC GR 5 | 1100 |
| 19 | 1 | THRID WHEEL BRACKET | 3299 |
| 20 | 2 | U BOLT, 3" X 1/2" SQUARE BEND | 1707 |
| 21 | 5 | 1/2-13 NYLOC NUT ZINC | 1180 |
| 22 | 1 | WHEEL BRACKET | 2713 |
| 23 | 1 | HUB WITH STUDS,RACES, AND GREASED BEARINGS INSTALLED | 1153 |
| 24 | 1 | 1"-14 CASTLE NUT YOUR | 1151 |
| 25 | 1 | 1/8 X 1-1/2" COTTER PIN | 1152 |
| 26 | 1 | BEARING BAP FOR HUB | 1575 |
| 27 | 1 | TOW BAR / HANDLE, OS | 2712 |



Oscillation Gyrotory Atomizing Nozzle (Part #3517) Parts Reference

| Ref # | Part # | Description | Qty. |
|-------|--------|--|------|
| 1 | 1258 | 1/4-20 X 3/4 HHCS GR5 ZINC | 4 |
| 2 | 1415 | 1/4" FLAT WASHER | 12 |
| 3 | 1125 | 1/4-20 NYLOC NUT ZINC | 6 |
| 4 | 2881 | MONSOON NOZZLE GUARD | 1 |
| 5 | 2663 | 10-32 X 3 1/2" LONG STAINLESS STEEL SHCS | 3 |
| 6 | 2664 | 10-32 STAINLESS STEEL SPLIT LOCK WASHER | 3 |
| 7 | 2574 | CAGE END CAP, MONSOON | 1 |
| 8 | 2711 | SCREEN, STAINLESS MONSOON | 1 |
| 9 | 2605 | SCREEN CAGE, MONSOON ATOMIZER | 1 |
| 10 | 1108 | 3/8 FLAT WASHER ZINC PLATED | 6 |
| 11 | 1105 | 3/8-24 HEX NUT ZINC PLATED GRADE 5 | 6 |
| 12 | 2592 | 3/8" X 5.7" LONG SUPPORT ROD, MONSOON | 3 |
| 13 | 1935 | 3/8-24 NYLOC NUT | 3 |
| 14 | 2676 | 3/4" X 8" NIPPLE | 1 |
| 15 | 2665 | MONSOON NOZZLE | 1 |
| 16 | 2678 | RUBBER RETAINING GASKET, MONSOON | 1 |
| 17 | 2679 | GASKET RETAINER STAINLESS, MONSOON | 1 |
| 18 | 3516 | 45 DEGREE 3/4" GALVANIZED STEEL ELBOW | 1 |
| 19 | 3515 | BARBED HOSE FITTING, 3/4" HOSE, 3/4" MALE NPT, ZINC PLATED | 1 |
| 20 | 1169 | 1/4-20 X 1 HHCS ZINC | 2 |

**PLEASE CONTACT BUFFALO TURBINE AT 716-592-2700
BEFORE ATTEMPTING TO SERVICE GYROTORY ATOMIZING NOZZLE.**

| BILL OF MATERIALS FOR BT-MDC2 | | |
|-------------------------------|--|-----|
| PN | DESCRIPTION | QTY |
| 1100 | 3/8-24 X 1-1/4 HHCS ZINC GR 5 | 7 |
| 1101 | 3/8-24 X 1-1/2 HHCS ZINC GRADE 5 | 6 |
| 1104 | 3/8-24 X 2 HHCS ZINC GRADE 5 | 12 |
| 1105 | 3/8-24 HEX NUT ZINC PLATED GRADE 5 | 31 |
| 1106 | SPACER-3/8 X 3/16 THICK WASHER | 11 |
| 1107 | 3/8 LOCK WASHER ZINC PLATED | 30 |
| 1108 | 3/8 FLAT WASHER ZINC PLATED | 43 |
| 1110 | KEY, 1/4 X 1-1/2 | 1 |
| 1111 | KEY, 3/8 X 1-1/2 | 1 |
| 1112 | 7/16-20 TOPLOC NUT GRADE 5 ZINC | 4 |
| 1113 | 7/16-20 X 2-1/2 HHCS ZINC GRADE 5 | 4 |
| 1114 | COUPLING FLANGE 1-1/4 BORE | 1 |
| 1115 | COUPLING FLANGE 1-7/16 BORE | 1 |
| 1119 | 14-221-D1 BELLMOUTH | 1 |
| 1121 | BLACK GROUND CABLE W/ LUGS 16" LONG 4 GAGE | 1 |
| 1124 | 1/4-20 X 1-1/4 HHCS | 2 |
| 1125 | 1/4-20 NYLOC NUT ZINC | 4 |
| 1130 | 5/16-18 X 3/8 SET SCREW | 2 |
| 1137 | 1/2-13 X 3-1/4 HHCS GRADE 5 ZINC | 4 |
| 1138 | PLASTIC SLIDES | 4 |
| 1139 | 3/8 NOTCHED WASHER | 8 |
| 1150 | PLASTIC FENDER | 2 |
| 1156 | SERIAL TAG | 1 |
| 1158 | 1/4" GAS LINE | 59 |
| 1166 | COV 1/2 X 1/4 WIRE CLAMP | 4 |
| 1167 | COV 5/16 X 1/4 WIRE CLAMP | 1 |
| 1168 | SS HOSE CLAMP | 7 |
| 1169 | 1/4-20 X 1 HHCS ZINC | 8 |
| 1171 | ELBOW SEGMENT | 1 |
| 1173 | CLAMP BAND W/ BOLT & NUT | 2 |
| 1180 | 1/2-13 NYLOC NUT ZINC | 9 |
| 1182 | 4 X 4 BT DECAL | 2 |
| 1184 | WARNING - EYE PROTECTION DECAL | 1 |
| 1185 | WARNING - EAR PROTECTION DECAL | 1 |
| 1256 | MOREFLEX CENTER SECTION | 1 |
| 1258 | 1/4-20 X 1/4 HHCS | 12 |
| 1259 | 1/4 LOCKWASHER | 18 |
| 1415 | 1/4" FLAT WASHER | 34 |
| 1444 | 1/2-13 X 4 HHCS | 1 |
| 1540 | 5/16 LOCK WASHER | 38 |
| 1575 | BEARING CAP FOR HUB | 1 |
| 1576 | 1/2-20 LUG NUT | 12 |
| 1707 | U-BOLT | 2 |
| 4260 | 3/4" GOODYEAR ORTAC HOSE | 64 |
| 1772 | 6 GALLON FUEL TANK | 1 |
| 1788 | GAS TANK STRAP | 4 |
| 1804 | 3/8 X 3/4 44 TOOTH TIMING BELT PULLEY | 1 |
| 1805 | 3/8 X 1/4 TIMING BELT 60 TOOTH | 1 |
| 1813 | 10/32 NYLOC LOCK NUT | 4 |
| 1980 | 1/4-20 X 1/2" LONG SOCKET SET SCREW | 1 |
| 1996 | SUPPORT MOUNT FOR BRACES | 1 |
| 2019 | 18" X 8 1/2" X 8" 4PLY SAWTOOTH TIRE ON 8X7, 4-4 WHITE RIM | 3 |
| 2275 | 79AH SEALED BATTERY, 8A24 | 1 |
| 2303 | 2" SLIDE ACTUATOR | 1 |
| 2320 | 40" RED BATTERY CABLE | 1 |
| 2323 | THROTTLE CABLE ASSEMBLY | 1 |
| 2712 | TOW BAR / HANDLE, OS | 1 |
| 2713 | WHEEL BRACKET, OS | 1 |
| 2869 | 7/16-20 X 3/8" SOCKET SET SCREW | 4 |
| 2874 | RUBBER WHEEL CHOCK | 2 |
| 3141 | BELT GUARD FRONT, MEGA | 1 |
| 3142 | BELT GUARD BACK, MEGA | 1 |
| 3155 | STUB AXLE/HUB ASSEMBLY, MEGA | 2 |
| 3181 | MONSOON DECAL | 1 |
| 3195 | FRAME, BT-D1003 | 1 |
| 3285 | ACTUATOR BRACKET, LIQUID COOLED DIESEL | 1 |
| 3434 | RH BLOWER ASSEMBLY | 1 |
| 3435 | GUARD | 1 |
| 3500 | CONTROL BOX, OSCILLATION MONSOON | 1 |
| 3504 | LARGE RUBBER DIPPED MOTOR W/BRAKE, OSCILLATION | 1 |
| 3517 | GYRATORY ATOMIZING NOZZLE | 1 |
| 3668 | DIESEL FUEL CAP, GREEN | 2 |
| 3730 | GEAR MOTOR MOUNT BRACE | 2 |
| 3828 | 6 GALLON FUEL TANK, D1003M (3 FITTINGS) | 1 |
| 3832 | MUFFLER GUARD, DIESEL | 1 |
| 3890 | D1003 DIESEL ENGINE | 1 |

BUFFALO TURBINE WIRELESS REMOTE SYSTEM MANUAL FOR BT-MDC2

Specifications:

Receiver

(BT PN 3239) WIRELESS RECEIVER

Transmitter

(BT PN 3024) WIRELESS TRANSMITTER 4 BUTTON

Environmental

Supply Voltage: 12VDC

Signal Analog Voltage Ramp (V/Sec): 10/6

Signal Analog Ramp Range (V): 0-10 increase & 10 - 0 decrease

Functional Relays: functional relays makes/ breaks 8A ACI

Transmit Frequency: 2405-2480 MHz.

Number of Freq. Channels: 16

IP Class: IP65

Battery Type: 3 x 1.5 V - AAA alkaline

Operating Time: Approx. 15 h. with continuous usage

Operation

Operation of the controlled device is performed with the Nozzle and Throttle buttons on the transmitter. The Nozzle buttons are used to rotate the Nozzle clock (⌚) wise or counter clock wise (⌚). The Throttle buttons (+) increase and (-) decrease the engines throttle.

- Analog Signal Ramp Range (DCV): 0 to 10 increase (+) / 10 to 0 decrease (-)
- Releasing the + or - buttons at any time during an increase/decrease command will result in the control voltage to remain at a proportional value between 0 and 10 volts.
- At any time the operator can press both + and - buttons simultaneously to return the variable output to 0 volts resulting in the engine's throttle be set back to low idle.

Pairing Transmitter (TX) to Receiver (RX)

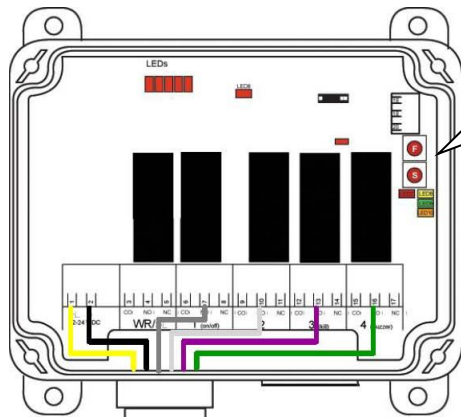
This procedure should be used to pair a single transmitter to the receiver. If you need multiple transmitters paired to this Receiver contact Buffalo Turbine at 716-592-2700 for assistance.

The following steps will completely erase any previously stored transmitter out of the receiver's memory making them obsolete. You have 10 seconds to complete these procedures after turning the engine key switch to the run position.

1. Verify that the transmitter has a green light when each individual button is pressed.
2. Engine key switch should be in the "OFF" position.
3. Firmly press and hold transmitter buttons Throttle +, Throttle -, and Nozzle 1 CCW (⌚) simultaneously.
4. While holding down the three buttons, turn the engine key switch ON, supplying power to receiver.
5. Keep holding down these three buttons for 6-10 seconds in which time the nozzle should start to move.
6. Pairing has been successfully completed.

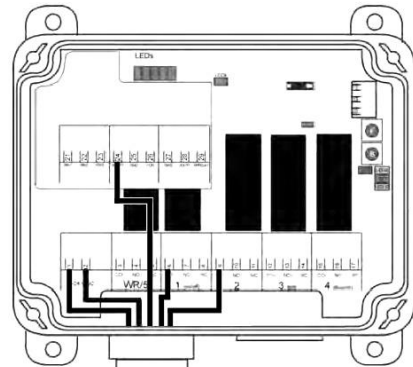
If a valid code from an already registered TX is received, the receiver will go directly into normal operating mode. This is to speed up the startup time.

NOTE: Breaking any warranty seal will void the equipment's warranty, consult with Buffalo Turbine at 716-592-2700 before proceeding.



Receiver
(Part # 3239)

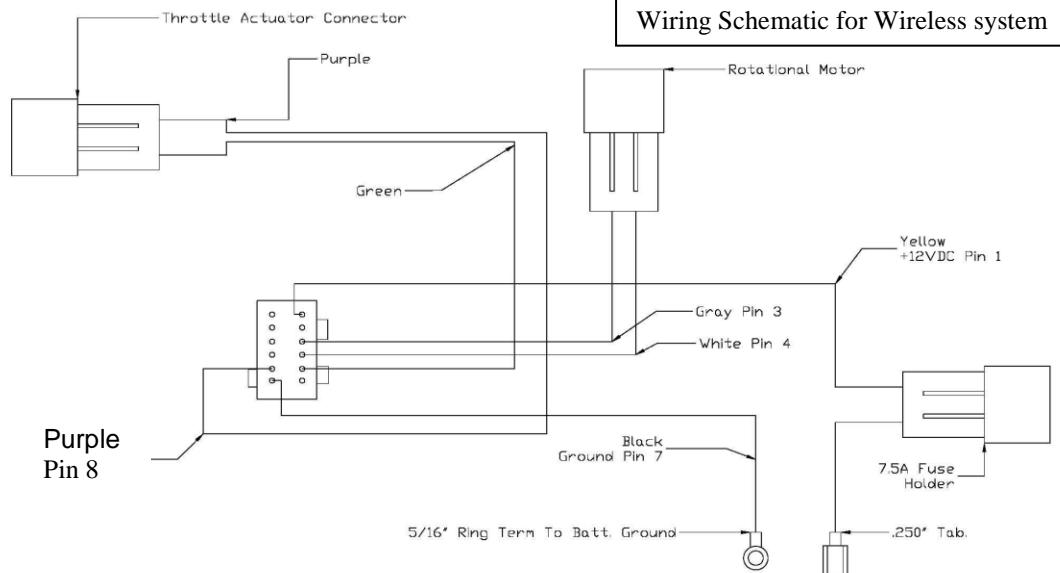
| Wire color | Function | Terminal number |
|------------|----------------|-----------------|
| Yellow | +12VDC | 1 |
| Black | -0VDC, Ground | 2 |
| Gray | Nozzle 1 | 6 |
| White | Nozzle 1 | 9 |
| Purple | Throttle Relay | 12 |
| Green | Throttle Relay | 15 |



Transmitter
Part # 3024

Future models will have all black wires sequentially numbered 1-12 and matching terminal numbers above.

Wiring Schematic for Wireless system



BATTERIES

BATTERY TYPE: 3 x 1.5 V

AAA alkaline

OPERATING TIME: Approx. 15 h. with continuous usage

WARNING! Do not recharge! Attempts to recharge may cause rupture, or the leaking of hazardous liquids which will corrode the equipment.

CHANGE THE BATTERIES

1. Remove the clip (2 screws).
2. Remove the battery cover (2 screws).
3. Remove the batteries, starting with the one in the middle.
4. Put the new batteries in (3 x 1.5V AAA batteries), starting with the battery to the left or to the right.
5. put back the battery cover (2 screws).

BATTERY PRECAUTIONS

Observe the following warnings.

- As batteries contain flammable substances such as lithium or other organic solvents, they may cause heating, rupture or ignition.
- Risk of explosion if battery is replaced with a battery of an incorrect type.
- Do not short circuit, disassemble, deform or heat batteries.
- Never try to charge a visibly damaged or frozen battery.
- Do not charge rechargeable batteries with a higher voltage than specified.
- Keep batteries out of reach of small children. Should a child swallow a battery, consult a physician immediately.
- Avoid direct soldering to batteries.
- When discarding batteries, insulate the + and - terminals of batteries with insulating/ masking tape. Do not put multiple batteries in the same plastic bag.
- When improperly disposed, lithium batteries may short circuit, causing them to become hot, burst or ignite.
- Store in a cool location. Keep batteries away from direct sunlight, high temperature, and high humidity.
- Do not throw batteries into fire.

DISPOSAL OF BATTERIES AND ELECTRONICS

An alkaline battery does not contain mercury, cadmium or lead, and is better for the environment than older types of batteries. Alkaline batteries should be disposed through local recycling stations/waste dumps. Contact your local government's recycling or solid waste department for more information on proper recycling of alkaline batteries in your region.

Improperly disposed batteries and electronics may harm public health and the environment. Batteries and electronic waste may contain toxic heavy metals. If thrown away in the trash, the toxic compounds can leach into soil and water, pollute lakes and streams, making them unfit for drinking, swimming, fishing, and wildlife. Contact your local government's recycling or solid waste department for more information on proper disposal of batteries and electronics in your region.

GUARANTEE, SERVICE, REPAIRS AND MAINTENANCE FOR WIRELESS SYSTEM

Buffalo Turbine products are covered by a guarantee against material, construction and manufacturing faults. During the guarantee period, Buffalo Turbine may replace the product or faulty parts. Work under guarantee must be authorized by Buffalo Turbine.

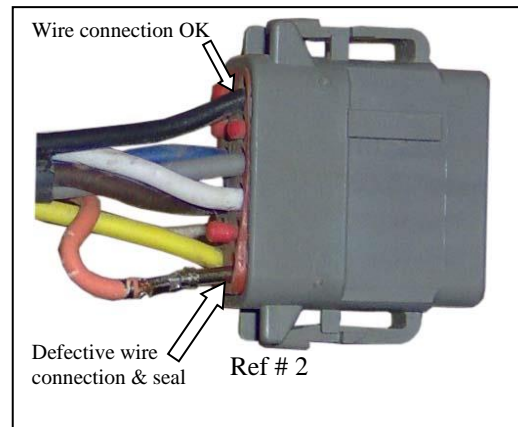
The following is not covered by the guarantee: Faults resulting from normal wear and tear, parts of a consumable nature, any Product that has been subject to unauthorized modifications, a faults resulting from incorrect installation or use, and any failure due to damp and/or water damage.

Repairs and maintenance must be authorized by Buffalo Turbine. Use spare parts from Buffalo Turbine only. Contact Buffalo Turbine at 716-592-2700 if you require service or other assistance. Keep the product in a dry, clean place. Keep contacts and antennas clean. Wipe off dust using a slightly damp, clean cloth. Never use cleaning solutions or high-pressure water.

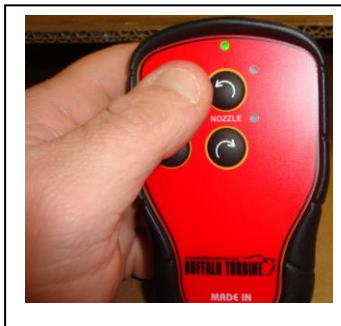
Troubleshooting For MDC2 Remote / Receiver

Symptom – Does not throttle up properly.

1. Disconnect grey plug connected to the receiver. Grey plug must be removed by compressing the side tabs and pulling straight out as shown in Ref #1. Check to ensure that each wire is securely attached to the grey connector plug (see Ref #2). Ref # 2 shows a defective grey plug.
 - If wires will not pull out of the grey connector plug, reattach connector plug to the receiver and proceed to step 2.
 - If wire(s) pull out of connector plug, wire harness needs to be replaced.(see ref # 2)



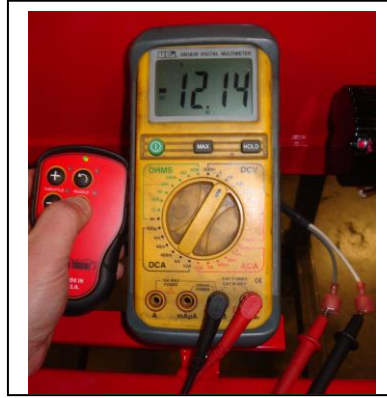
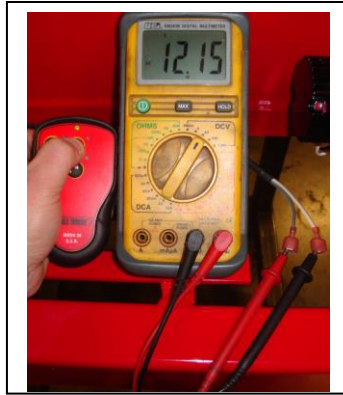
2. Check Remote Transmitter by pressing each button to ensure that the light on Transmitter has a green light.



- If the LED lights do not appear when pressing each button on the transmitter, replace transmitter batteries. If the LED lights still fail to function after replacing the batteries, replace the transmitter.
- If the lights functions correctly, proceed to step #3

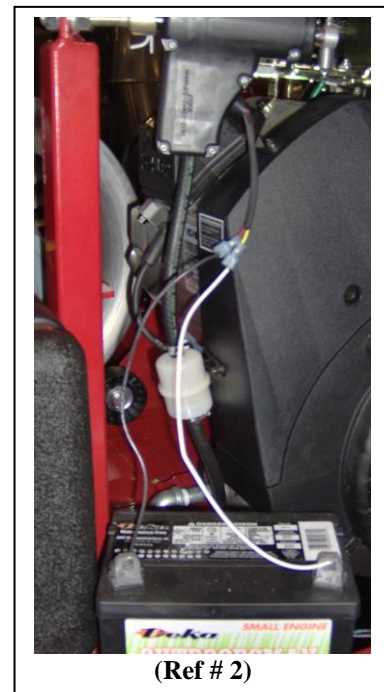
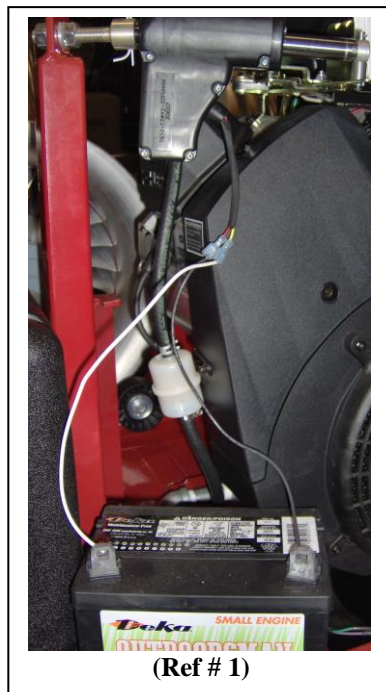
3. With engine key switch in the run position (do not start the engine at this time), disconnect throttle wires (purple and green) between throttle actuator and wire harness at the quick disconnects. The following test will require an electronic multimeter, set to read at least 12 volts.

- Insert the red probe into the purple wire and black probe into the green wire. Press the throttle buttons up and down. (Voltage should read approx. +12 volts in one direction and approx. – 12 volts in the opposite direction.) If the proper voltage is confirmed and all wire connections are secure, the throttle actuator may need to be replaced, proceed to Step 4.



- If proper voltage has not been verified contact Buffalo Turbine for further instructions.

4. The engine should be off for the following tests. Apply power to the throttle actuator directly. Both wires from the throttle actuator need to be connected to the battery (see ref # 1). (ex. yellow wire to positive terminal and red wire to negative terminal) Then the wires need to be reversed on the battery (see ref # 2). (ex. yellow wire to negative terminal and red wire to negative terminal.)



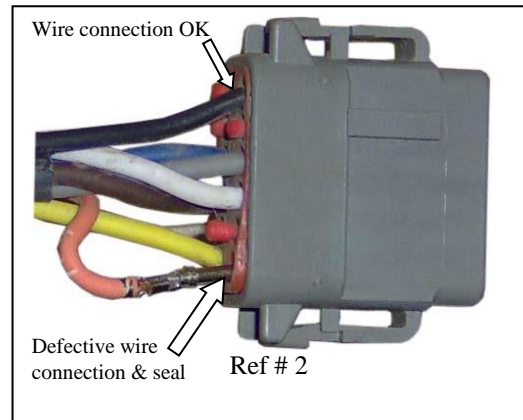
- If the throttle actuator works properly, contact Buffalo Turbine for further instructions.
- If the throttle actuator will not move in one or both directions, the throttle actuator may need to be replaced.

If necessary, contact Buffalo Turbine at 716-592-2700 for more instructions.

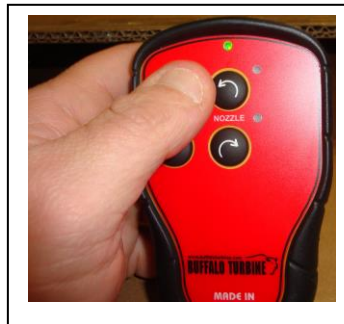
Troubleshooting For MDC2 Remote / Receiver

Symptom: Nozzle will not rotate properly.

1. Disconnect grey plug connected to the receiver. Grey plug must be removed by compressing the side tabs and pulling straight out as shown in Ref #1. Check to ensure that each wire is securely attached to the grey connector plug (see Ref #2). Ref # 2 shows a defective grey plug.
 - If wires will not pull out of the grey connector plug, reattach connector plug to the receiver and proceed to step 2.
 - If wire(s) pull out of connector plug, wire harness needs to be replaced.(see ref # 2)



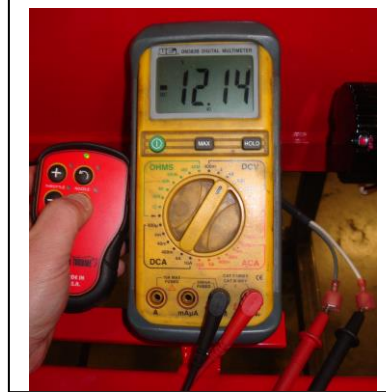
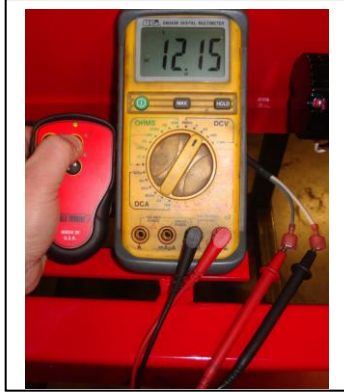
2. Check Remote Transmitter by pressing each button to ensure that the light on Transmitter has a green light.



- If the LED lights do not appear when pressing each button on the transmitter, replace transmitter batteries. If a LED lights still fail to function after replacing the batteries, replace the transmitter.
 - If the lights functions correctly, proceed to step #3
3. Check the set screw on the rotation motor pulley to make sure pulley is not loose and spinning on the shaft.
 - If set screw is loose, rotate nozzle assembly until pulley and flat spot on shaft are aligned. Tighten set screw and test nozzle functions with remote.
 - If set screw is tight, proceed to step #4

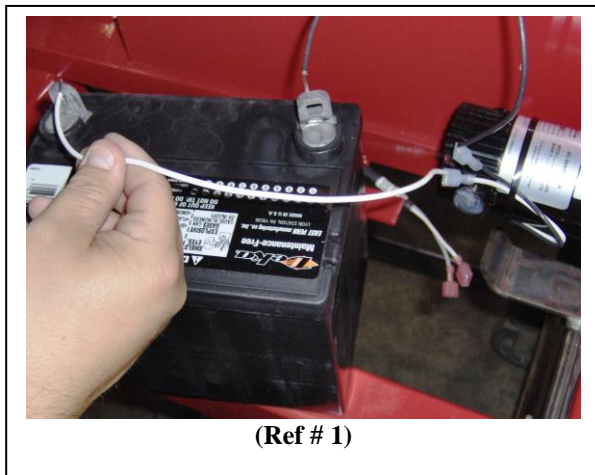
4. With the engine key switch in the run position, disconnect the nozzle wires leading from the rotation motor and wire harness (white and grey) at the quick disconnects. The following test will require an electronic multi-meter, set to read at least 12 volts.

- Insert the red probe into the white wire and black probe into the grey wire. Press the nozzle buttons CW or CCW. (Voltage should read approx. +12 volts in one direction and approx. – 12 volts in the opposite direction.) If the proper voltage is confirmed and all wire connections are secure, proceed to step # 5

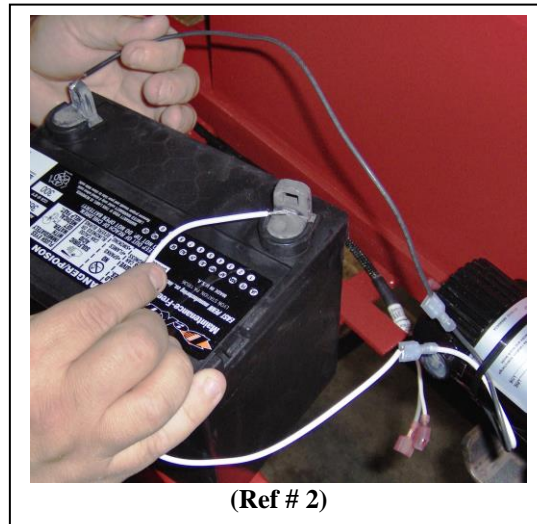


- If proper voltage has not been verified contact Buffalo Turbine for further instructions.

5. Apply power to the rotation motor directly. Both wires from rotation motor need to be connected to the battery. (Ex. white to positive terminal & black to negative terminal) Then reverse the wire connections to the battery. (Ex. black to positive terminal & white to negative terminal)



(Ref # 1)



(Ref # 2)

- If rotation motor rotates in both directions, the motor is ok.
- If rotation motor will not rotate in either direction with power applied contact Buffalo Turbine.
- If rotation motor rotates in one direction but the other, contact Buffalo Turbine.

If necessary, contact Buffalo Turbine at 716-592-2700 for more instructions.

OPTIONS TOW BEHIND

NOZZLES

ALUMINUM NOZZLES



Aerospace Polymer Nozzle - Part# 2851
Standard Clamp Band - Part# 1173



Flexible Nozzle Assembly - Part# 3345
Various lengths available.
Ideal for rough terrain.

Gyratory Atomizing Nozzle - Part# 2547
(Safety guard removed for clarity)



Optional aluminum nozzles **will not** connect to the standard Aerospace Polymer Nozzle (Part# 2851).
Requires: Two 45° elbow segments (Part# 1171) and two additional clamp bands (Part# 1173).

- 12" Nozzle Extension - Part# 1468
- 15" Nozzle Extension - Part# 1842
- 20" Nozzle Extension - Part# 1845

10" Round Nozzle - Part# 1417
12" Round Nozzle - Part# 1172
Improves air velocity with lower horsepower and hydraulic blower units



12" Rectangular Nozzle - Part# 1469
19" Rectangular Nozzle - Part# 1425
5.5"x15" opening - extra length/more concentrated air flow. Uses - heavy wet debris, plugs, top dressing. No ground clearance in the vertical down position.



Fishtail Nozzle - Part# 1743
5"x30" (wide angle) opening. Distributes a large volume of air at a lower velocity over a wide area. Easily converts blower into a "Greens Fan". Adaptable to all models. Not as effective at moving debris.



D.O.T. TRAILER

Part# 1613-D for 8000, KB4, EFI
Part# 3410 for Mega



2" BALL RECEIVER HITCH

Part# 2981



FORK POCKET

Part# 3894
Great for moving blowers around jobsites and bed mount / skid mount applications.



LINE DRIVER ATTACHMENT

Part# 2419



CORDED CONTROL

Part# 2788 for KB4 Model
Part# 2787 for Mega, Diesel Models



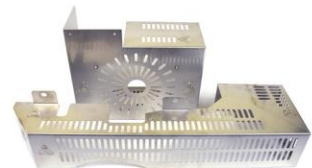
ROTATION BEARING KIT

Part# 3838
Increases rotation speed and reduces load on rotation motor.



EXHAUST GUARD KIT

Part# 2988
Available for Model: KB



BUFFALO TURBINE PRODUCTS

CYCLONE 8000

The Cyclone 8000 Debris Blower is strategically priced to fit most budgets. This little powerhouse is already proving its worthiness in saving Time and Labor.



MEGA

The word "MEGA" is defined as Impressive, Extreme and Mammoth. The NEW Buffalo Turbine MEGA lives up to its name!



CYCLONE PTO

The Cyclone PTO incorporates an "Advanced" direct drive gearbox which significantly reduces routine maintenance. At 238lbs, it's the lightest, meanest turbine style PTO blower available!



CYCLONE SQUARED

The Cyclone Squared with its "Twin Turbines", and wireless controlled dual independent nozzles, in most cases can handle twice the work in half the time. This versatile powerhouse is already a favorite on Golf courses, Racetracks, and the Paving Industry.



CYCLONE KB4

The Cyclone KB4 with its "More Powerful" CH740 Kohler Engine and a "State of the Art" Wireless Remote System is the most powerful KB unit to date.



HYDRAULIC

The Hydraulic debris blower features our built in "flow and pressure" control system and easily attaches to most skid steers. This handy attachment comes complete with mounting plate and hoses.

