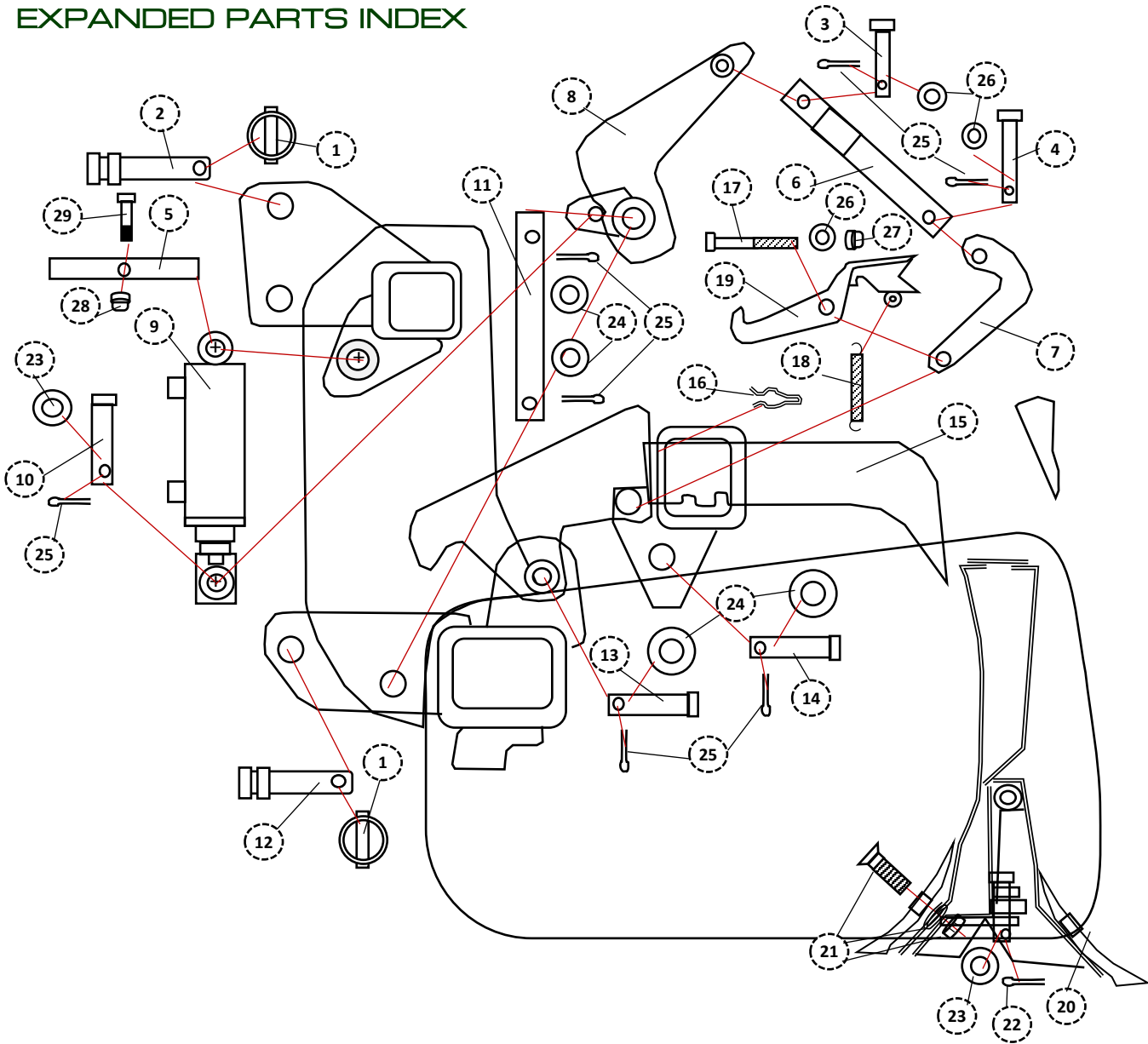


INDUSTRIAL BOX SCRAPER

4C5 INDUSTRIAL BOX SCRAPER

EXPANDED PARTS INDEX



		80	84	88	96	
1	P716175LY	7/16 X 1 3/4" LYNCH PIN	3	3	3	3
2	P100500C2TL	CAT II TOP LINK	1	1	1	1
3	P050175CL	UPPER LINK PIN	1	1	1	1
4	P050200CL	1/2 X 2" CLEVIS PIN	1	1	1	1
5	R05A003	TOP CYLINDER PIN	1	1	1	1
6	P04A01A	BELL CRANK LINK	1	1	1	1
7	P12A14A	J-LINK ASSEMBLY	1	1	1	1
8	P04A71A	BELL CRANK ASSEMBLY	1	1	1	1
9	CI-S2.5X4-10.25	HYDRAULIC LIFT CYLINDER	1	1	1	1
10	P075300CL	LOWER CYLINDER PIN/TAILBOARD PIN	1	1	1	1
11	R05A01912	BELL CRANK SHAFT	1	1	1	1
12	P118500MD	CAT II DRAW PIN	2	2	2	2
13	P100258CLP	PIVOT PIN	2	2	2	2
14	P100358CLP	HOOK PIN	1	1	1	1
15	G163	INDUSTRIAL SHANK	8	8	8	8

		80	84	88	96	
16	SR100	SHANK RETAINER CLIP	8	8	8	8
17	B050400ZP	SHEAR PIN	1	1	1	1
18	S075500HD	HOOK SPRING	1	1	1	1
19	P08A001A	INDUSTRIAL J-HOOK ASSEMBLY	1	1	1	1
20	CEI	INDUSTRIAL CUTTING EDGE	2	2	2	2
21	B058200PA	CUTTING PLOW BOLT ASSEMBLY (BOLT, LOCK WASHER, HEX NUT)	14	14	16	16
22	P11	HAIR PINS	2	2	2	2
23	W075SAEF	BOTTOM CYLINDER PIN WASHER	1	1	1	1
24	W100SAEF	PIVOT EAR WASHER	7	7	7	7
25	P532150COT	5/32 X 1 1/2" COTTER PIN	8	8	8	8
26	W050SAEF	1/2" SAE FLAT WASHER	4	4	4	4
27	N050L	1/2" LOCK NUT	1	1	1	1
28	N038L	3/8" LOCK NUT	1	1	1	1
29	B038250S	3/8 X 2 1/2" SHANK BOLT	1	1	1	1
	UT101	UTILITY TOOL	1	1	1	1

PLEASE NOTE: The illustrations above are for reference only. SUPERIOR IMPLEMENTS reserves the right to change or correct part numbers, descriptions or dimensions at any time. If you have specific questions about parts not specified in the illustration above, please contact your SUPERIOR IMPLEMENTS authorized dealer.