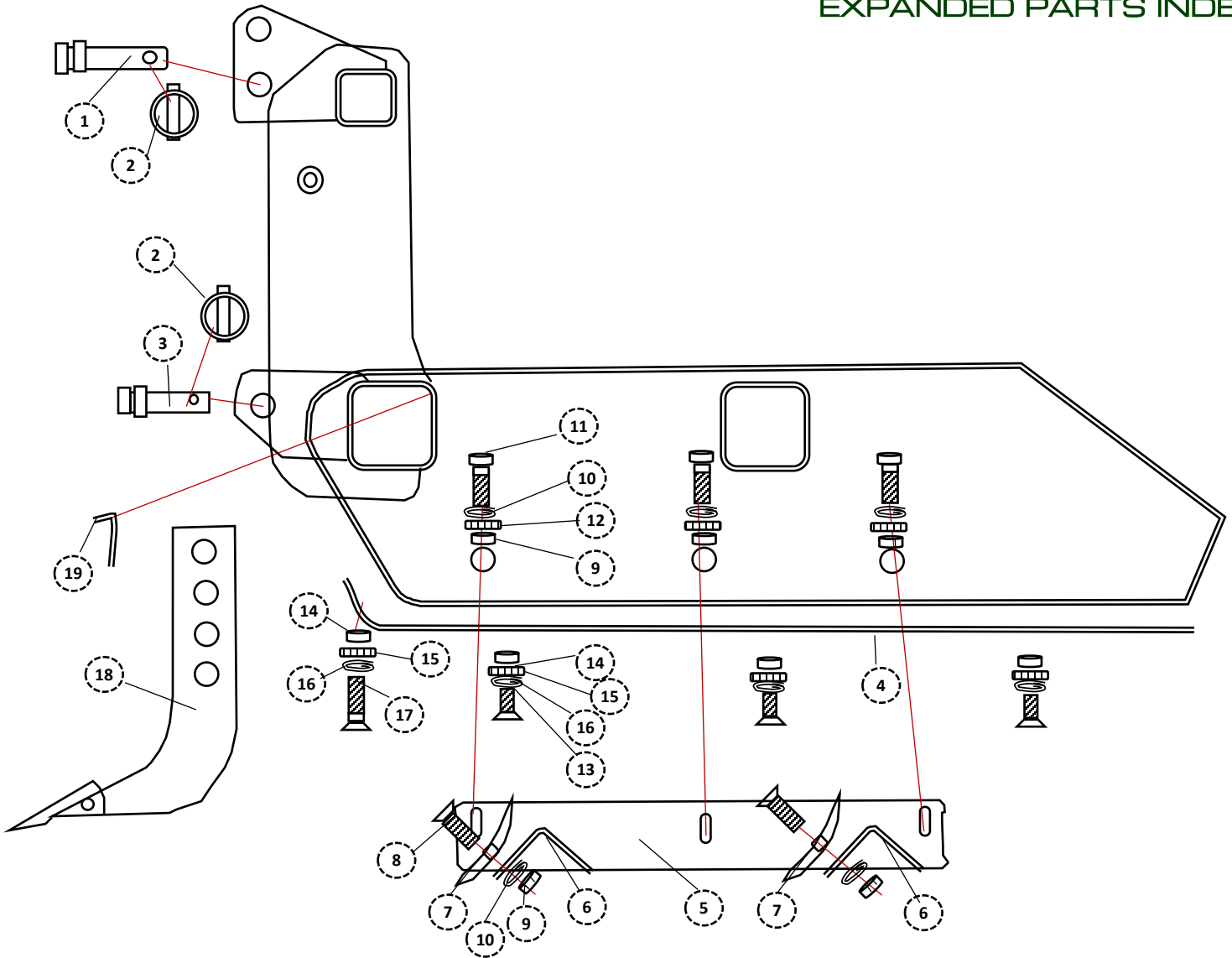


GRADING SCRAPER

INDUSTRIAL GRADING SCRAPER

EXPANDED PARTS INDEX



		7	8	10	12	
1	P075500C1TL	CAT I TOP LINK PIN	1	--	--	--
1	P100500C2TL	CAT II TOP LINK	--	1	1	1
2	P716175LY	7/16 X 1 1/2" LYNCH PIN	3	3	3	3
3	P118500MD	CAT II DRAW PIN (GSI8/10/12)	2	2	2	2
4	F25GSI01	GSI SKID PLATE	2	2	2	2
5	P03GSI01	BOLT PLATE	2	2	2	2
6	A18GSI(701/802/1003/204)	CUTTING EDGE ANGLE (7/8/10/12)	2	2	2	2
7	CE	CUTTING EDGE	2	2	2	2
8	B058200P	5/8 X 2" PLOW BOLT	14	16	20	24
9	N058H	5/8" HEX NUT	20	22	26	30

		7	8	10	12	
10	W058L	5/8" LOCK WASHER	20	22	26	30
11	B058200HX	5/8 X 2" HEX BOLT	6	6	6	6
12	W058SAEF	5/8" FLAT WASHER SAEF	6	6	6	6
13	B038150CS	3/8 X 1 1/2" COUNTER SUNK BOLT	8	8	8	8
14	N038H	3/8" NUT	10	10	10	10
15	W038F	3/8" FLAT WASHER SAEF	12	12	12	12
16	W038L	3/8" LOCK WASHER	10	10	10	10
17	B038150	3/8" X 1 1/2" BOLT	2	2	2	2
18	H434	SCRAPER SHANK WITH 4 HOLES	7	7	9	9
19	P058300BL	1/2 X 3" BENT "L" PIN	7	7	9	9

PLEASE NOTE: The illustrations above are for reference only. SUPERIOR IMPLEMENTS reserves the right to change or correct part numbers, descriptions or dimensions at any time. If you have specific questions about parts not specified in the illustration above, please contact your SUPERIOR IMPLEMENTS authorized dealer.