

CONSTRUCTION ATTACHMENTS, INC.



HYDRAULIC BREAKERS

HAMMER SELECTION AND PRODUCT GUIDE
THE #1 BREAKER IN THE WORLD



THE HARDEST
HITTING
HAMMER
IN THE WORLD

1160 CAL COURT, LENOIR, NORTH CAROLINA 28645 USA
www.ConstructionAttachments.com • sales@calmfg.com
(828) 758-2674 • (828) 754-1887 fax

HYDRAULIC BREAKERS

NEW GENERATION SILENCED BREAKER SERIES

DESIGNED TO AID IN CONSTRUCTION AND DEMOLITION OF:

- Concrete
- Rock
- Trenching / Sloping
- Quarries / Tunnels
- Underwater*

BENEFITS:

- Higher Impact Power
- Greater Productivity
- Easy Maintenance
- Minimal Fatigue on Host Machine



Breaker shown with Kubota QC mount
stand sold separately



	MODEL:	CAL225F	CAL500F	CAL650F	CAL850F	CAL1000F	CAL1200F	CAL2200F
Item No.:		1BR225F-EX	1BR500F-EX	1BR650F-EX	1BR850F-EX	1BR1000F-EX	1BR1200F-EX	1BR2200F-EX
Energy Class (FT-LBS)		225	500	650	850	1,000	1,200	2,200
Blows/Min		550-1,000	600-1,300	550-1,100	380-900	400-1,100	350-1,000	350-900
Weight (LBS)		172	412	573	816	1,076	1,104	2,240
Weight Class (LBS)		1,400-3,000	3,000-8,000	5,000-9,000	5,000-11,000	7,000-15,000	10,000-20,000	20,000-32,000
Pressure Required (PSI)		1,305-1,740	1,280-1,710	1,565-2,347	1,740-2,393	2,030-2,465	2,030-2,465	2,030-2,610
Oil Flow Required (GPM)		3.7-6.6	7.0-16.0	9.25-18.5	10.1-22.1	14.6-24.8	15.9-26.4	23.8-37.1
Tool Diameter (IN)		1.77	2.24	2.76	2.95	3.15	3.54	4.14



HYDRAULIC BREAKERS

NEW GENERATION SILENCED BREAKER SERIES

THE ADVANTAGES OF CONSTRUCTION ATTACHMENTS, INC.

HYDRAULIC BREAKERS

Auto-Stop (Anti-Blank Fire) System

This feature maintains internal component integrity and stability

Through bolt design

Through bolt design for superior durability

Built In Accumulator

Less stress on hydraulic components and absorbs pressure fluctuation inside of the breaker

Wider Range Model Choice

Large model selection to fit all machine needs

All Silenced Excavator Models

Excavator models include new sound suppressed brackets and devices



	MODEL: CAL3200F	CAL4500F	CAL6000F	CAL8000F	CAL11000F	CAL18000F
Item No.:	1BR3200F-EX	1BR4500F-EX	1BR6000F-EX	1BR8000FEX	1BR11000F-EX	1BR18000F-EX
Energy Class (FT-LBS)	3,200	4,500	6,000	8,000	11,000	18,000
Blows/Min	320-800	340-800	250-650	230-600	230-550	200-450
Weight (LBS)	3,336	4,110	5,762	6,430	7,810	15,432
Weight Class (LBS)	32,000-44,000	36,000-56,000	44,000-70,000	70,000-90,000	80,000-140,000	132,000-220,000
Pressure Required (PSI)	2,320-2,755	2,320-2,755	2,320-2,755	2,320-2,755	2,320-2,755	2,320-2,755
Oil Flow Required (GPM)	34.4-68.7	34.4-68.7	47.6-73.9	47.6-84.5	68.7-105.	95-119
Tool Diameter (IN)	4.92	5.32	5.90	6.10	7.6.89	8.26

MID & LARGE EXCAVATORS

HYDRAULIC BREAKERS



Breaker shown with
Skid Steer universal mount
stand sold separately

STANDARD EQUIPMENT INCLUDES:

- (1) Base Breaker Unit
- (1) Mounting Bracket
- (1) Chisel Point
- (1) Tool Kit
- (1) Nitrogen Gauge for Checking Pressure
- (1) Operators Manual



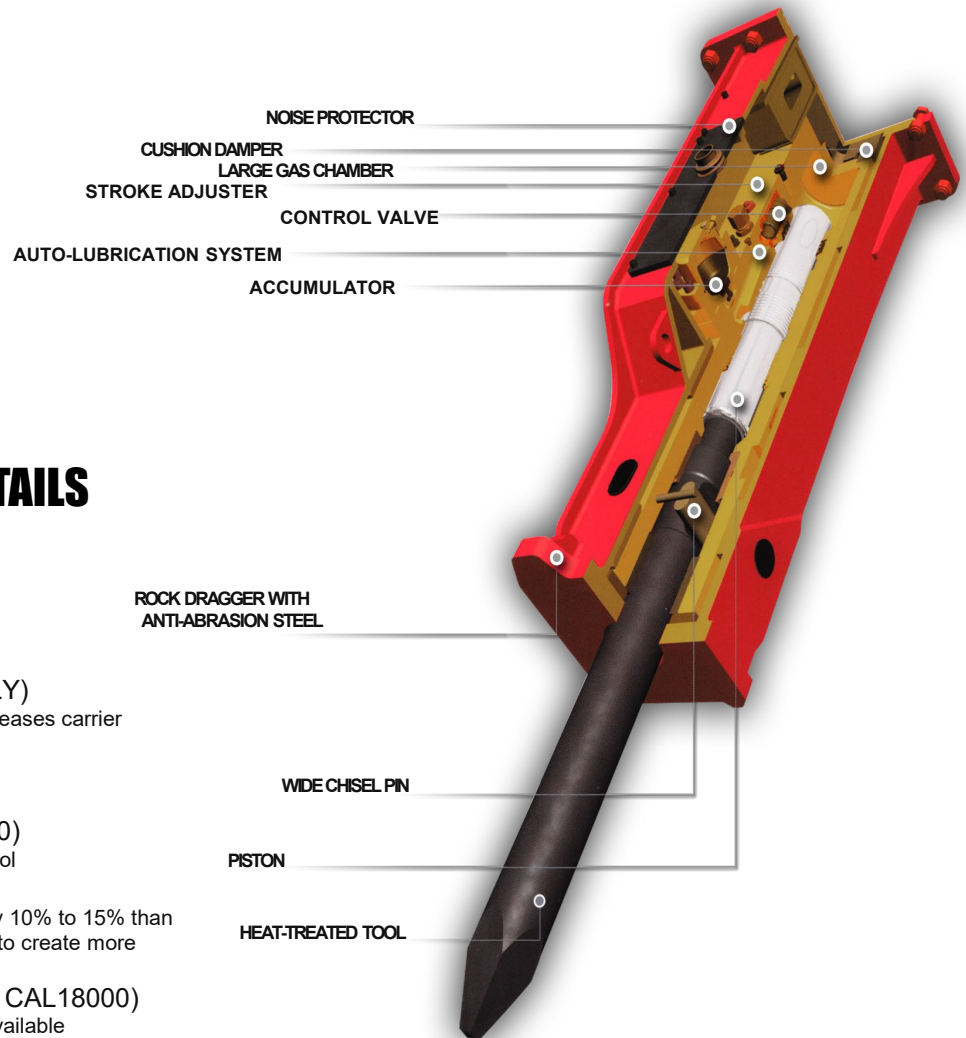
MODEL:	CAL225F	CAL500F	CAL650F	CAL850F	CAL1000F
Item No.:	1BR225F-SS	1BR500F-SS	1BR650F-SS	1BR850F-SS	1BR1000F-SS
Energy Class (FT-LBS)	225	500	650	850	1,000
Blows/Min	550-1,000	600-1,300	550-1,100	380-900	400-1,100
Weight (LBS)	192	516	630	827	1,106
Weight Class (LBS)	1,400-3,000	3,000-8,000	6,000-9,000	5,000-11,000	7,000-15,000
Pressure Required (PSI)	1,305-2,000	1,280-2,500	1,565-3,500	2,000-3,500	2,030-3,500
Oil Flow Required (GPM)	3.7-6.6	7.0-16.0	9.25-18.5	10.1-22.1	14.6-24.8
Tool Diameter (IN)	1.77	2.24	2.76	2.95	3.15

● MINI SKID STEER ●

● SKID STEER ●

HYDRAULIC BREAKERS

SUPERIOR STRENGTH AND CUSTOMER SATISFACTION



HYDRAULIC BREAKER DETAILS

Noise Protector

Less noise (Silenced type) and protection from dirt & debris

Cushion Damper (EXCAVATOR ONLY)

Absorbs repercussion from hammering and increases carrier endurance

Larger Gas Chamber

Ensures higher impact power

Stroke Adjuster (CAL850 – CAL18000)

Maximize productivity from variable speed control

Patented Control Valve

Internal control valve system is more efficient by 10% to 15% than other breaker's valve, hydraulic oil stays cooler to create more impact power

Auto-Lubrication System (CAL650 – CAL18000)

Several types of auto-lubrication systems are available

Accumulator (CAL2200 – CAL18000)

Less stress to hydraulic components by absorbing pressure fluctuation, and increases efficiency by replenishing short oil flow

Rock Dragger

Anti-abrasion steel

Wide Chisel Pin

Larger contact area for more even wear on components

Piston

Longer stroke for higher impact power

Heat-Treated Tool

Better tool performance and longevity

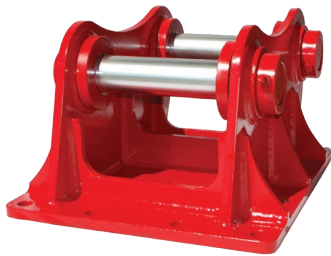
HYDRAULIC BREAKERS

HYDRAULIC BREAKER ATTACHMENT OPTIONS

Our breakers include product specific options:

- Excavator Mount
- Skid Steer Mount
- Dual Mounts

HYDRAULIC BREAKER MOUNTING BRACKETS



AVAILABLE FOR ALL EXCAVATOR MODELS

- Comes standard on all Excavator models (pin-on and quick attach mounts available)
- Can be purchased separately



AVAILABLE FOR ALL SKID STEER MODELS

- Comes standard on all Skid Steer models
- Can be purchased separately



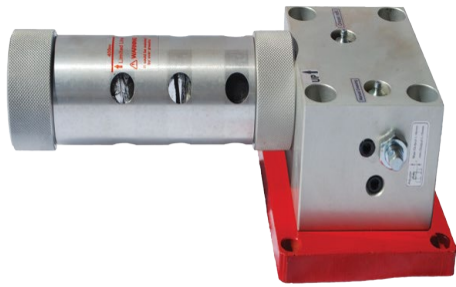
AVAILABLE FOR COMPACT EXCAVATOR, BACKHOE AND SKID STEER MODELS

Dual mount adapter:
Skid Steer type hitch made to attach to existing Excavator bracket on hammer
(allows operator to quickly change between excavator and skid steer operation without unbolting the mounting bracket)

HYDRAULIC BREAKERS

HYDRAULIC BREAKER AUTO LUBE

*Hydraulic and Cartridge styles available



SUITABLE FOR:

- Skid Steers
- Backhoes
- Compact Excavators
- Large Excavators

HYDRAULIC BREAKER CHISELS

A variety of conventional and specialty chisel types offered



CONICAL POINT
Concrete



MOIL POINT
Rock



IN-LINE
Trenches/Slopes



CROSS-CUT
Trenches/Slopes



BLUNT
Quarries



ASPHALT CUTTER
Asphalt



POST DRIVER

HYDRAULIC BREAKERS



*“THE BITTERNESS OF POOR QUALITY LINGERS LONG AFTER
THE SWEETNESS OF A CHEAP PRICE IS FORGOTTEN!”*

Construction Attachments is the leading manufacturer of construction and agricultural grade attachments for tractors, compact excavators, skid steer loaders, tractor loader backhoes, and large excavators.

www.ConstructionAttachments.com