

Gyru-Star

A close-up photograph of a yellow Gyru-Star rotor, a component used in mechanical cipher machines. The rotor is bright yellow and has a central black ring with a square-shaped hole. It is surrounded by numerous grey typewriter keys, which are slightly out of focus, creating a sense of depth. The lighting is dramatic, highlighting the texture of the plastic parts.

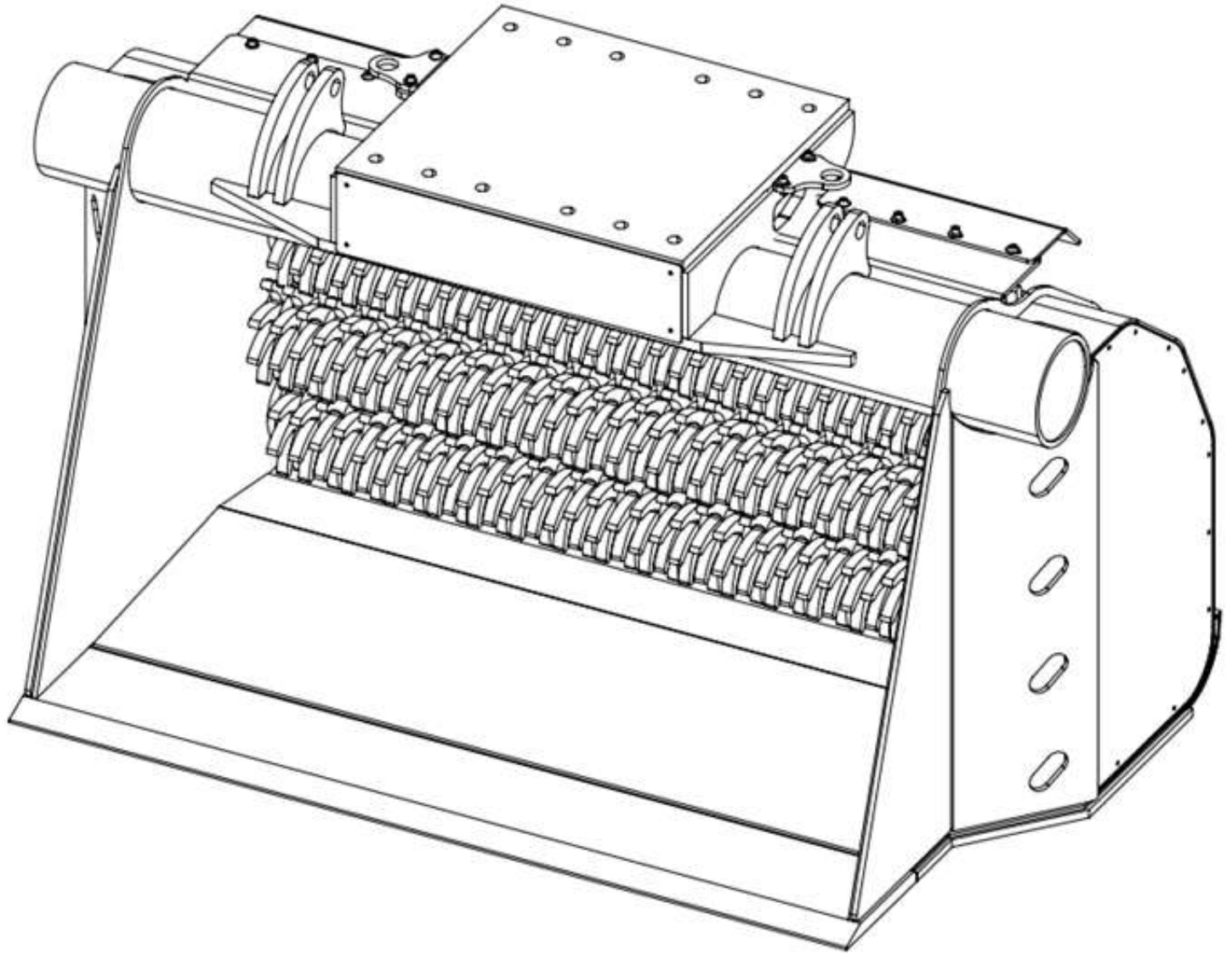
**Parts Catalogue
5 & 6 Rotor Systems
For Dealer Use**

Contents

1. 5 Rotor Layout	5
2. 6 Rotor Layout	6
3. Rotor Group - 20mm Fragment Size	7
4. Rotor Group - 15mm Fragment Size	12
5. Rotor Group - 10mm Fragment Size	17
6. Rotor Assembly.....	22
7. Driveline Group A	24
8. Driveline Group B & C	26
9. Driveline Group D	28
10. Stub Shaft	30
11. Shaft Assembly	31
12. Belt Adjuster.....	32
13. Bearing Support Group - 5 Rotor Overview	33
14. Bearing Support Group - 6 Rotor Overview	34
15. Bearing Support A.....	35
16. Bearing Support B.....	36
17. Bearing Support C.....	37
18. Bearing Support D.....	38

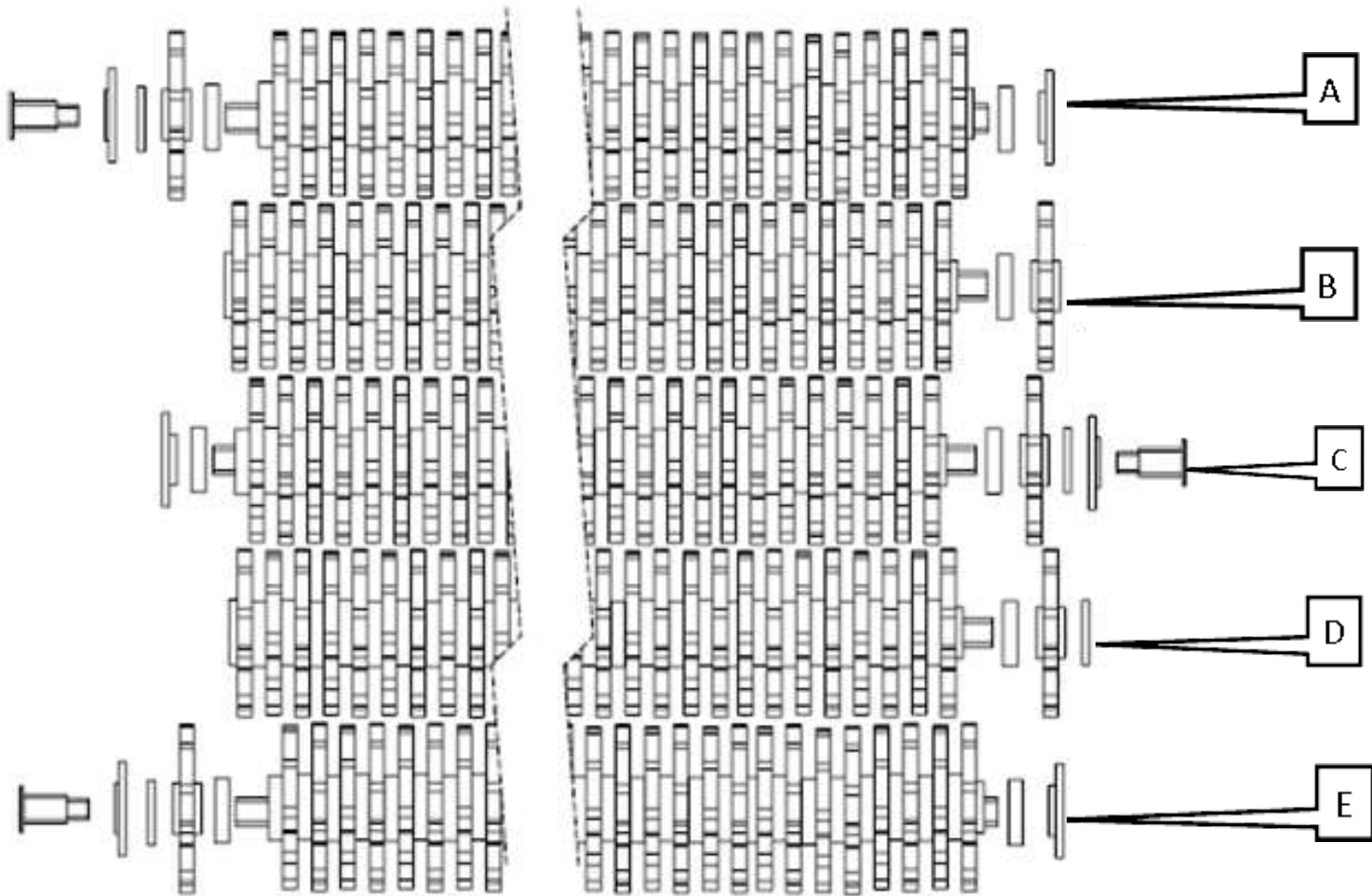
19. Motor Placement	39
20. Motor Assembly.....	40
21. Crossover Hose Group	42
22. Crossover Hose Group	44
23. Hose Group A	45
24. Hose Group B	46
25. Hose Group C	47
26. Door Group	48
27. Stripper Plate	49
28. Accessories	50
29. Safety Decals	51
30. Decals	52

Overview



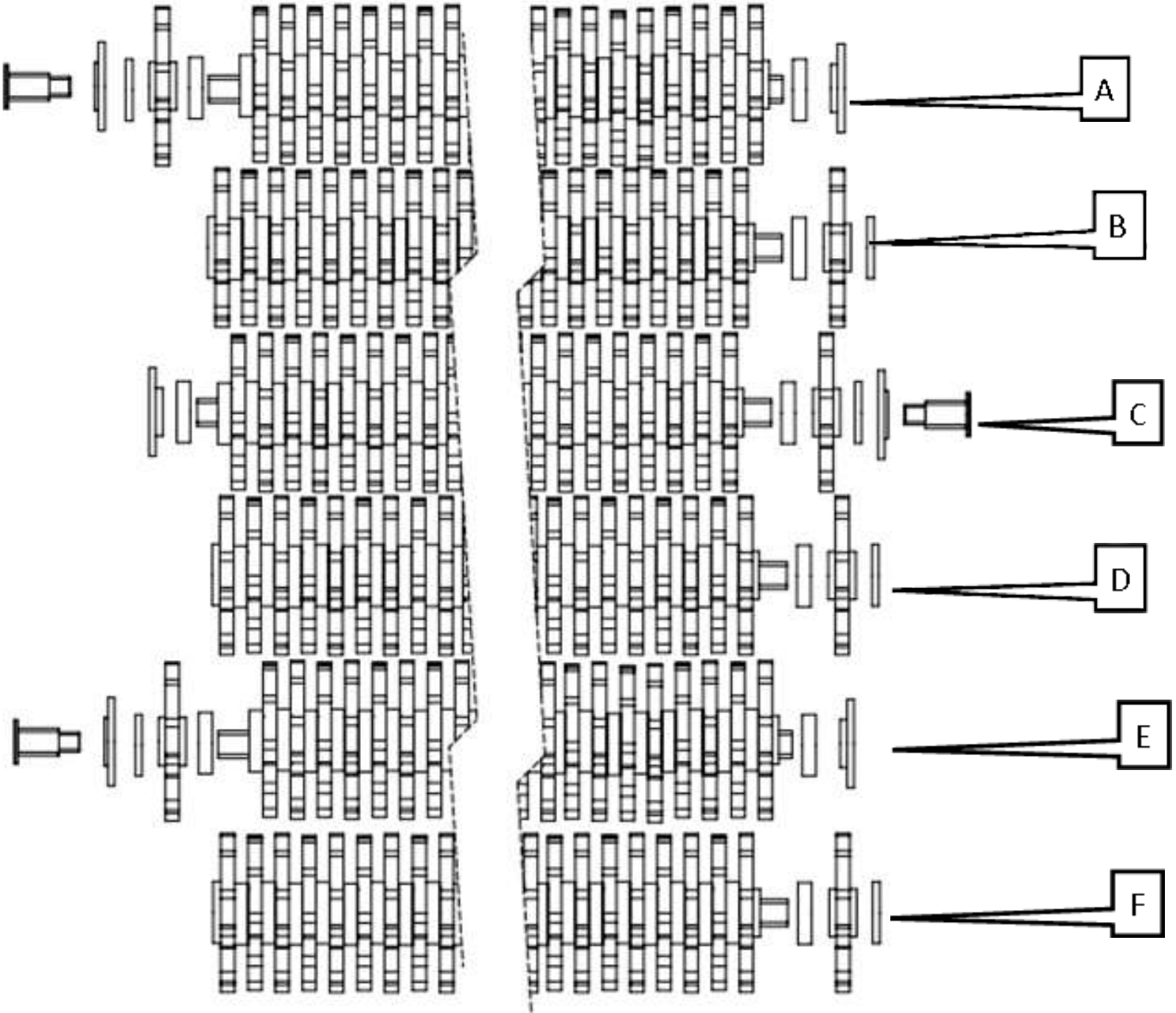
Rotor Group 5-150

20MM FRAGMENT SIZE

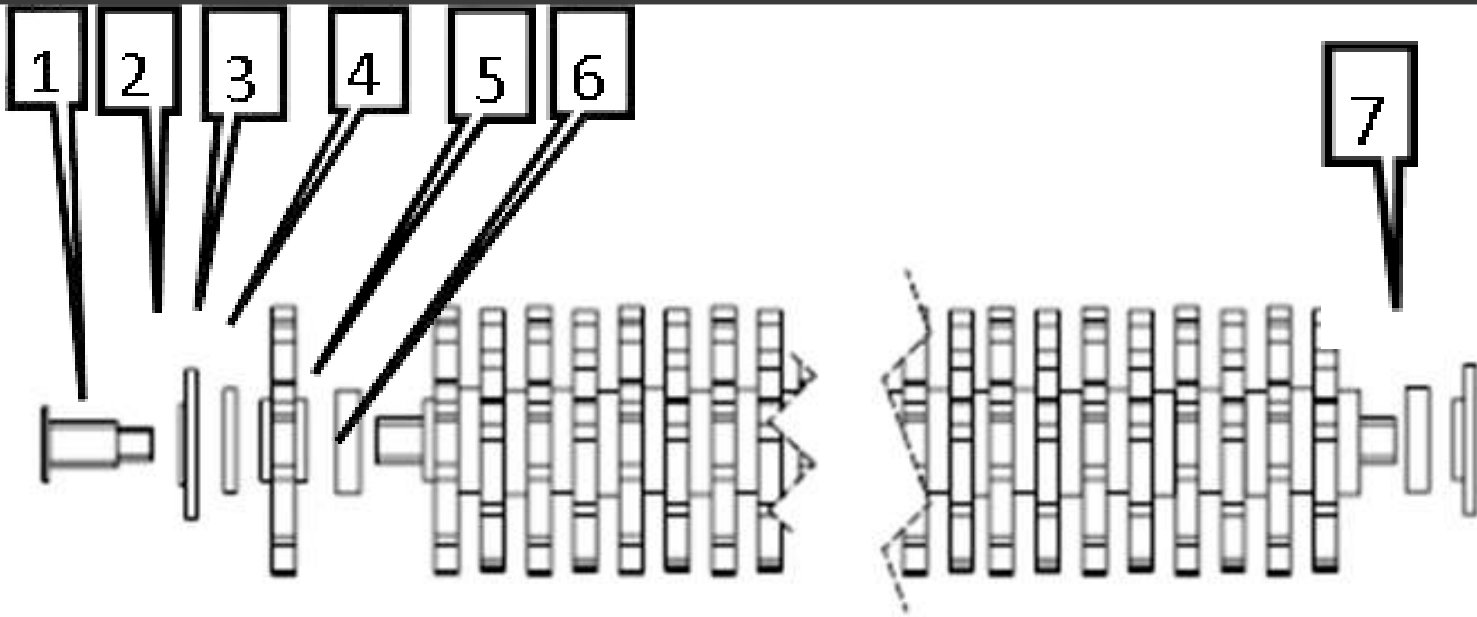


Rotor Group 6-150

20MM FRAGMENT SIZE



Rotor Shaft A & E - Motor



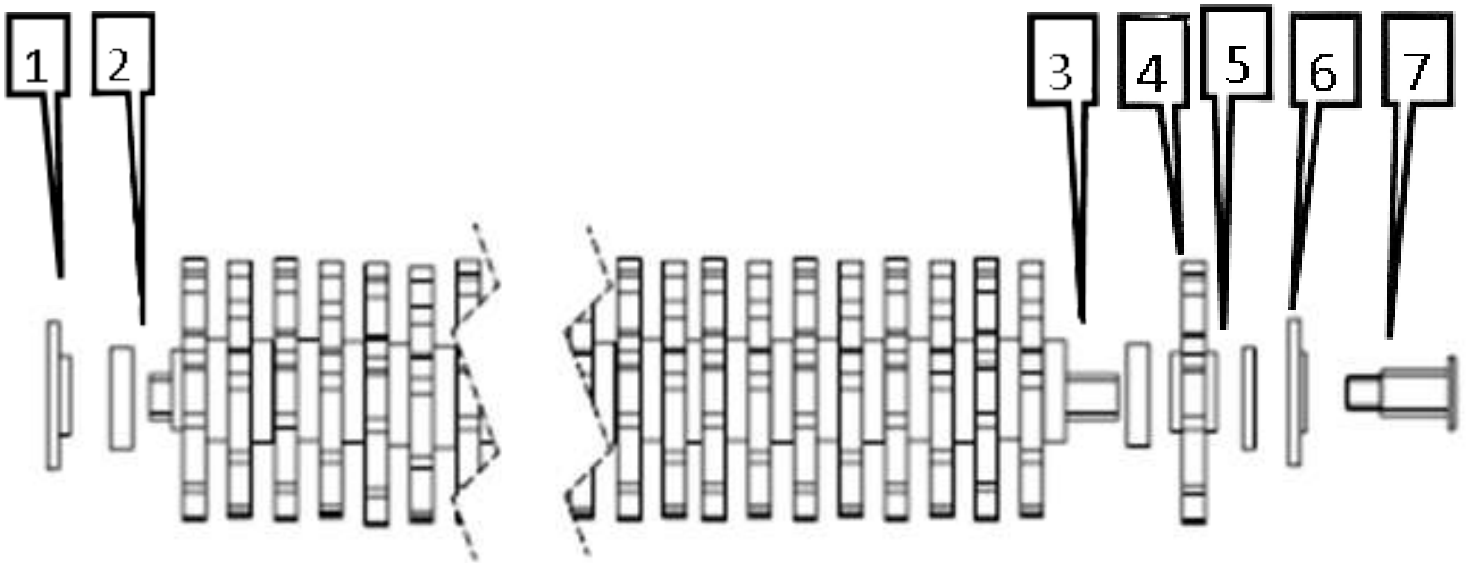
20MM FRAGMENT SIZE

Rotor A					
No.	Part No.	Description	5-150	6-150	
			MAX	HDX	MAX
1	02-33888	SAE Splined Drive Coupling (HD)	1	1	1
2	03-78905	15mm End Cap	1	1	1
3	03-99135	Nylon Locking Ring 90mm OD	1	1	1
4	03-56281	Poly Star (230mm Ten Finger) Yellow	37	37	37
5	03-86116	20mm Locking Ring	37	37	37
6	03-17723	5-150 Rotor Shaft (Motor Pick-up)	1	--	--
6	03-95310	6-150 Rotor Shaft (Motor Pick-up)	--	1	1
7	03-92358	20mm End Cap	1	1	1

20MM FRAGMENT SIZE

Rotor E					
No.	Part No.	Description	5-150	6-150	
			MAX	HDX	MAX
1	02-33888	SAE Splined Drive Coupling (HD)	1	1	1
2	03-78905	15mm End Cap	1	1	1
3	03-99135	Nylon Locking Ring 90mm OD	1	1	1
4	03-56281	Poly Star (230mm Ten Finger) Yellow	37	37	37
5	03-86116	20mm Locking Ring	37	37	37
6	03-17723	5-150 Rotor Shaft (Motor Pick-up)	1	--	--
6	03-95310	6-150 Rotor Shaft (Motor Pick-up)	--	1	1
7	03-92358	20mm End Cap	1	1	1

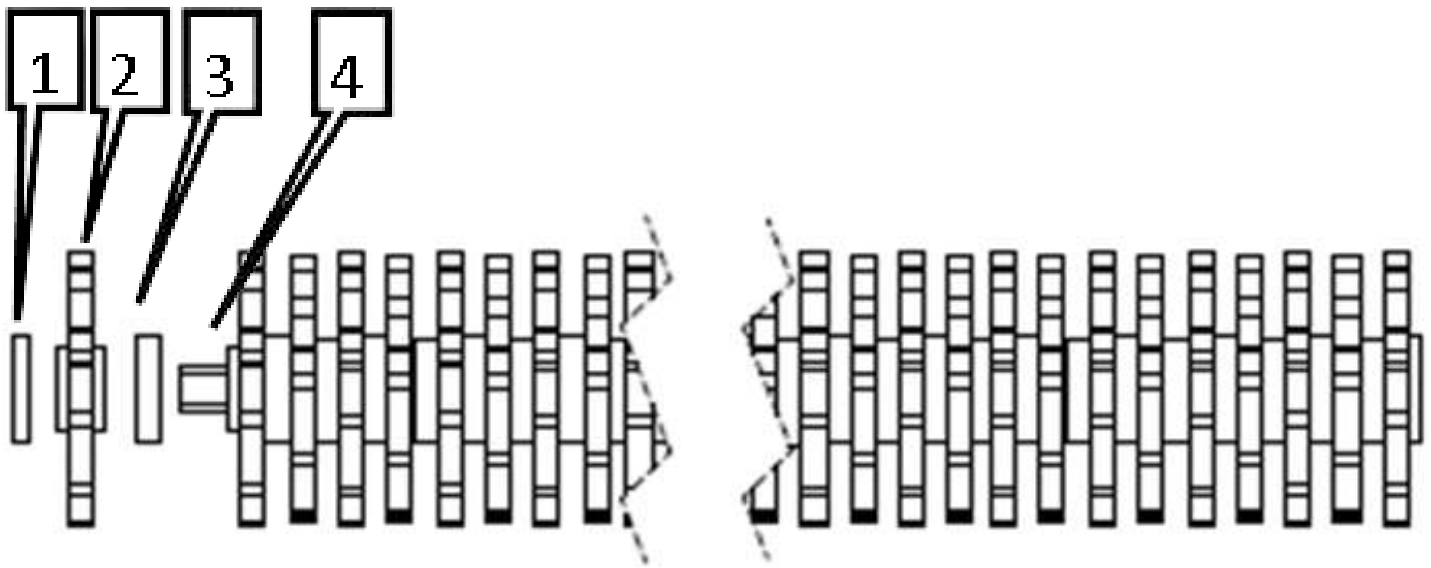
Rotor Shaft C - Motor



20MM FRAGMENT SIZE

Rotor C					
No.	Part No.	Description	5-150	6-150	
			MAX	HDX	MAX
1	03-92358	20mm End Cap	1	1	1
2	03-86116	20mm Locking Ring	37	37	37
3	03-17723	5-150 Rotor Shaft (Motor Pick-up)	1	--	--
3	03-95310	6-150 Rotor Shaft (Motor Pick-up)	--	1	1
4	03-56281	Poly Star (230mm Ten Finger) Yellow	37	37	37
5	03-99135	Nylon Locking Ring 90mm OD	1	1	1
6	03-78905	15mm End Cap	1	1	1
7	02-33888	SAE Splined Drive Coupling (HD)	1	1	1

Rotor Shaft B, D & F



20MM FRAGMENT SIZE

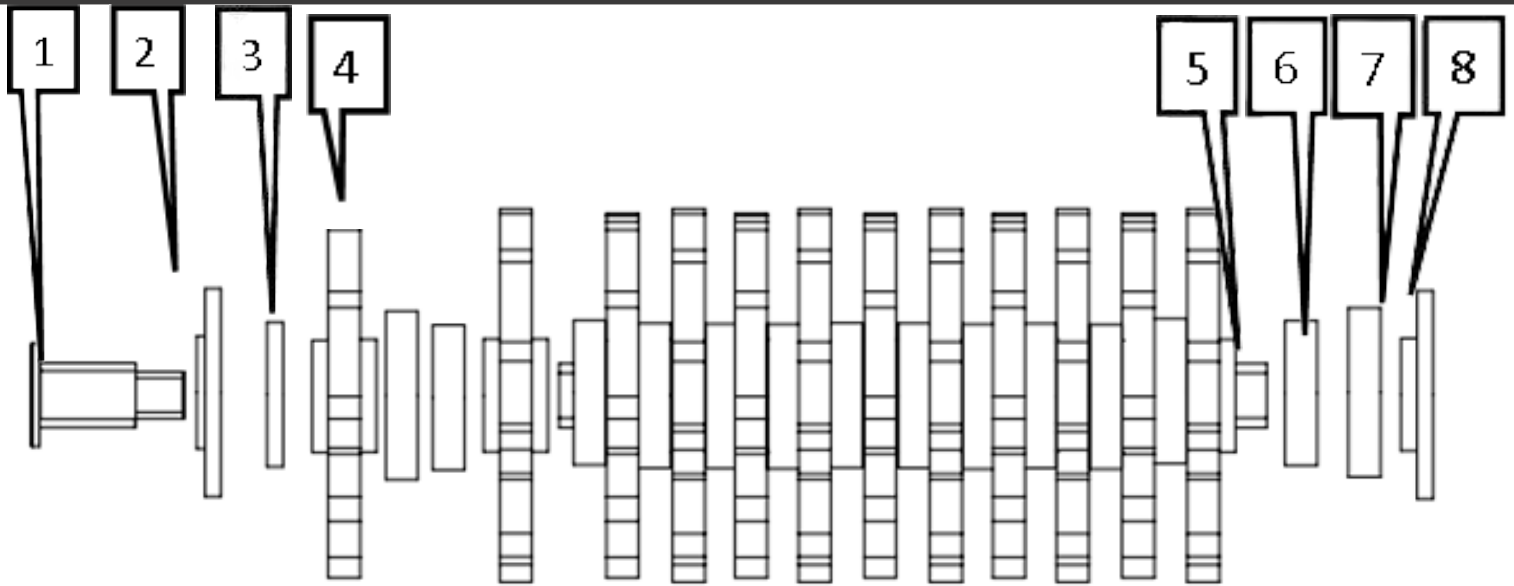
Rotor B					
No.	Part No.	Description	5-150	6-150	
			MAX	HDX	MAX
1	03-99135	Nylon Locking Ring 90mm OD	2	2	2
2	03-56281	Poly Star (230mm Ten Finger) Yellow	38	38	38
3	03-66775	Rotor Shaft 5-150 & 6-150	1	1	1
4	03-86116	20mm Locking Ring	38	38	38

Rotor D					
No.	Part No.	Description	5-150	6-150	
			MAX	HDX	MAX
1	03-11805	Nylon Locking Ring 100mm OD	2	2	2
2	03-56281	Poly Star (230mm Ten Finger) Yellow	38	38	38
3	03-66775	Rotor Shaft 5-150 & 6-150	1	1	1
4	03-86116	20mm Locking Ring	38	38	38

6-150 MODELS ONLY

Rotor F				
No.	Part No.	Description	6-150	
			HDX	MAX
1	03-11805	Nylon Locking Ring 100mm OD	2	2
2	03-56281	Poly Star (230mm Ten Finger) Yellow	38	38
3	03-66775	Rotor Shaft 5-150 & 6-150	1	1
4	03-86116	20mm Locking Ring	38	38

Rotor Shaft A & E - Motor



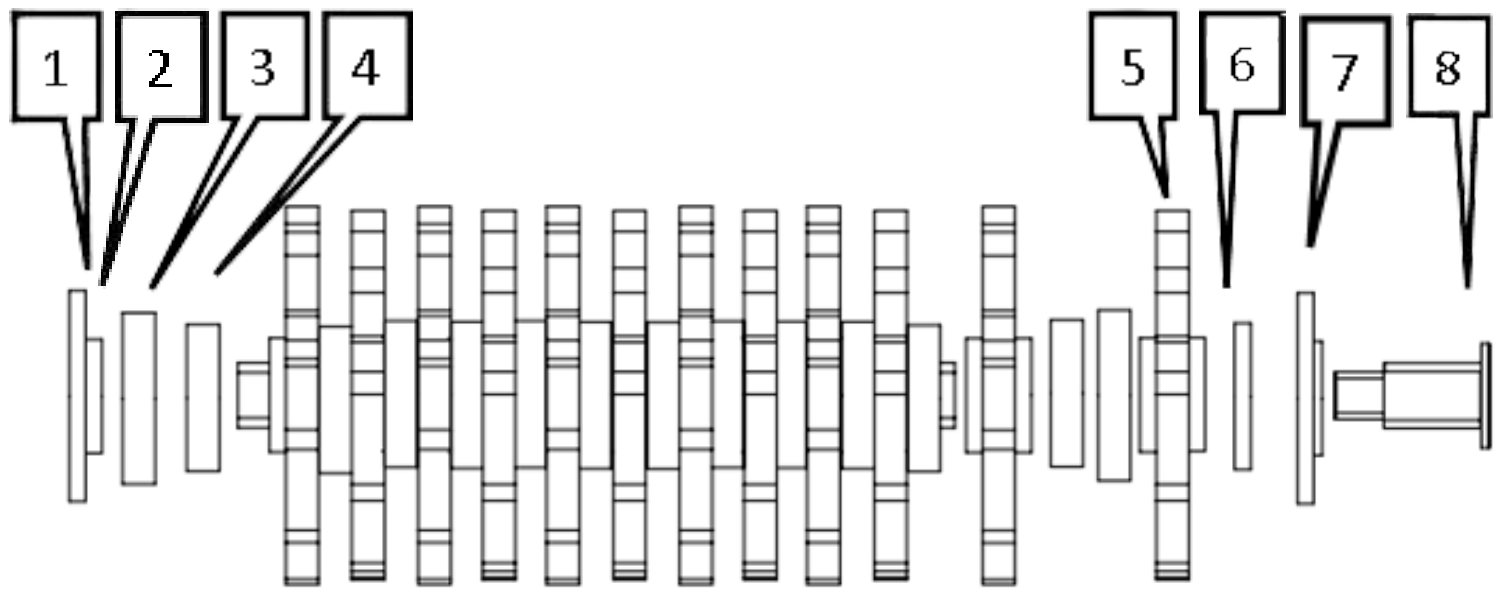
15MM FRAGMENT SIZE

Rotor A					
No.	Part No.	Description	5-150	6-150	
			MAX	HDX	MAX
1	02-33888	SAE Splined Drive Coupling (HD)	1	1	1
2	03-78905	15mm End Cap	1	1	1
3	03-99135	Nylon Locking Ring 90mm OD	1	1	1
4	03-56281	Poly Star (230mm Ten Finger) Yellow	37	37	37
5	03-17723	5-150 Rotor Shaft (Motor Pick-up)	1	--	--
5	03-95310	6-150 Rotor Shaft (Motor Pick-up)	--	1	1
6	03-86116	20mm Locking Ring	37	37	37
7	03-53589	Spacer Ring Grey (15mm Fragment Size)	37	37	37
8	03-92358	20mm End Cap	1	1	1

15MM FRAGMENT SIZE

Rotor E					
No.	Part No.	Description	5-150	6-150	
			MAX	HDX	MAX
1	02-33888	SAE Splined Drive Coupling (HD)	1	1	1
2	03-78905	15mm End Cap	1	1	1
3	03-11805	Nylon Locking Ring 100mm OD	1	1	1
4	03-56281	Poly Star (230mm Ten Finger) Yellow	37	37	37
5	03-17723	5-150 Rotor Shaft (Motor Pick-up)	1	--	--
5	03-95310	6-150 Rotor Shaft (Motor Pick-up)	--	1	1
6	03-86116	20mm Locking Ring	37	37	37
7	03-53589	Spacer Ring Grey (15mm Fragment Size)	37	37	37
8	03-92358	20mm End Cap	1	1	1

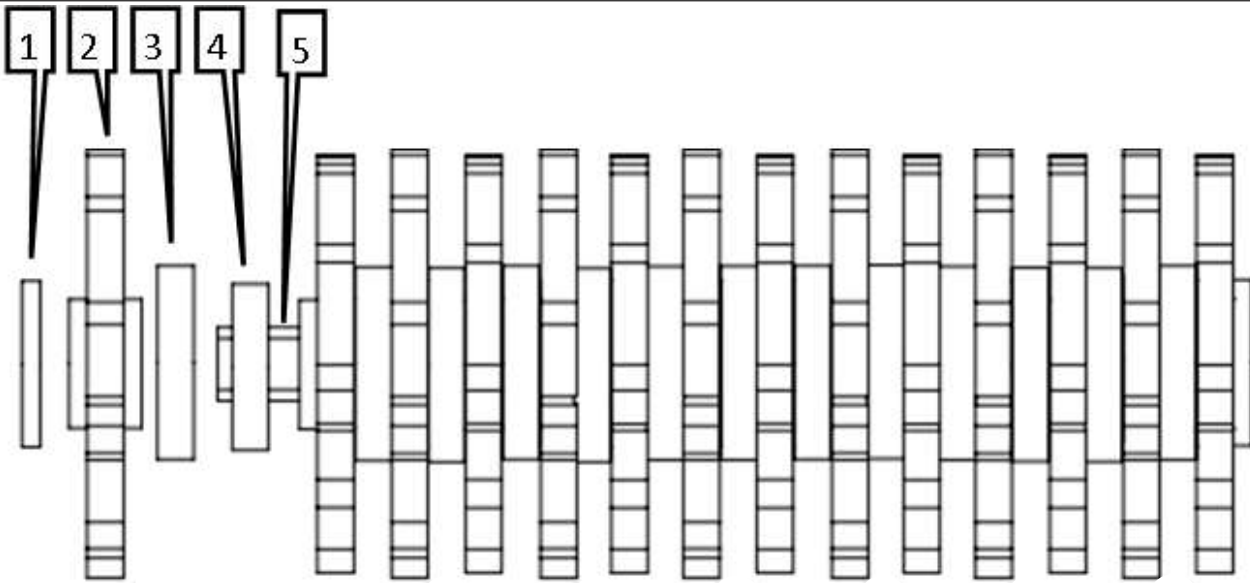
Rotor Shaft C - Motor



15MM FRAGMENT SIZE

Rotor C					
No.	Part No.	Description	5-150	6-150	
			MAX	HDX	MAX
1	03-92358	20mm End Cap	1	1	1
2	03-53589	Spacer Ring Grey (15mm Fragment Size)	37	37	37
3	03-86116	20mm Locking Ring	37	37	37
4	03-95310	6-150 Rotor Shaft (Motor Pick-up)	--	1	1
4	03-17723	5-150 Rotor Shaft (Motor Pick-up)	1	--	--
5	03-56281	Poly Star (230mm Ten Finger) Yellow	37	37	37
6	03-11805	Nylon Locking Ring 100mm OD	1	1	1
7	03-78905	15mm End Cap	1	1	1
8	02-33888	SAE Splined Drive Coupling (HD)	1	1	1

Rotor Shaft B, D & F



15MM FRAGMENT SIZE

Rotor B					
No.	Part No.	Description	5-150	6-150	
			MAX	HDX	MAX
1	03-11805	Nylon Locking Ring 100mm OD	2	2	2
2	03-56281	Poly Star (230mm Ten Finger) Yellow	38	38	38
3	03-53589	Spacer Ring grey (15mm Fragment Size)	38	38	38
4	03-86116	20mm Locking Ring	38	38	38
5	03-66775	Rotor Shaft 5-150 & 6-150	1	1	1

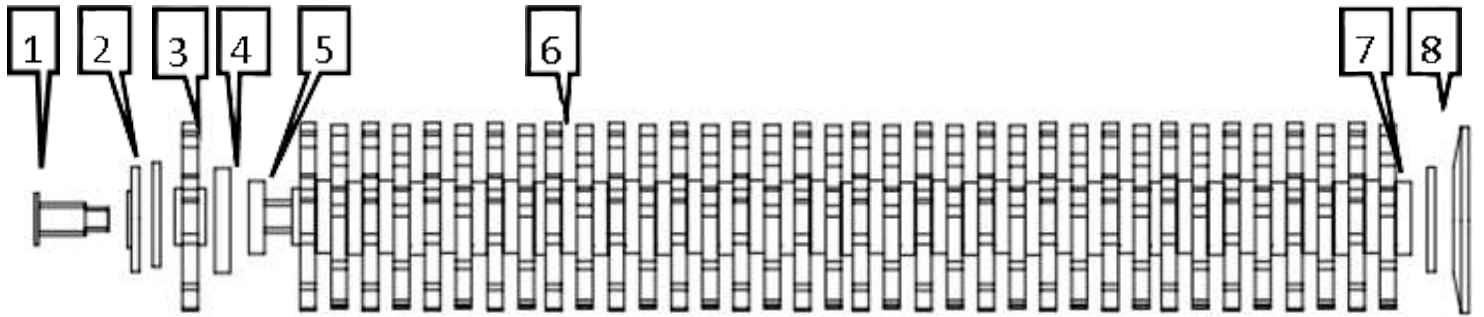
15MM FRAGMENT SIZE

Rotor D					
No.	Part No.	Description	5-150	6-150	
			MAX	HDX	MAX
1	03-11805	Nylon Locking Ring 100mm OD	2	2	2
2	03-56281	Poly Star (230mm Ten Finger) Yellow	38	38	38
3	03-53589	Spacer Ring grey (15mm Fragment Size)	38	38	38
4	03-86116	20mm Locking Ring	38	38	38
5	03-66775	Rotor Shaft 5-150 & 6-150	1	1	1

6-150 MODELS ONLY

Rotor F					
No.	Part No.	Description	6-150		
			HDX	MAX	
1	03-11805	Nylon Locking Ring 100mm OD	2	2	
2	03-56281	Poly Star (230mm Ten Finger) Yellow	38	38	
3	03-53589	Spacer Ring grey (15mm Fragment Size)	38	38	
4	03-86116	20mm Locking Ring	38	38	
5	03-66775	Rotor Shaft 5-150 & 6-150	1	1	

Rotor Shaft A & E - Motor



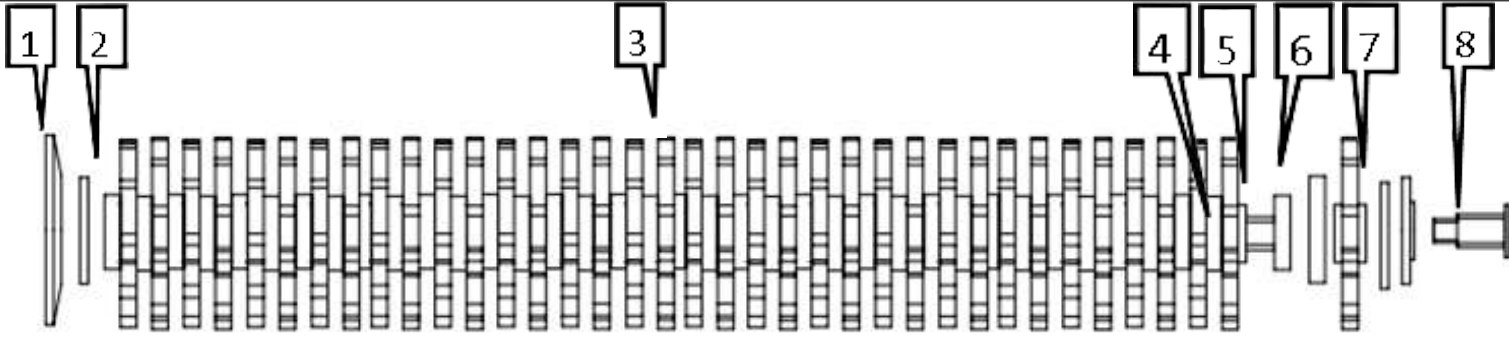
10MM FRAGMENT SIZE

Rotor A					
No.	Part No.	Description	5-150	6-150	
			MAX	HDX	MAX
1	02-33888	SAE Splined Drive Coupling (HD)	1	1	1
2	03-78905	15mm End Cap	1	1	1
3	03-56416	Spacer Ring Yellow (10mm Fragment Size)	36	36	36
4	03-86116	20mm Locking Ring	36	36	36
5	03-17723	5-150 Rotor Shaft (Motor Pick-up)	1	--	--
5	03-95310	6-150 Rotor Shaft (Motor Pick-up)	--	1	1
6	03-56281	Poly Star (230mm Ten Finger) Yellow	37	37	37
7	03-43590	Nylon Locking Ring 129.5mm OD	2	2	2
8	03-14412	Yellow End Disc 230mm x 20mm	1	1	1

10MM FRAGMENT SIZE

Rotor E					
No.	Part No.	Description	5-150	6-150	
			MAX	HDX	MAX
1	02-33888	SAE Splined Drive Coupling (HD)	1	1	1
2	03-78905	15mm End Cap	1	1	1
3	03-56416	Spacer Ring Yellow (10mm Fragment Size)	36	36	36
4	03-86116	20mm Locking Ring	36	36	36
5	03-17723	5-150 Rotor Shaft (Motor Pick-up)	1	--	--
5	03-95310	6-150 Rotor Shaft (Motor Pick-up)	--	1	1
6	03-56281	Poly Star (230mm Ten Finger) Yellow	37	37	37
7	03-43590	Nylon Locking Ring 129.5mm OD	2	2	2
8	03-14412	Yellow End Disc 230mm x 20mm	1	1	1

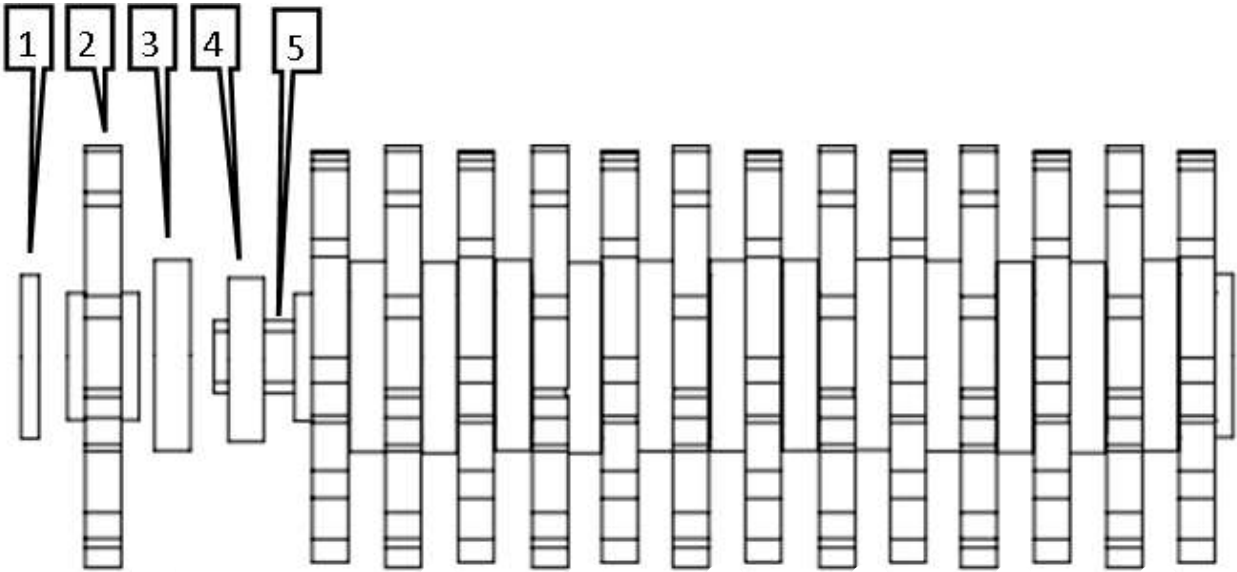
Rotor Shaft C - Motor



10MM FRAGMENT SIZE

Rotor C					
No.	Part No.	Description	5-150	6-150	
			MAX	HDX	MAX
1	03-14412	Yellow End Disc 230mm x 20mm	1	1	1
2	03-43590	Nylon Locking Ring 129.5mm OD	2	2	2
3	03-56281	Poly Star (230mm Ten Finger) Yellow	37	37	37
4	03-17723	5-150 Rotor Shaft (Motor Pick-up)	1	--	--
4	03-95310	6-150 Rotor Shaft (Motor Pick-up)	--	1	1
5	03-86116	20mm Locking Ring	36	36	36
6	03-56416	Spacer Ring Yellow (10mm Fragment Size)	36	36	36
7	03-78905	15mm End Cap	1	1	1
8	02-33888	SAE Splined Drive Coupling (HD)	1	1	1

Rotor Shaft B, D & F



10MM FRAGMENT SIZE

Rotor B					
No.	Part No.	Description	5-150	6-150	
			MAX	HDX	MAX
1	03-43590	Nylon Locking Ring 129.5mm OD	2	2	2
2	03-56281	Poly Star (230mm Ten Finger) Yellow	38	38	38
3	03-56416	Spacer Ring Yellow (10mm Fragment Size)	38	38	38
4	03-86116	20mm Locking Ring	38	38	38
5	03-66775	Rotor Shaft 5-150 & 6-150	1	1	1

10MM FRAGMENT SIZE

Rotor D					
No.	Part No.	Description	5-150	6-150	
			MAX	HDX	MAX
1	03-43590	Nylon Locking Ring 129.5mm OD	2	2	2
2	03-56281	Poly Star (230mm Ten Finger) Yellow	38	38	38
3	03-56416	Spacer Ring Yellow (10mm Fragment Size)	38	38	38
4	03-86116	20mm Locking Ring	38	38	38
5	03-66775	Rotor Shaft 5-150 & 6-150	1	1	1

6-150 Models Only

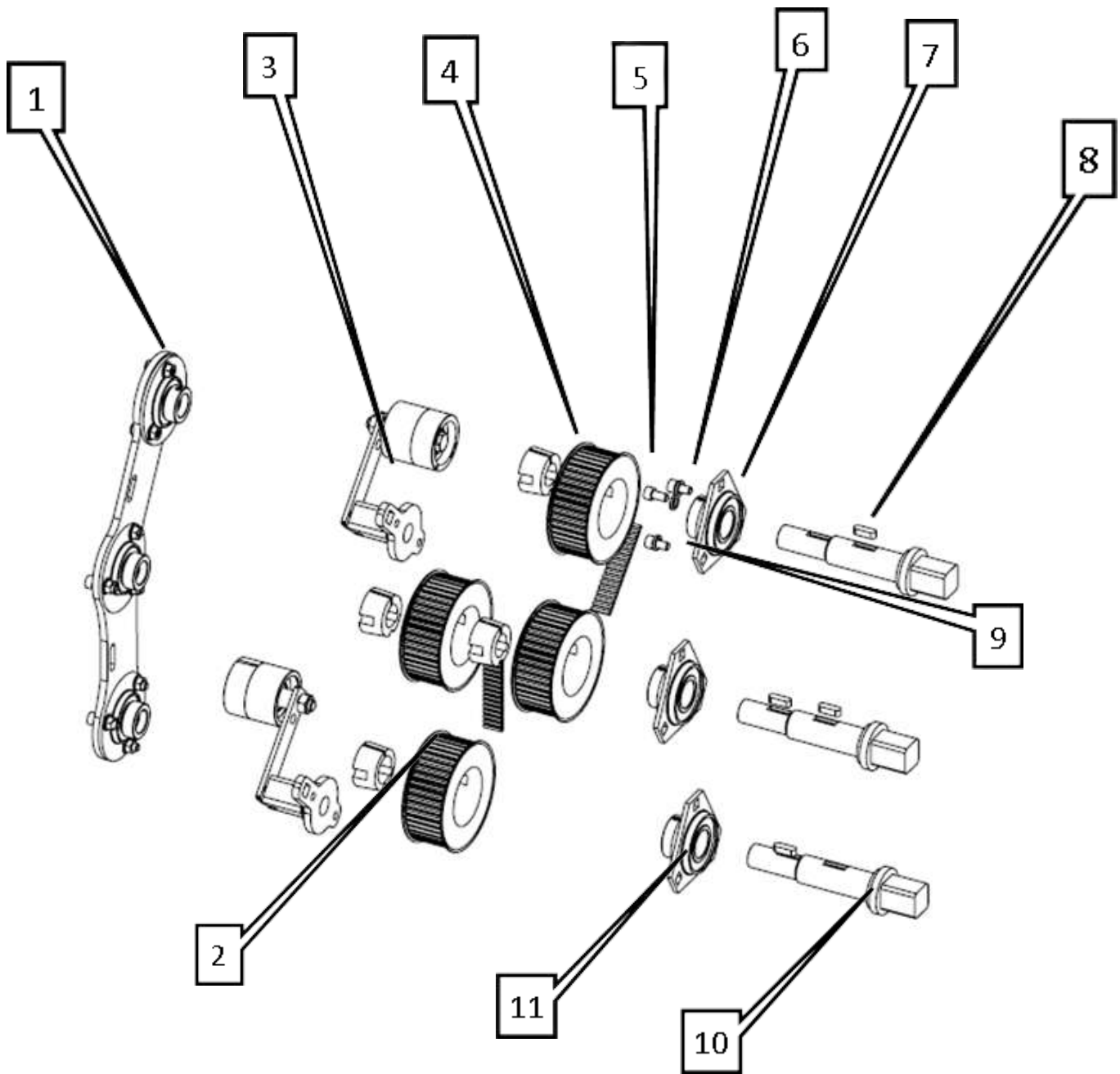
Rotor F					
No.	Part No.	Description	6-150		
			HDX	MAX	
1	03-43590	Nylon Locking Ring 129.5mm OD	2	2	
2	03-56281	Poly Star (230mm Ten Finger) Yellow	38	38	
3	03-56416	Spacer Ring Yellow (10mm Fragment Size)	38	38	
4	03-86116	20mm Locking Ring	38	38	
5	03-66775	Rotor Shaft 5-150 & 6-150	1	1	

Rotor Assembly

Part No	Description	Qty	Notes
03-43324	Complete Rotor Assembly 5-150 20mm	1	Consists of: 03-21623 Qty 2 03-39538 Qty 1 03-84756 Qty 2
03-21623	5-150 Driven Motor Shaft 20mm	2	
03-39538	5-150 Driven Reversed Motor Shaft 20mm	1	
03-84756	5-150 Non-Driven Shaft	2	
03-21313	Complete Rotor Assembly 5-150 15mm	1	Consists of: 03-59820 Qty 2 03-47481 Qty 1 03-70533 Qty 2
03-59820	5-150 Driven Motor Shaft 15mm	2	
03-47481	5-150 Driven Reversed Motor Shaft 15mm	1	
03-70533	5-150 Non-Driven Shaft 15mm	2	
03-62954	Complete Rotor Assembly 5-150 10mm	1	Consists of: 03-37153 Qty 2 03-81047 Qty 1 03-44632 Qty 2
03-37153	5-150 Driven Motor Shaft 10mm	2	
03-81047	5-150 Driven Reversed Motor Shaft 10mm	1	
03-44632	5-150 Non-Driven Shaft 10mm	2	

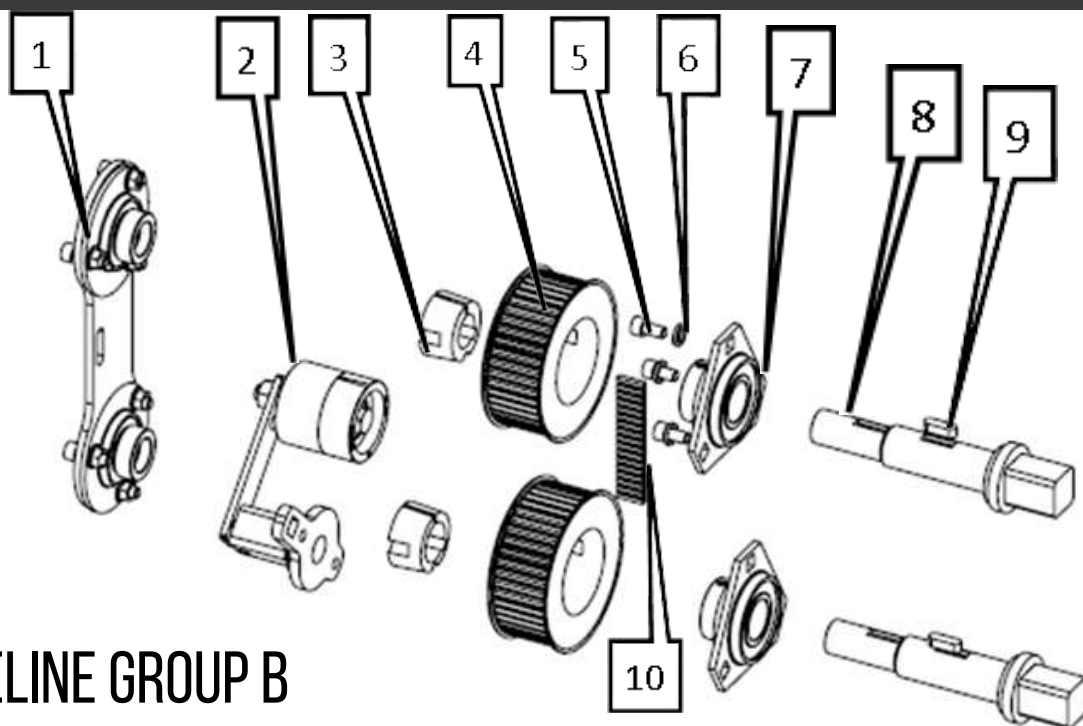
Part No	Description	Qty	Notes
03-63738	Complete Rotor Assembly 6-150 20mm	1	Consists of: 03-47328 Qty 2 03-88761 Qty 1 03-84756 Qty 3
03-47328	6-150 Driven Motor Shaft 20mm	2	
03-39538	6-150 Driven Reversed Motor Shaft 20mm	1	
03-84756	6-150 Non-Driven Shaft	3	
03-46527	Complete Rotor Assembly 6-150 15mm	1	Consists of: 03-80072 Qty 2 03-91642 Qty 1 03-70533 Qty 3
03-80072	6-150 Driven Motor Shaft 15mm	2	
03-91642	6-150 Driven Reversed Motor Shaft 15mm	1	
03-70533	6-150 Non-Driven Shaft 15mm	3	
03-20309	Complete Rotor Assembly 6-150 10mm	1	Consists of: 03-65507 Qty 2 03-55244 Qty 1 03-44632 Qty 3
03-65507	6-150 Driven Motor Shaft 10mm	2	
03-55244	6-150 Driven Reversed Motor Shaft 10mm	1	
03-44632	6-150 Non-Driven Shaft 10mm	3	

Driveline Group A



No.	Part No.	Description	5-150	6-150	
			MAX	HDX	MAX
1	--	Please see Bearing Support Plate A Diagram - page 35	--	--	--
2	02-14066	Taper Bush 2012-25	2	2	2
3	--	Please see Belt Adjuster Diagram - page 32	--	--	--
4	02-91615	Taper Bush 2012-30	2	2	2
5	02-45078	Carbon Belt Pulley (8MDC3645)	4	4	4
6	06-47900	M10 X 16mm Socket Cap Screw	9	9	9
7	06-23107	M10 Spring Washer	9	9	9
8	02-62292	Key	4	4	4
9	02-28566	Carbon Belt (8MDC-37)	2	2	2
10	02-51376	Keyed Shaft	3	3	3
11	02-23430	Bearing SLFT30C99	3	3	3

Driveline Group B & C



DRIVELINE GROUP B

No.	Part No.	Description	5-150	6-150	
			MAX	HDX	MAX
1	--	Please see Bearing Support Plate B Diagram - page 36	--	--	--
2	--	Please see Belt Adjuster Reference - page 32	--	--	--
3	02-91615	Taper Bush 2012-30	2	2	2
4	02-45078	Carbon Belt Pulley (8MDC3645)	2	2	2
5	06-47900	M10 X 16mm Socket Cap Screw	6	6	6
6	06-23107	M10 Spring Washer	6	6	6
7	02-23430	Bearing SLFT30C99	2	2	2
8	02-51376	Keyed Shaft	2	2	2
9	02-62292	Key	4	4	4
10	02-28566	Carbon Belt (8MDC-37)	2	2	2

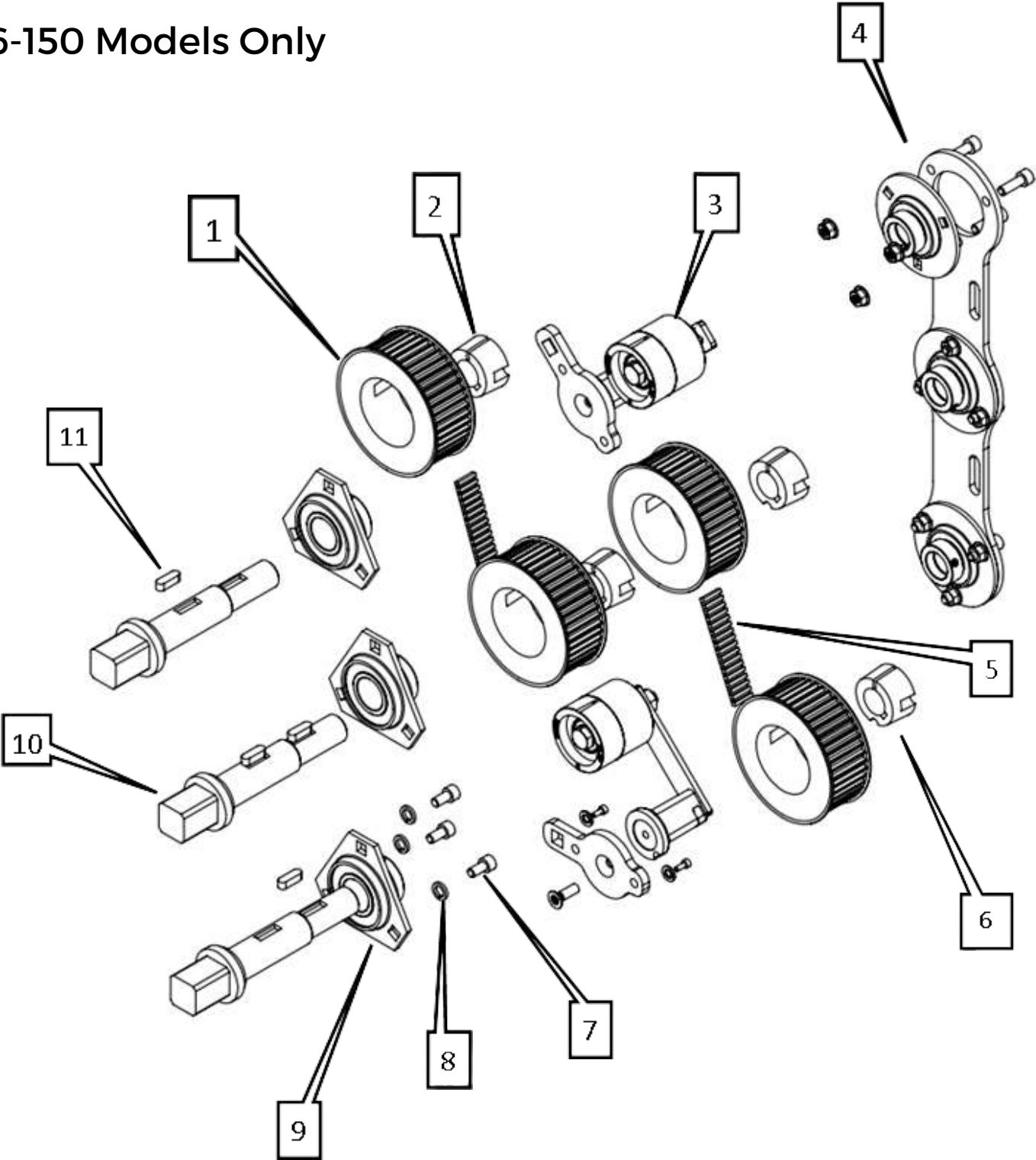
DRIVELINE GROUP C

5-150 models Only

No.	Part No.	Description	5-150
			MAX
1	--	Please see Bearing Support Plate C Diagram - page 37	--
2	--	Please see Belt Adjuster Reference - page 32	--
3	02-91615	Taper Bush 2012-30	2
4	02-45078	Carbon Belt Pulley (8MDC3645)	2
5	06-47900	M10 X 16mm Socket Cap Screw	6
6	06-23107	M10 Spring Washer	6
7	02-23430	Bearing SLFT30C99	2
8	02-51376	Keyed Shaft	2
9	02-62292	Key	4
10	02-28566	Carbon Belt (8MDC-37)	2

Driveline Group D

6-150 Models Only

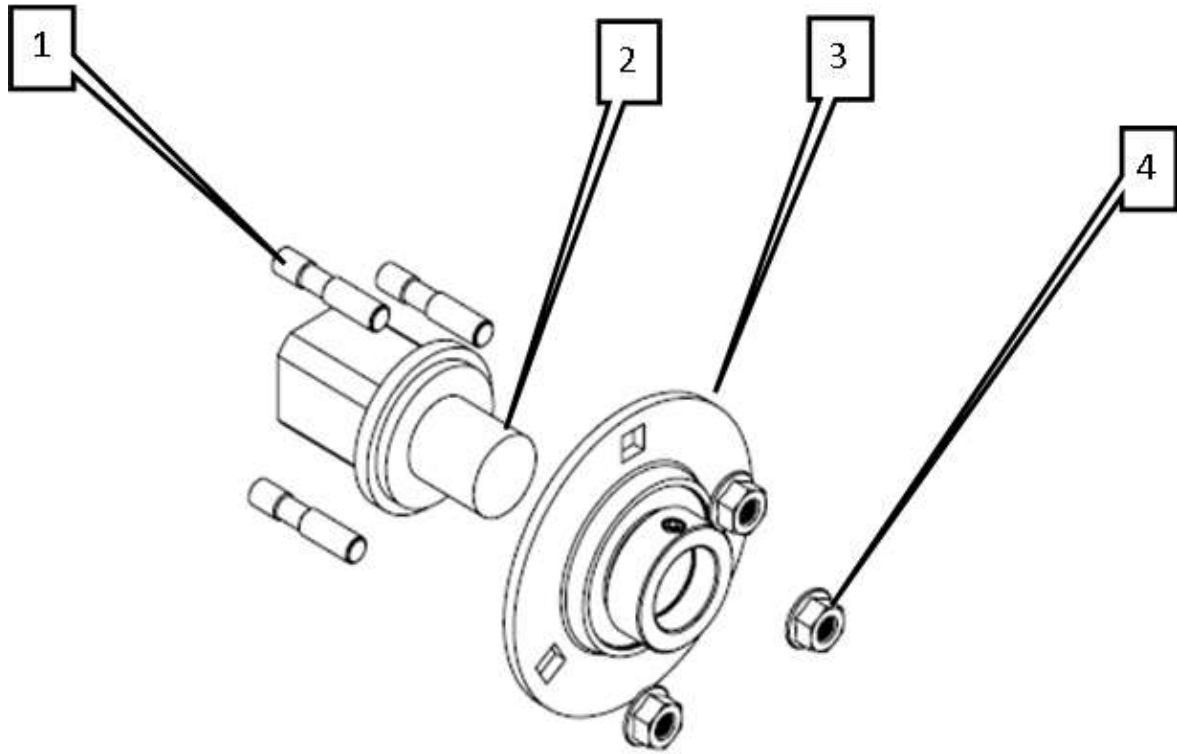


6-150 Models Only

No.	Part No.	Description	6-150	
			HDX	MAX
1	02-45078	Carbon Belt Pulley (8MDC3645)	4	4
2	02-91615	Taper Bush 2012-30	4	4
3	--	Please see Belt Adjuster Diagram - page 32	--	--
4	--	Please see Bearing Support Plate D Diagram - page 38	--	--
5	02-28566	Carbon Belt (8MDC-37)	2	2
6	02-14066	Taper Bush 2012-25	2	2
7	06-47900	M10 X 16mm Socket Cap Screw	9	9
8	06-23107	M10 Spring Washer	9	9
9	02-23430	Bearing SLFT30C99	3	3
10	02-51376	Keyed Shaft	3	3
11	02-62292	Key	5	5

Stub Shaft

6-150 Models Only

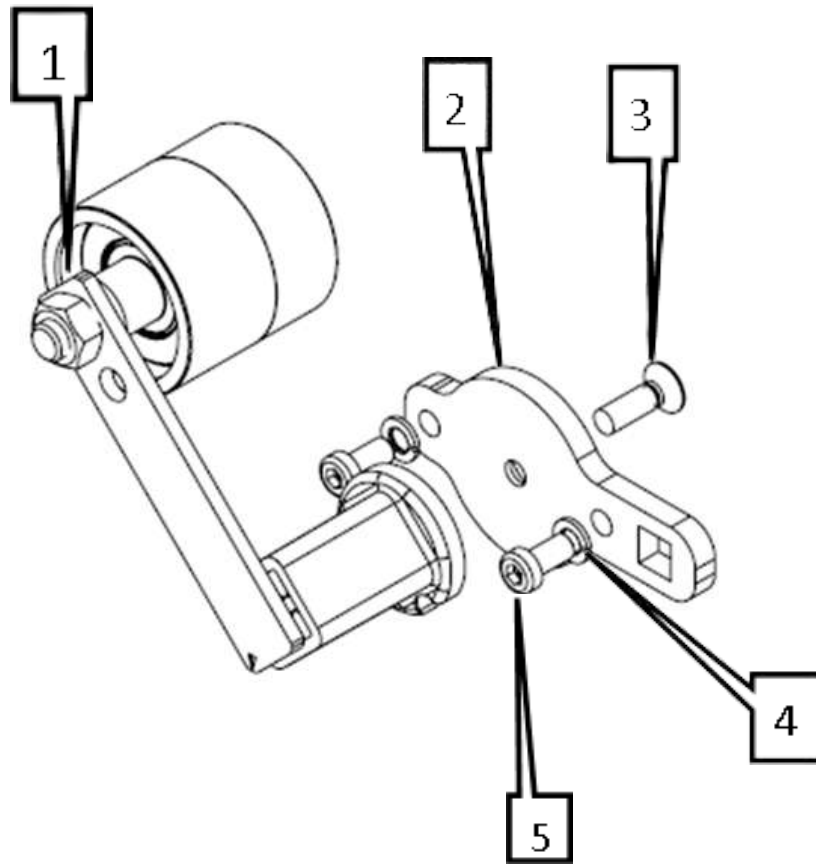


No.	Part No.	Description	6-150	
			HDX	MAX
1	06-44972	M8 x 25 Stud	3	3
2	02-45239	Short Stub Shaft	1	1
3	02-26057	Bearing SLFE25C99 with Housing	1	1
4	06-95773	M8 Flange Nut	3	3

Shaft Assembly

Part No	Description	Qty	Notes
02-96587	Keyed Shaft Assembly 5 & 6 Rotor	1	Consists of: 02-51376 Qty 1 02-23430 Qty 1
02-51376	Keyed Shaft	1	
02-23430	Bearing SLFT30C99 with Housing	1	
02-67603	Short Stub Shaft Assembly 6 Rotor	1	Consists of: 02-45239 Qty 1 02-26057 Qty 1
02-45239	Short Stub Shaft	1	
02-26057	Bearing SLFE25C99 with housing	1	

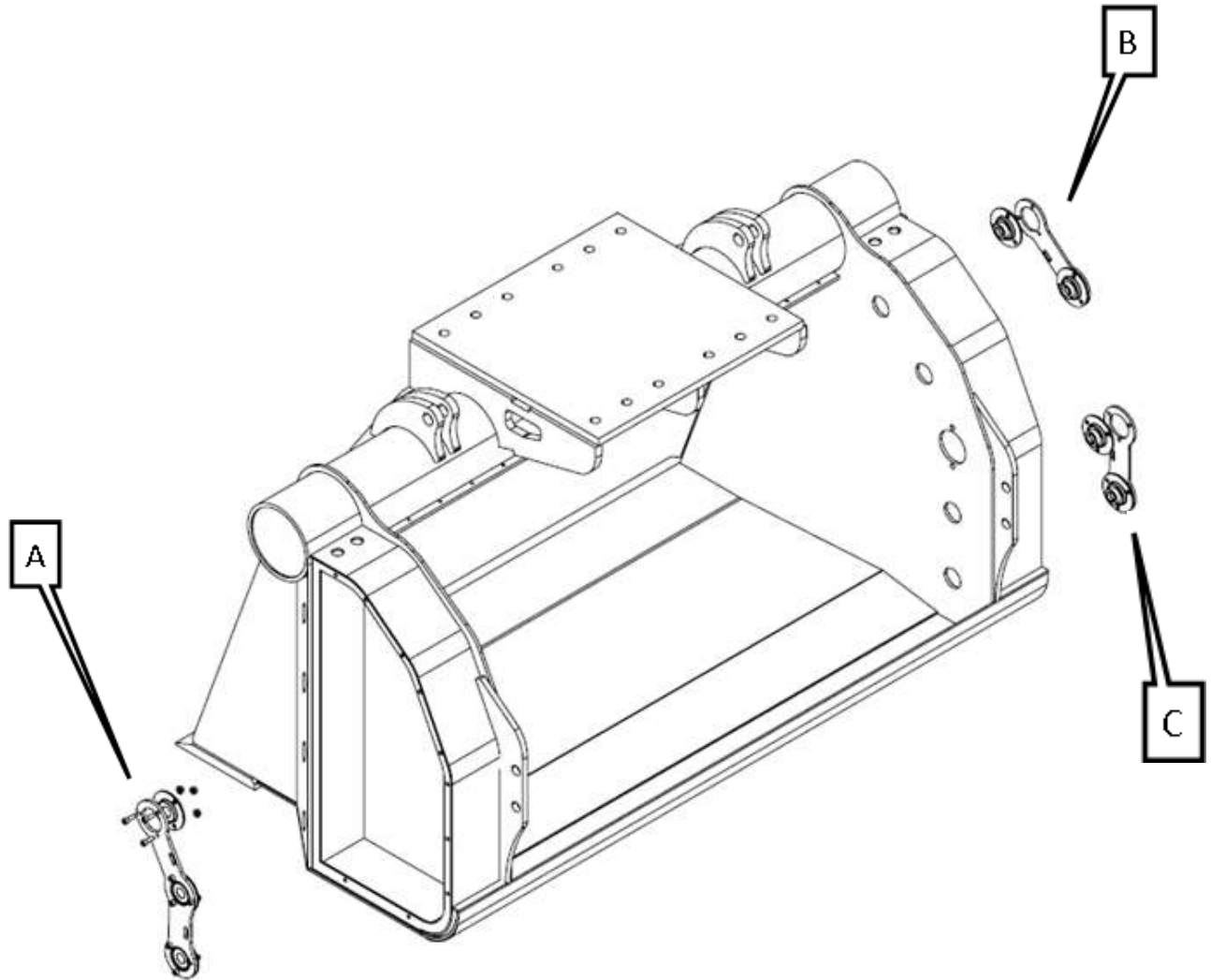
Belt Adjuster



No.	Part No.	Description	5-150		
			MAX	HDX	MAX
1	02-76369	Rosta Belt Adjuster	4	5	5
2	02-72480	Belt Adjuster Plate	4	5	5
3	06-45595	M8 x 25mm Stainless Steel Countersunk Screw	4	5	5
4	06-66588	M8 Spring Washer	8	10	10
5	06-20616	M8 x 16mm Socket Cap Screw	8	10	10

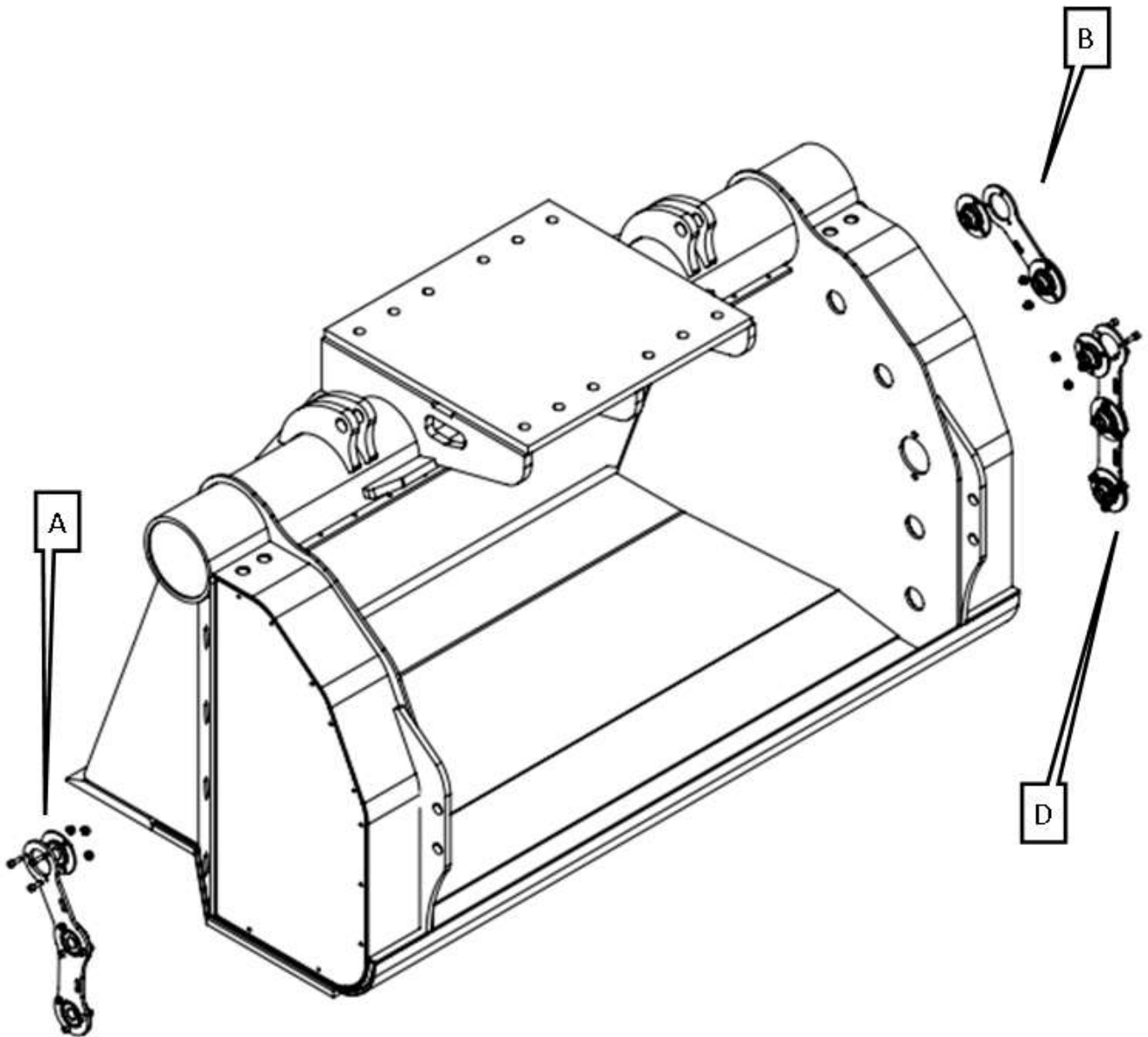
Bearing Support Group

5 ROTOR OVERVIEW

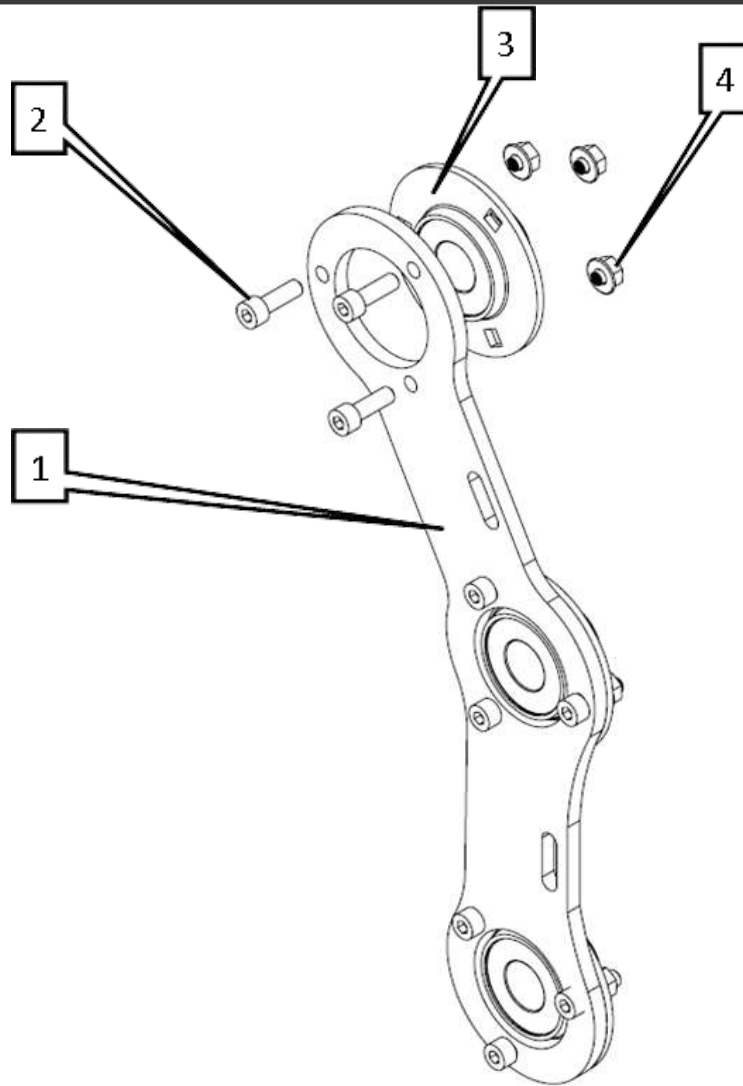


Bearing Support Group

6 ROTOR OVERVIEW

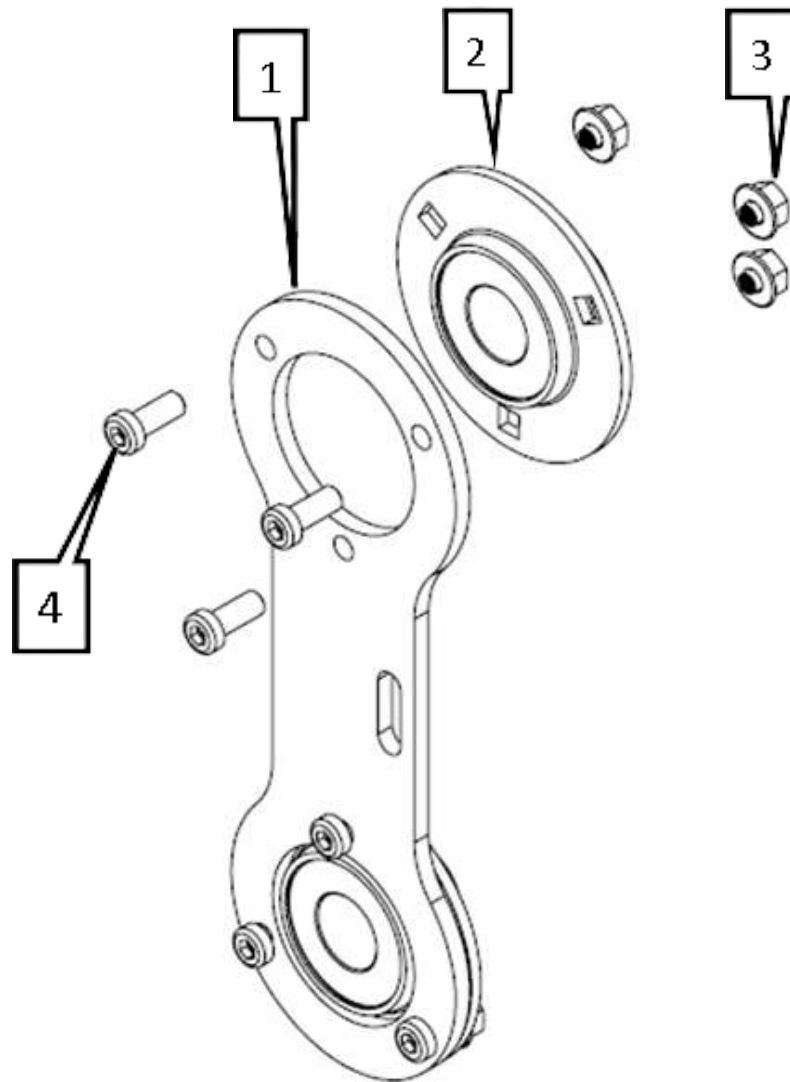


Bearing Support A



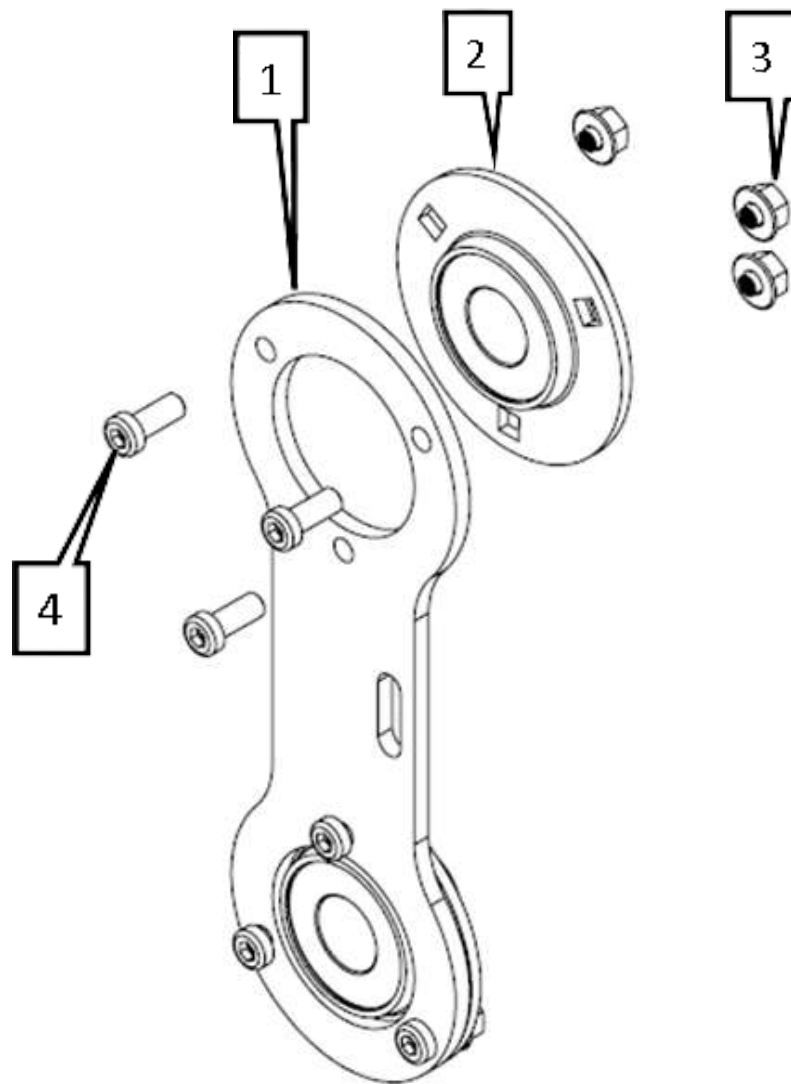
No.	Part No.	Description	5-150	6-150	
			MAX	HDX	MAX
1	02-81403	Angled Bearing Support Plate	1	1	1
2	06-24550	M8 x 20 Socket Cap Screw	9	9	9
3	02-26057	Bearing SLFE25C99 With Housing	3	3	3
4	06-95773	M8 Flange Nut	9	9	9

Bearing Support B



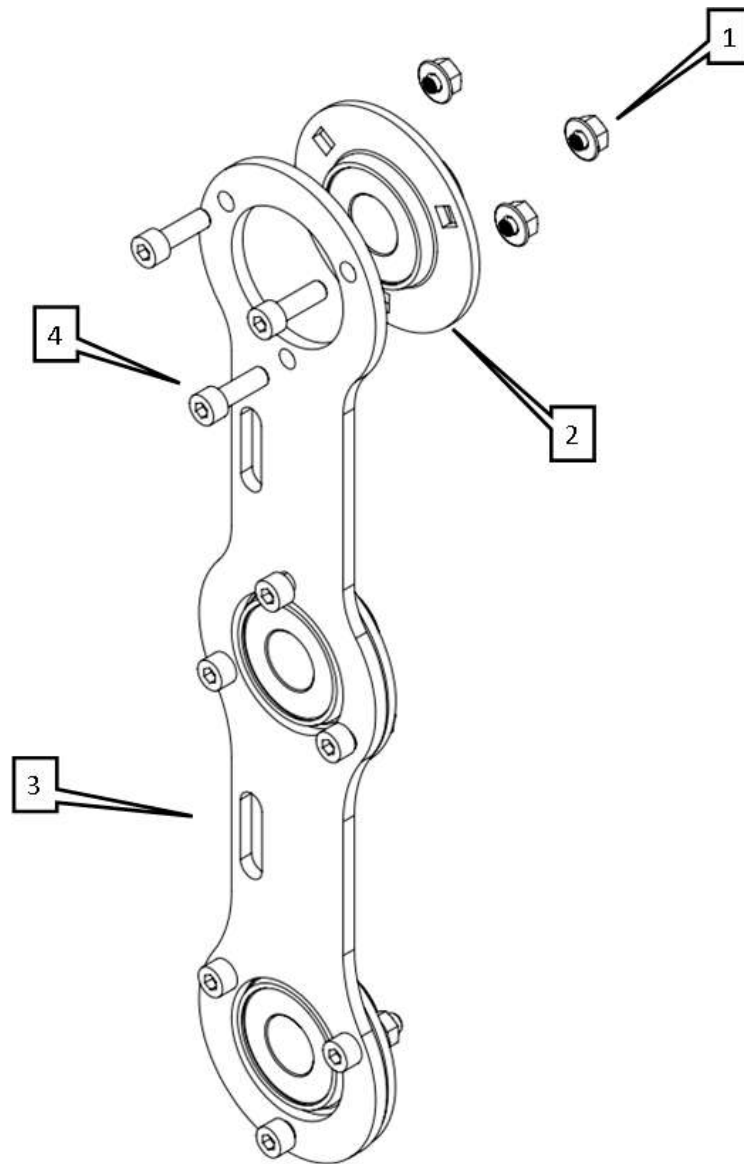
No.	Part No.	Description	5-150		
			MAX	HDX	MAX
1	02-55196	Bearing Support Plate	1	1	1
2	02-26057	Bearing SLFE25C99 With Housing	2	2	2
3	06-95773	M8 Flange Nut	6	6	6
4	06-24550	M8 x 20 Socket Cap Screw	6	6	6

Bearing Support C



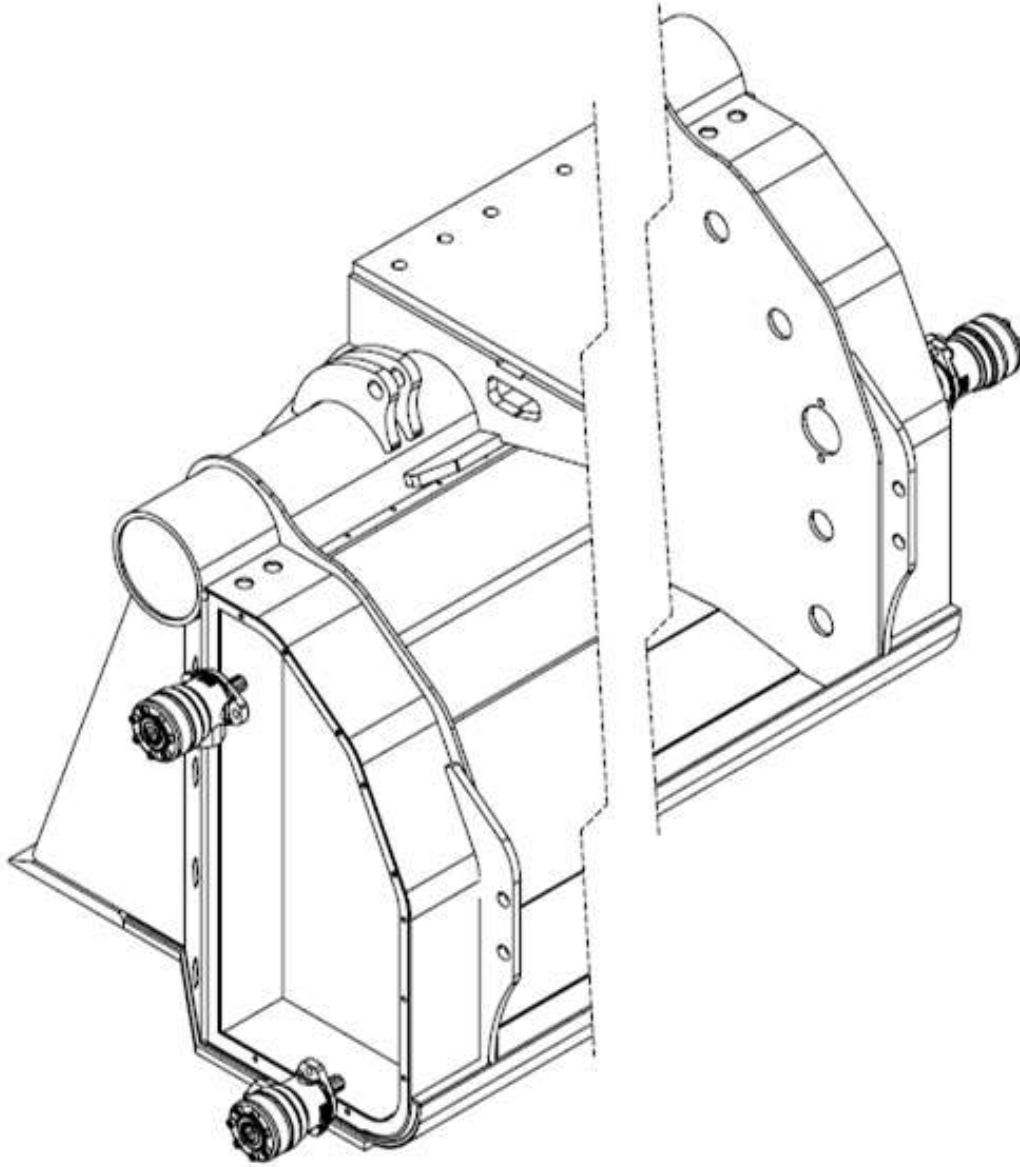
No.	Part No.	Description	5-150
			MAX
1	02-55196	Bearing Support Plate	1
2	02-26057	Bearing SLFE25C99 With Housing	2
3	06-95773	M8 Flange Nut	6
4	06-24550	M8 x 20 Socket Cap Screw	6

Bearing Support D

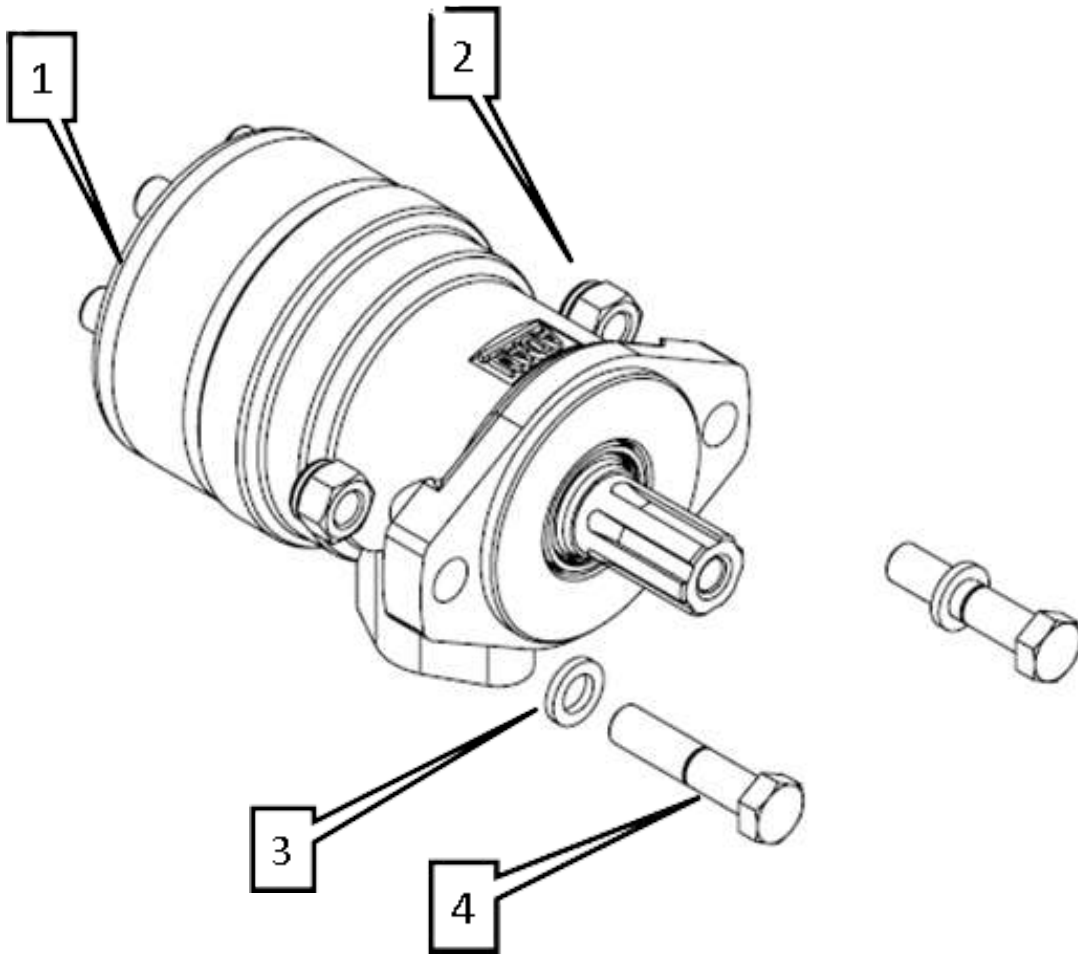


No.	Part No.	Description	6-150	
			HDX	MAX
1	06-95773	M8 Flange Nut	9	9
2	02-26057	Bearing SLFE25C99 With Housing	3	3
3	06-24550	M8 x 20 Socket Cap Screw	9	9
4	02-20139	Straight Bearing Support Plate	1	1

Motor Placement



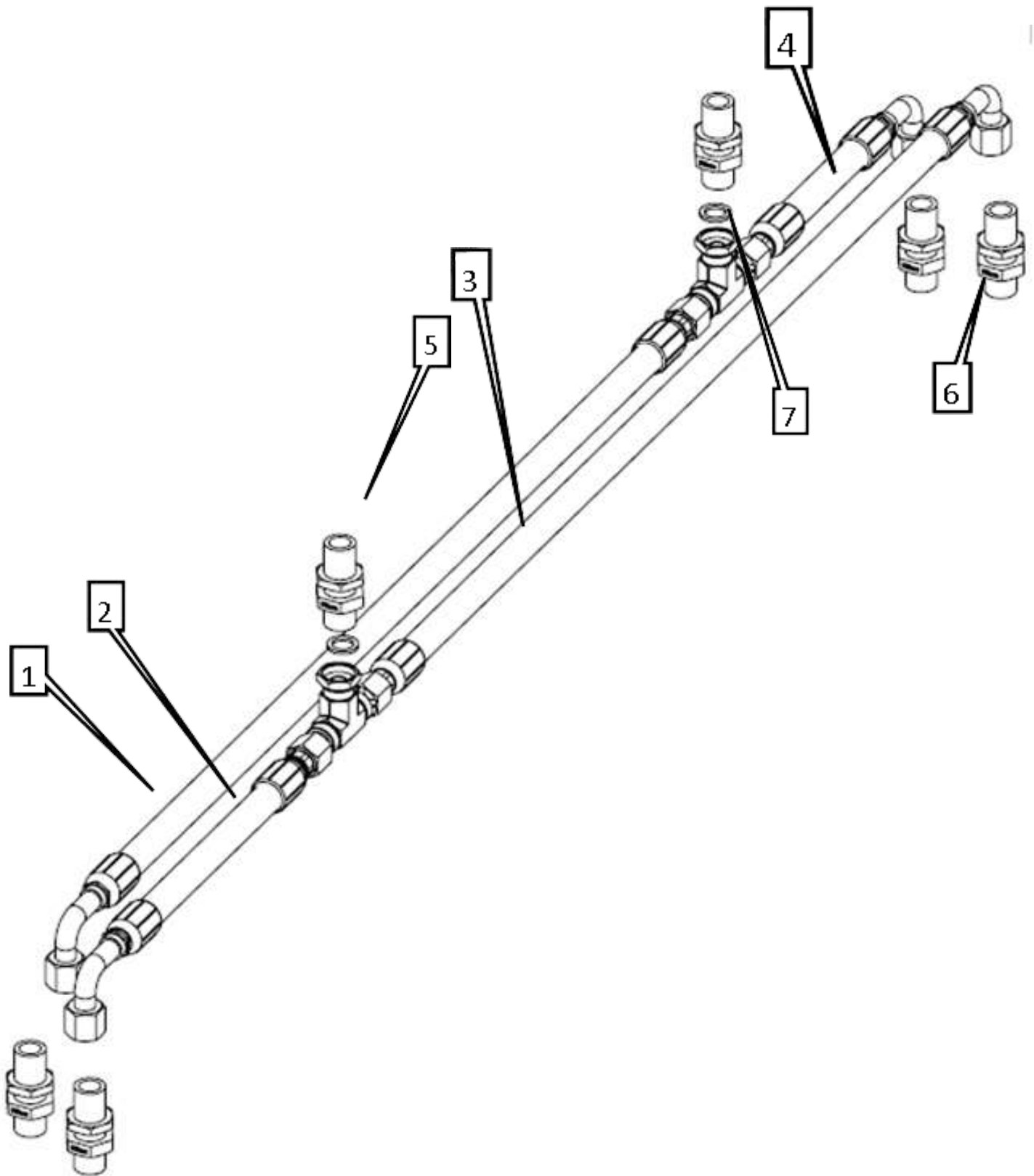
Motor Assembly



No.	Part No.	Description	5-150			6-150	
			MAX	HDX	MAX	HDX	MAX
1	04-74319	MR Motor 160CC 6B Shaft HP Shaft Seal	3	3	3		
2	06-21695	M12 Nyloc Nut	6	6	6		
3	06-85970	M12 Form A Flat Washer	6	6	6		
4	06-97778	M12 x 50mm Hexagon Bolts	6	6	6		

This page has been left
intentionally blank.

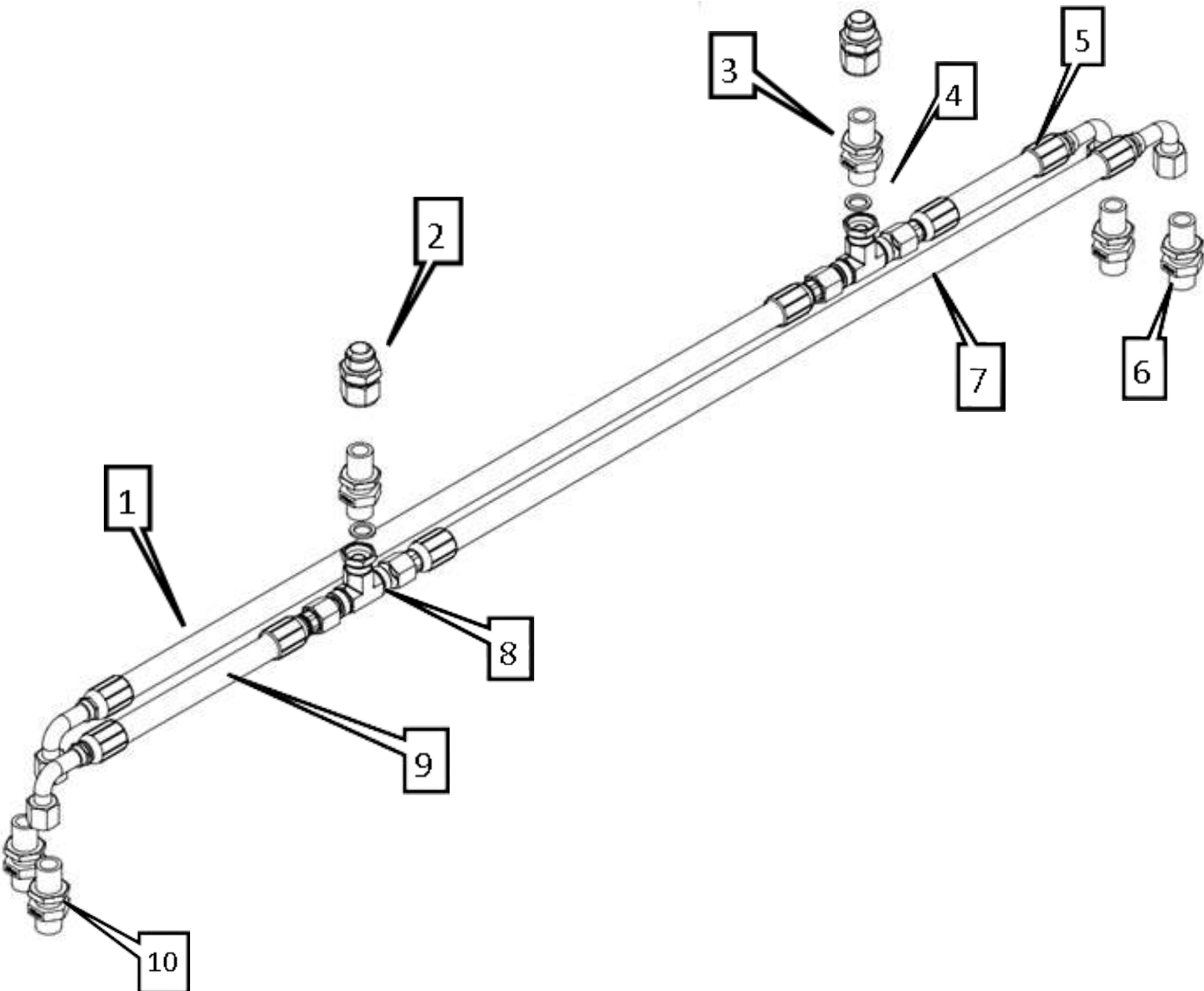
Crossover Hose Group



No.	Part No.	Description	5-150	6-150	
			MAX	HDX	MAX
1	04-65534	Hose	1	1	1
2	04-71074	Hose	1	1	1
3	04-55391	Hose	1	1	1
4	04-21965	Hose	1	1	1
5	04-42954	Bulkhead Fitting 1" BSP	2	2	2
6	--	Please see Hose Group A diagram - page 46	--	--	--
7	04-17613	Bonded Seal 1"	2	2	2
8	04-87882	Tee Fitting F-F-F BSP 1"	2	2	2
9	--	Please see Hose Group B - page 47	--	--	--

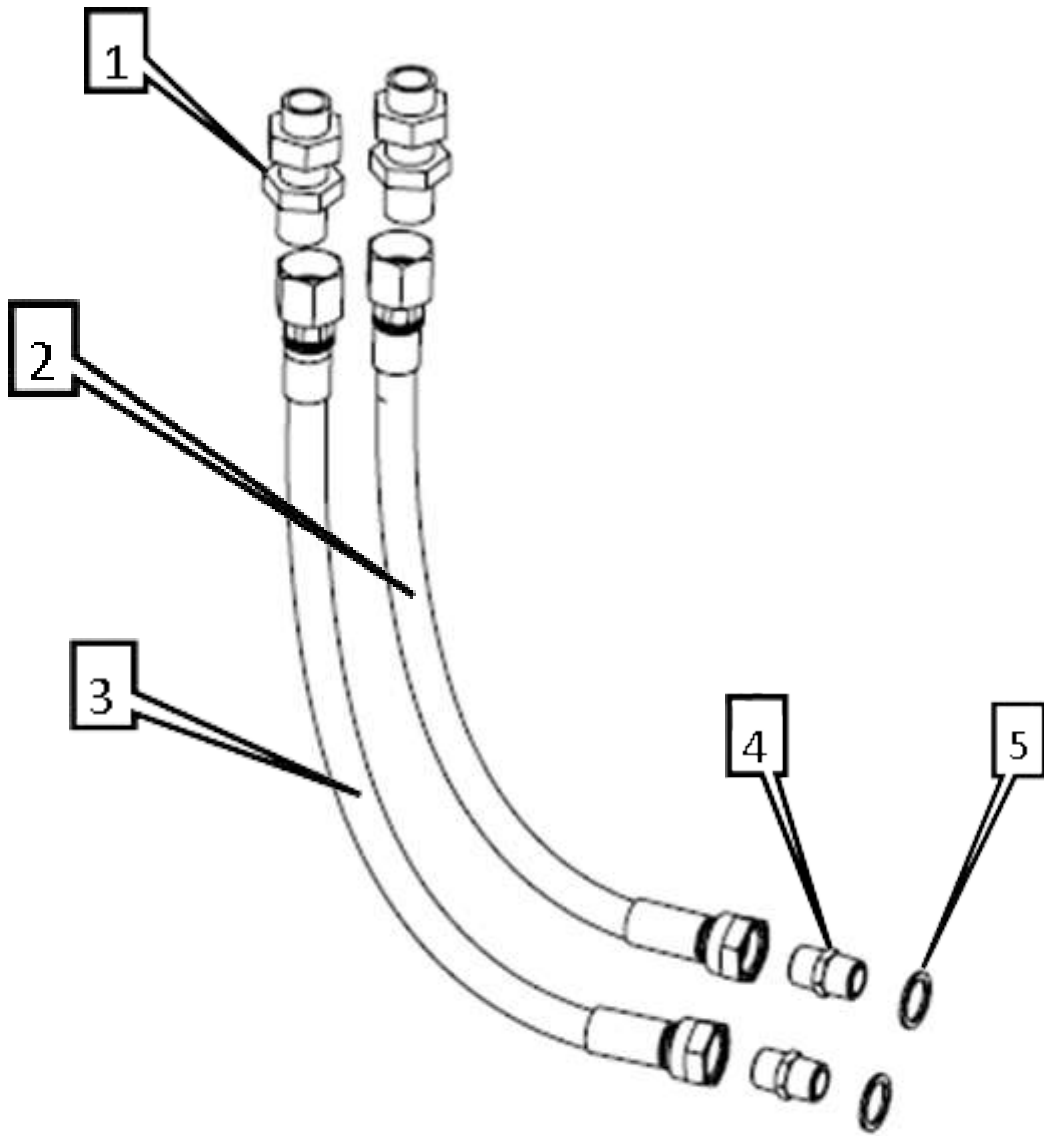
Crossover Hose Group - JIC

USA & Canada Only



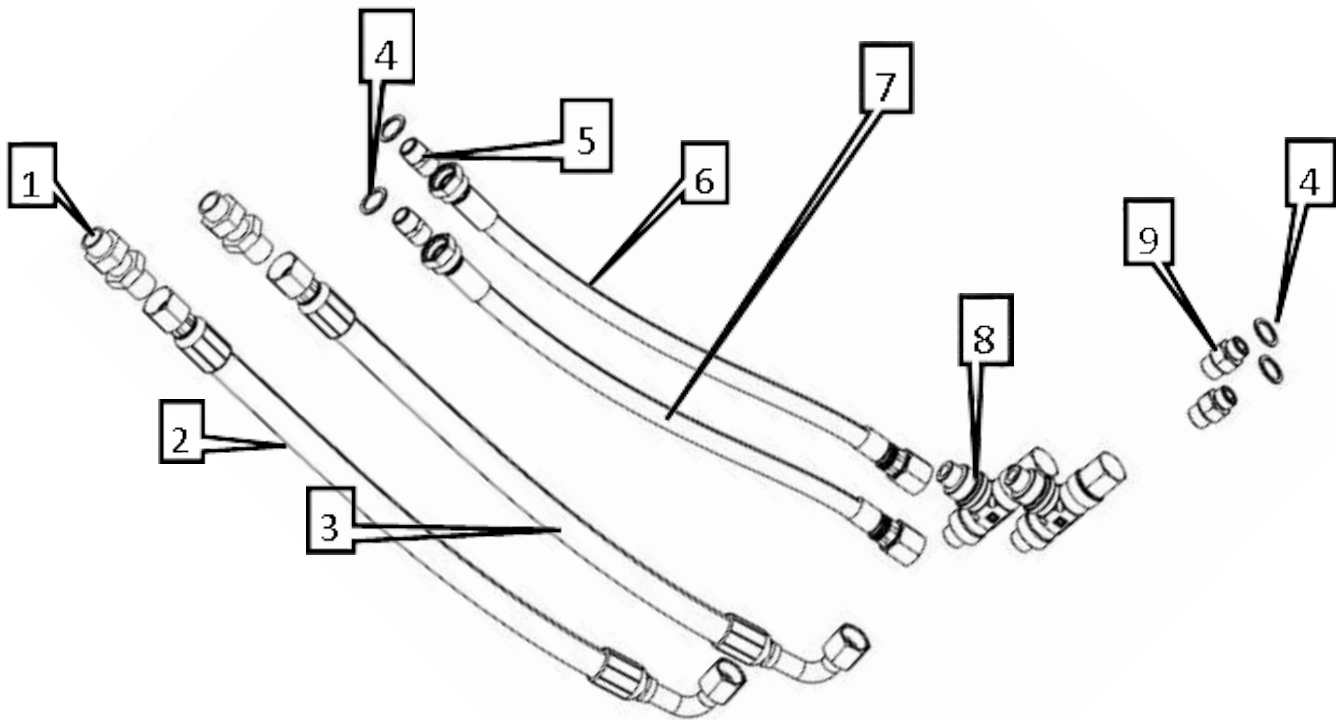
No.	Part No.	Description	5-150	6-150	
			MAX	HDX	MAX
1	04-65534	Hose	1	1	1
2	04-96125	1" BSP F- 1 5/16 JIC M adaptor	2	2	2
3	04-42954	Bulkhead Fitting 1" BSP	2	2	2
4	04-17613	Bonded Seal 1"	2	2	2
5	04-21965	Hose	1	1	1
6	--	Please see Hose Group A diagram - page 46	--	--	--
7	04-55391	Hose	1	1	1
8	04-87882	Tee Fitting F-F-F BSP 1"	2	2	2
9	04-71074	Hose	1	1	1
10	--	Please see Hose Group B Diagram - page 47	--	--	--

Hose Group A



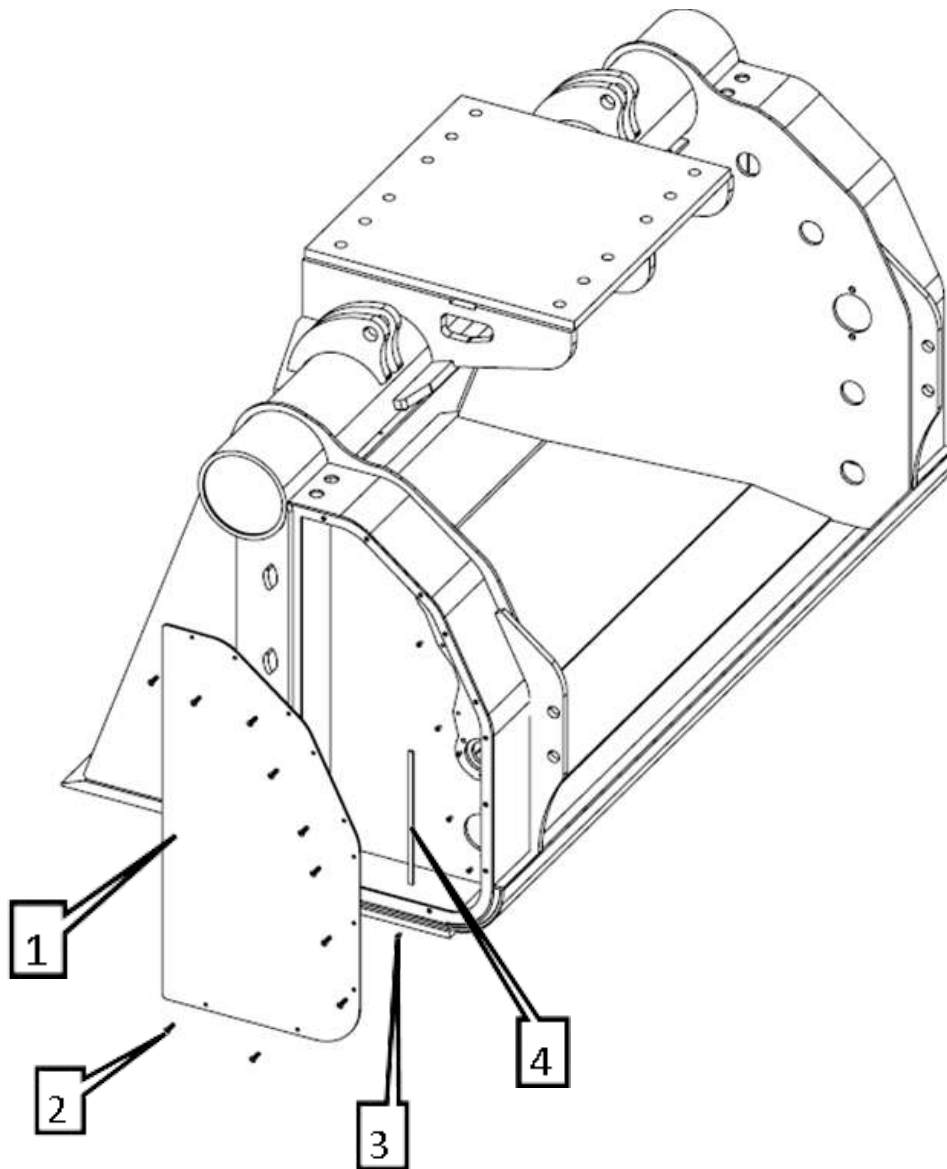
No.	Part No.	Description	5-150		6-150	
			MAX	HDX	MAX	MAX
1	04-36833	Bulkhead Fitting 3/4" BSP	2	2	2	2
2	04-42188	Hose	1	1	1	1
3	04-76783	Hose	1	1	1	1
4	04-80534	1/2"M - 1/2"M BSP Adaptor	2	2	2	2
5	04-46759	Bonded Seal 1/2"	2	2	2	2

Hose Group B



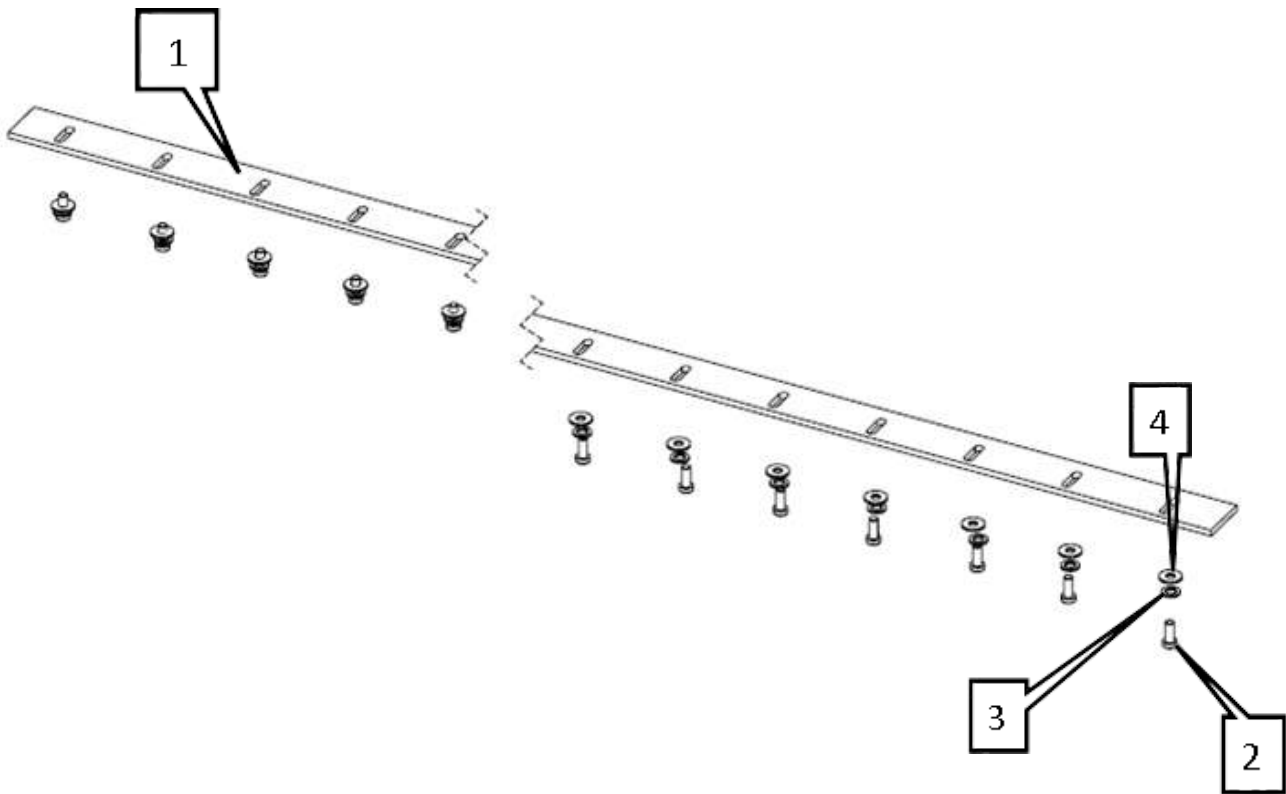
No.	Part No.	Description	5-150			6-150		
			MAX	HDX	MAX	MAX	HDX	MAX
1	04-36833	Bulkhead Fitting 3/4" BSP	2	2	2			
2	04-83379	Hose	1	1	1			
3	04-23514	Hose	1	1	1			
4	04-46759	Bonded Seal 1/2"	4	4	4			
5	04-80534	1/2"M - 1/2"M BSP Adaptor	2	2	2			
6	04-73756	Hose	1	1	1			
7	04-66626	Hose	1	1	1			
8	04-68802	Tee Fitting F-M-M 3/4" BSP	2	2	2			
9	04-27713	3/4"M BSP - 1/2"M BSP Adaptor	2	2	2			

Door Group



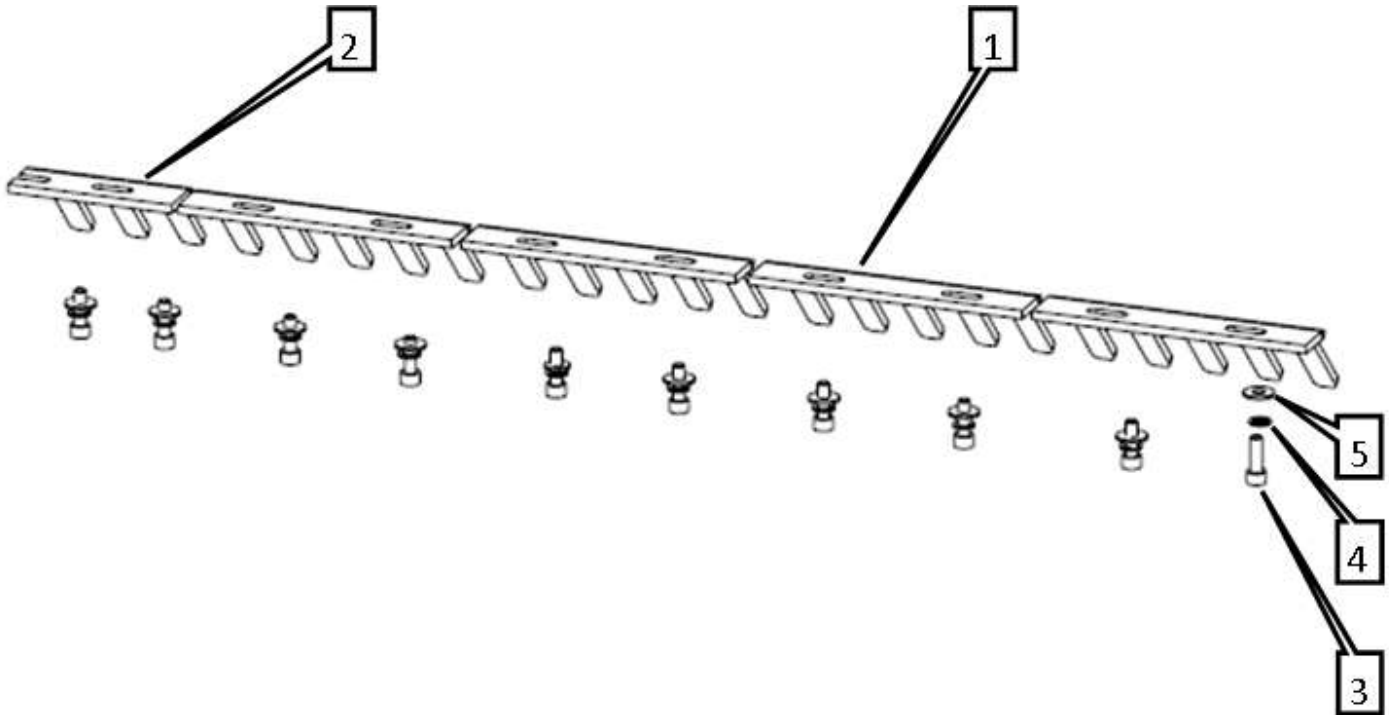
No.	Part No.	Description	5-150			6-150	
			MAX	HDX	MAX		
1	01-96098	Rotor Door Cover L	1	1	1		
1	01-71895	Rotor Door Cover R	1	1	1		
2	06-57851	M6 x 25mm Socket Countersink Screw	20	20	20		
4	06-29369	M6 Nut Insert	20	20	20		
5	07-89732	Self Adhesive Seal (1 Meter)	6	6	6		

Stripper Plate



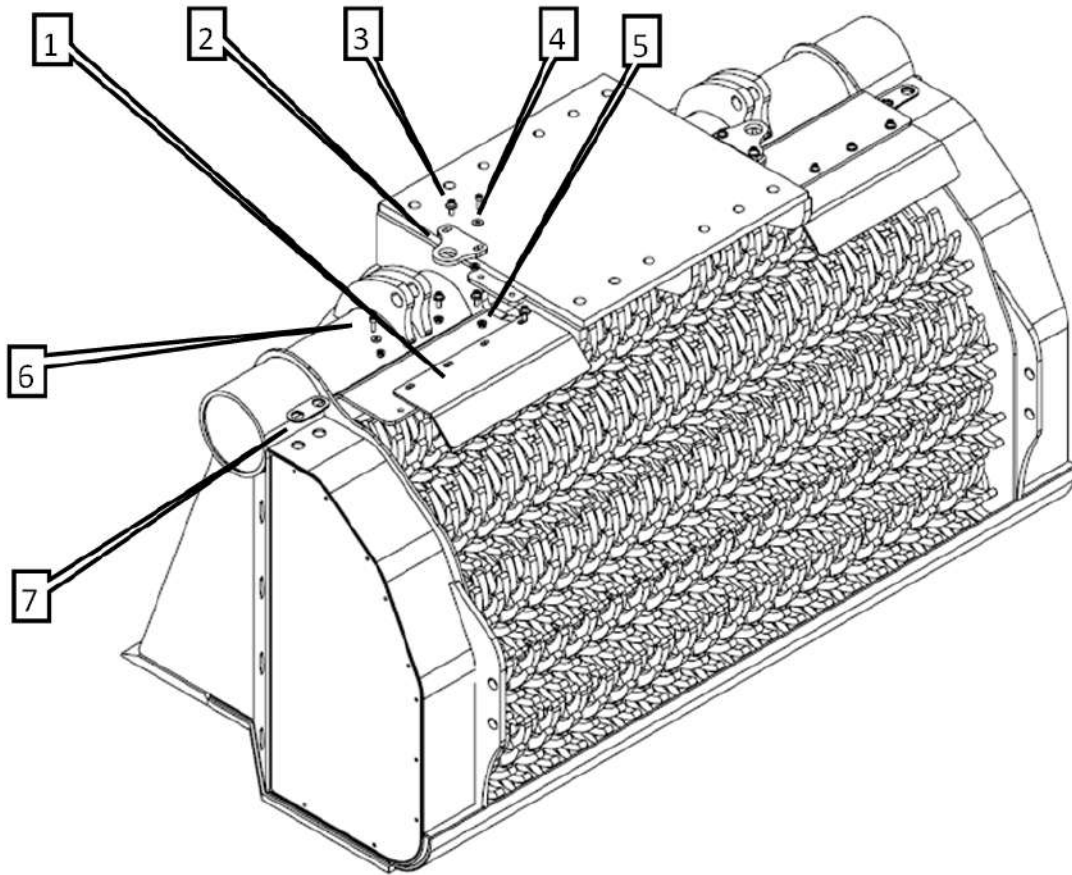
No.	Part No.	Description	5-150	6-150	
			MAX	HDX	MAX
1	05-62817	Stripper Plate	1	1	1
2	06-24550	M8 x 20 Socket Cap Screw	16	16	16
3	06-66588	M8 Spring Washer	16	16	16
4	06-44950	M8 Flat Washer	16	16	16

Comb



No.	Part No	Description	5-150	6-150	
			MAX	HDX	MAX
1	05-76319	Long Comb	7	7	7
2	05-70432	Short Comb (Right Hand Split)	1	1	1
3	06-24550	M8 x 20 Socket Cap Screw	16	16	16
4	06-66588	M8 Spring Washer	16	16	16
5	06-44950	M8 Flat Washer	16	16	16

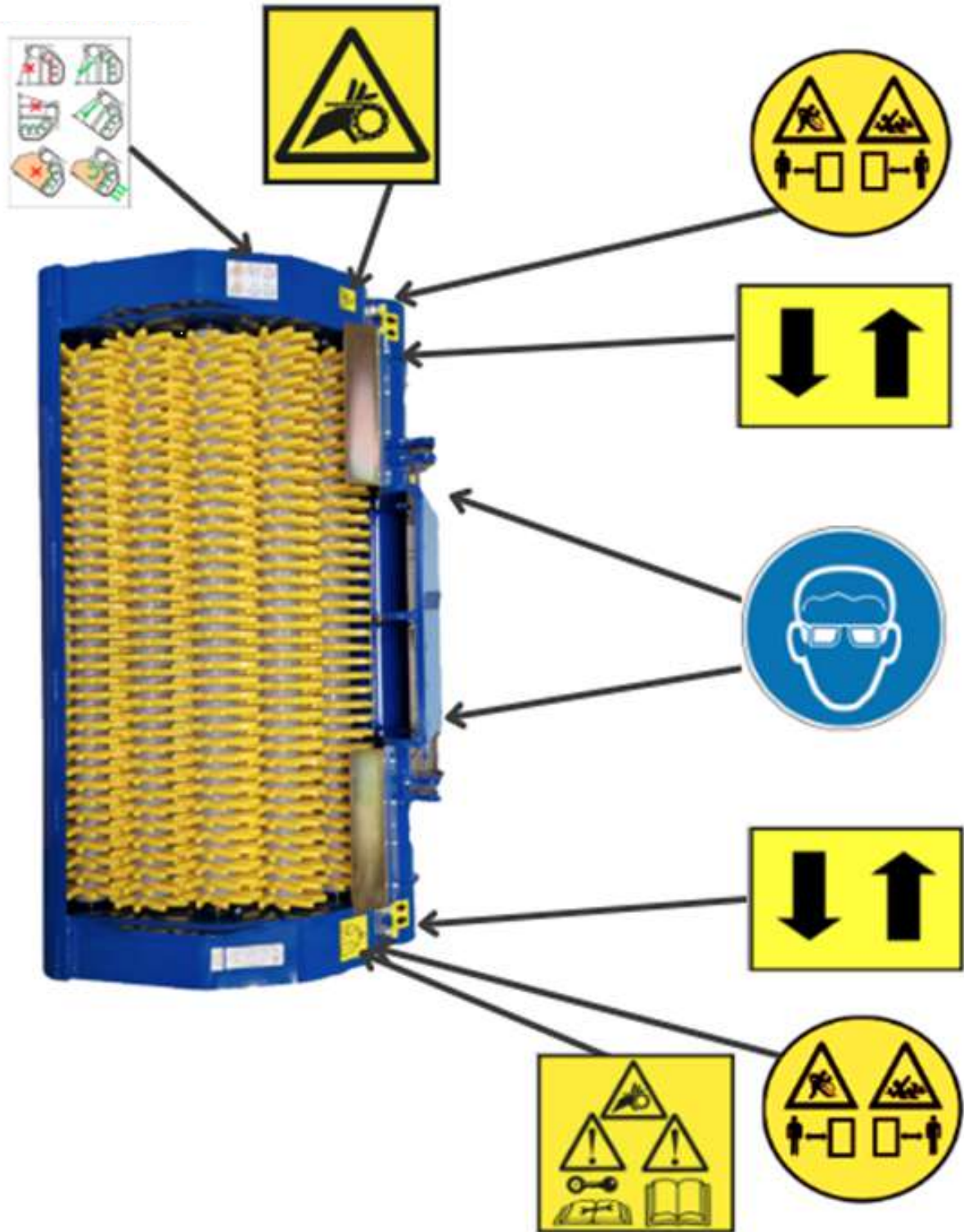
Accessories



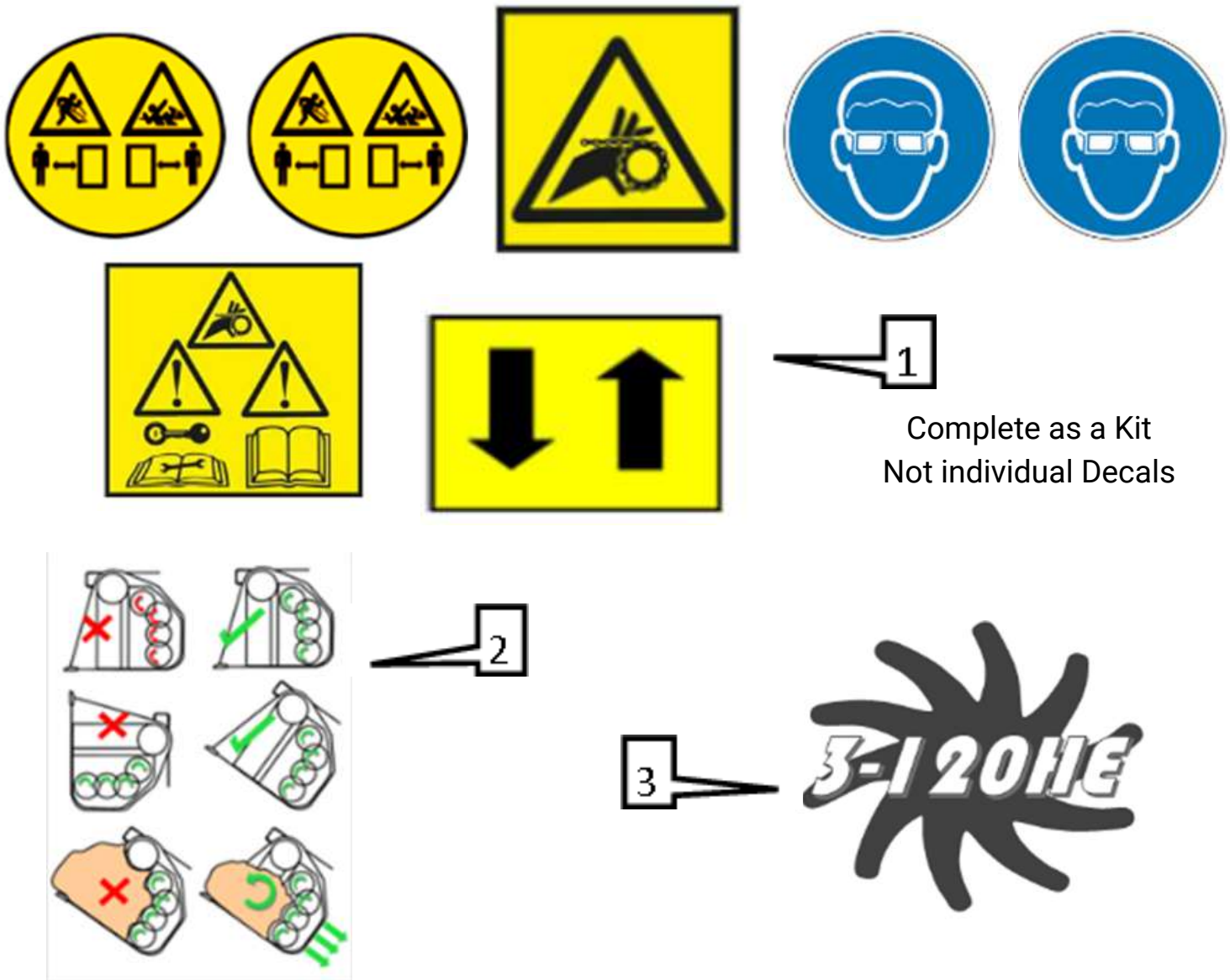
No.	Part No.	Description	5-150		6-150	
			MAX	HDX	MAX	
1	05-92216	Stone Guard	2	2	2	
2	01-33950	Hose Ear	2	2	2	
3	06-38462	M10 X 35mm Socket Cap Screw	4	4	4	
4	06-83734	Flat Washer S10	20	20	20	
5	06-18546	M10 Nyloc Nut	8	8	8	
6	06-81127	M10 x 30 Socket Cap Screw	8	8	8	
7	01-20740	Hose Plate	2	2	2	

Safety Decals

OVERVIEW



Decals



No.	Part No.	Description	5-150			6-150	
			MAX	HDX	MAX	HDX	MAX
1	07-65717	Safety Decal Kit Gyru-Star 5 & 6 Rotor Models	1	1	1		
2	07-50421	Advisory Decal one size	1	1	1		
3	07-54981	Model Decal 5-150MAX	2	--	--		
4	07-36942	Model Decal 6-150HDX	--	2	--		
5	07-96601	Model Decal 6-150 MAX	--	--			2



Gyru-Star Compact Screening Systems are manufactured by



Wheatway Solutions Ltd
B3 Brearley, Baird Road
Waterwells Business Park
Gloucester
GL2 2AF
England

www.gyru-star.com www.wheatway.com

This document was issued on 31st January 2023

Copyright © 2023 Wheatway Solutions Ltd - All rights reserved