

Tine Harrow 3 Point Lift

Parts List and Assembly Instructions



OGDEN

Metalworks, Inc.

PO Box 218
Ogden, IL 61843
217-582-2552

Fax 217-582-2746
www.ogdenmetalworks.com

Safety Instructions

CAUTION!



This equipment should never be operated by anyone who is not familiar with the product and tractor and has not read the instruction manual.

Only use the proper size and strength hitch pins provided with the tractor. Failure to heed this caution could result in severe personal injury or fatality from drawbar striking operator.

Lightweight tractors may require front weights when using Lift on hilly ground. Failure to heed this caution could result in severe personal injury or fatality from tipping tractor.

Do not replace rear chain with lighter gauge chain. Chain breaking when Harrow is in lifted position could result in Harrow falling, causing injury to bystanders.

Do not use Lift for items other than Harrow. Failure to heed this caution could result in severe injury to bystander being hit by bending or fractured tubing or material being lifted.

Be certain everyone is clear when lifting or lowering Harrow. Failure to heed this caution could result in severe injury or fatality.

Do not stand under Harrow when Harrow is in the raised position. Failure to heed this caution could result in severe injury or fatality.

Be certain everyone is clear of Harrow and Lift when making turns. Harrow Lift swinging laterally could cause severe injury to bystanders.

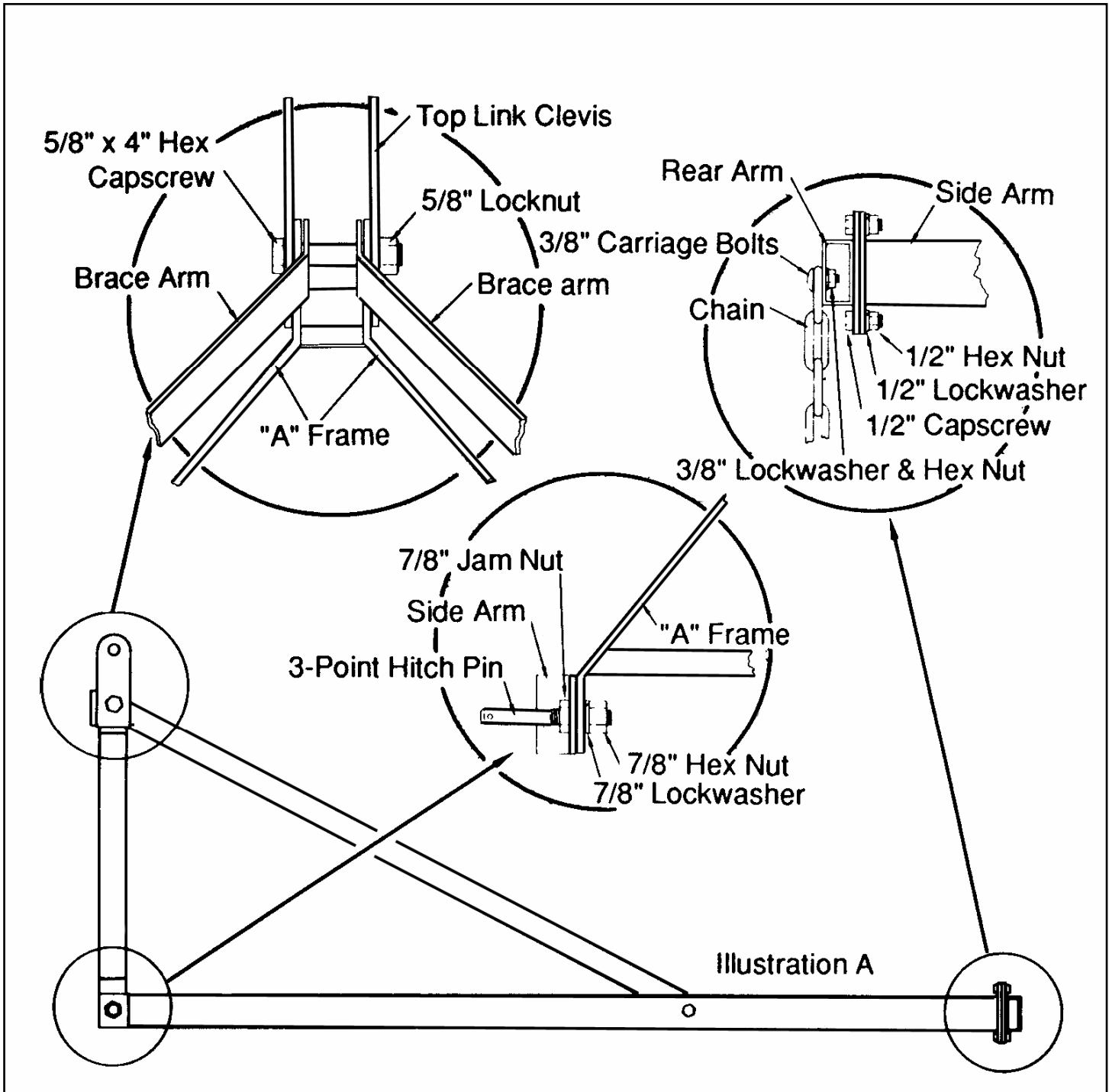
Parts List

<i>Description</i>	<i>Harrow Sizes</i>	<i>Part Number</i>	<i>Approx. Wt. Lbs.</i>
Side Arm	6' or 8'	03-L8	25
	10'	03-L10	27
	12'	03-L12	35
	14'	03-L14	36
"A" Frame	All models	03-SF	40
Top Link Clevis	All models	03-CL	3
Hitch Pin	All models	02-HP	2
Rear Lift Arm	6'-8'	03-A8	16
	10'	03-A10	20
	12'	03-A12	26
	14'	03-A14	30
Lift Chain	All models	02-LC	1
Brace Arm	All models	03-BA	3
Rear Brace	12'	03-RB12	3
	14'	03-RB14	3

Hardware

<i>Description</i>	<i>LN6/8</i>	<i>LN10</i>	<i>LN12</i>	<i>LN14</i>
3 Pt. Hitch Pin	2	2	2	2
3/8" x 1 1/2" Carriage Bolt	2	2	2	2
3/8" x 2 1/2" Carriage Bolt	4	5	9	9
3/8" Lockwasher	6	7	11	11
3/8" Hex Nut	6	7	11	11
3/8" x 2 1/2" Hex Capscrew			2	2
3/8" Flatwasher			2	2
1/2" x 1 1/2" Hex Capscrew	4	4	4	4
1/2" x 2 1/2" Hex Capscrew	2	2	2	2
1/2" Flatwasher	2	2	2	2
1/2" Lockwasher	4	4	4	4
1/2" Hex Nut	4	4	4	4
1/2" Locknut	2	2	2	2
5/8" x 4" Hex Capscrew	1	1	1	1
5/8" Hex Locknut	1	1	1	1
Lift Chain	6	7	9	9

Tine Harrow 3 Point Lift Parts Drawing



Assembly Instructions

Lay Side Arms, Rear Arm and “A” Frame on ground. Bolt the Rear Lift Arm to the rear end of Side Arms with four $\frac{1}{2}$ ” x $1\frac{1}{2}$ ” hex capscrews, lockwashers and hex nuts. Do not tighten at this time.

Bolt the front end of the Side Arms to the “A” Frame using 3 Point Hitch Pins. The tabs of the Side Arms go on the outside of the “A” Frame. *See illustration A.*

Bolt the Top Link Clevis, welded tab forward, and Brace Arms to “A” Frame using $\frac{5}{8}$ ” x 4” hex capscrew and locknut. The Brace Arms go on the inside of the “A” Frame. *See illustration A.* The Locknut must be loose enough to allow the Clevis to swivel.

Bolt the Brace Arms to the outside of the Side Arms using $\frac{1}{2}$ ” x $2\frac{1}{2}$ ” hex capscrews, flatwashers and locknuts. Do not tighten at this time. On 12’ and 14’ models, bolt Rear Braces to Side Arms and Rear Arms as shown below using two $\frac{3}{8}$ ” x $2\frac{1}{2}$ ” hex capscrews, lockwashers and hex nuts. *See pictures below.*

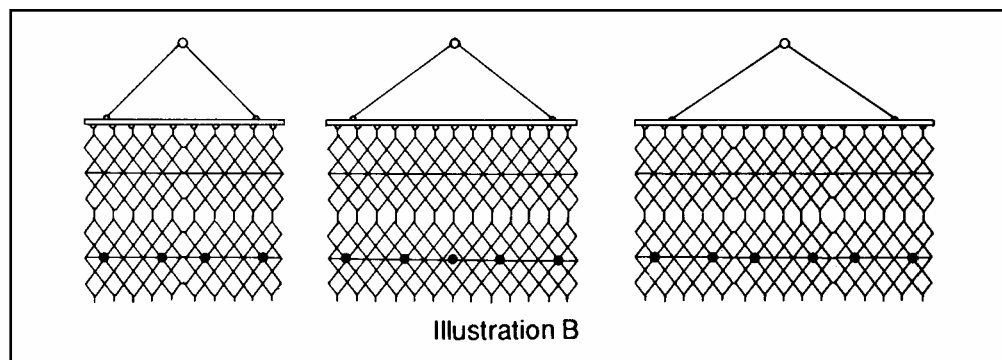


Tighten all bolts and nuts to secure the Lift for use.

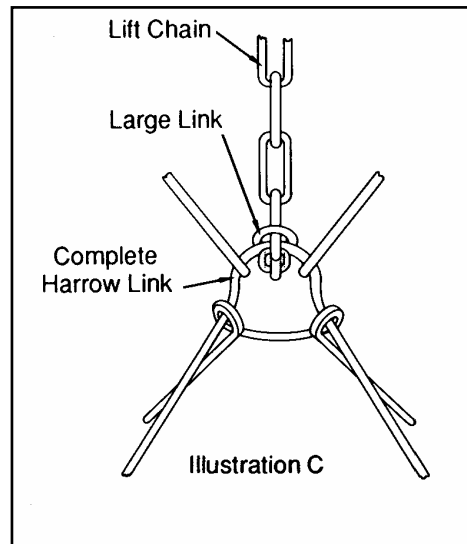
Attach the Lift to the 3 point hitch of the tractor.

Assemble the Harrow according to the Harrow assembly instructions, and attach the Harrow Drawbar to the tractor drawbar. The Harrow may be positioned too far back if the Drawbar linkage is too long. If necessary shorten the linkage.

Lower the Lift over the Harrow to the approximately working position. Attach the Lift Chain approximately as indicated in illustration B.



The Lift Chain has a large link on one end. Loop the small end of the Lift Chain through the Harrow and pull it through the large loop, pulling tight. *See illustration C.*



Attach the Lift Chain to the rear bar using 3/8" x 2 1/2" carriage bolts, lockwashers and hex nuts. Use the two 3/8" x 1 1/2" carriage bolts on the outside holes. Put the bolt through the chain link so that the Harrow lifts completely off the ground when the Lift is raised.

Raise and lower the Lift to assure chains are adjusted properly. It may be necessary to adjust the Chains forward or backward on the Harrow to keep Harrow hooked properly when in the raised position. In the working position the Harrow should pull only from the tractor drawbar. The 3 Point Lift is only for transport.



Optional 3PDRAW Drawbar

The optional Ogden 3PDRAW Drawbar eliminates the need for the Harrow Drawbar Linkage that normally attaches to the tractor drawbar and pulls the Harrow. The 3PDRAW Drawbar attaches to the inside of the “A” Frame by means of the 3 point hitch pins. By attaching the Ogden 3PDRAW to the 3 Point Lift “A” Frame, and then attaching short chains to the Harrow Drawbar, the linkage to the tractor drawbar is eliminated. The 3 Point Lift can be removed easier from the tractor because it is now only connected to the 3 point hitch. The Ogden 3PDRAW Drawbar will operate with any model of Ogden 3 Point Lift.



