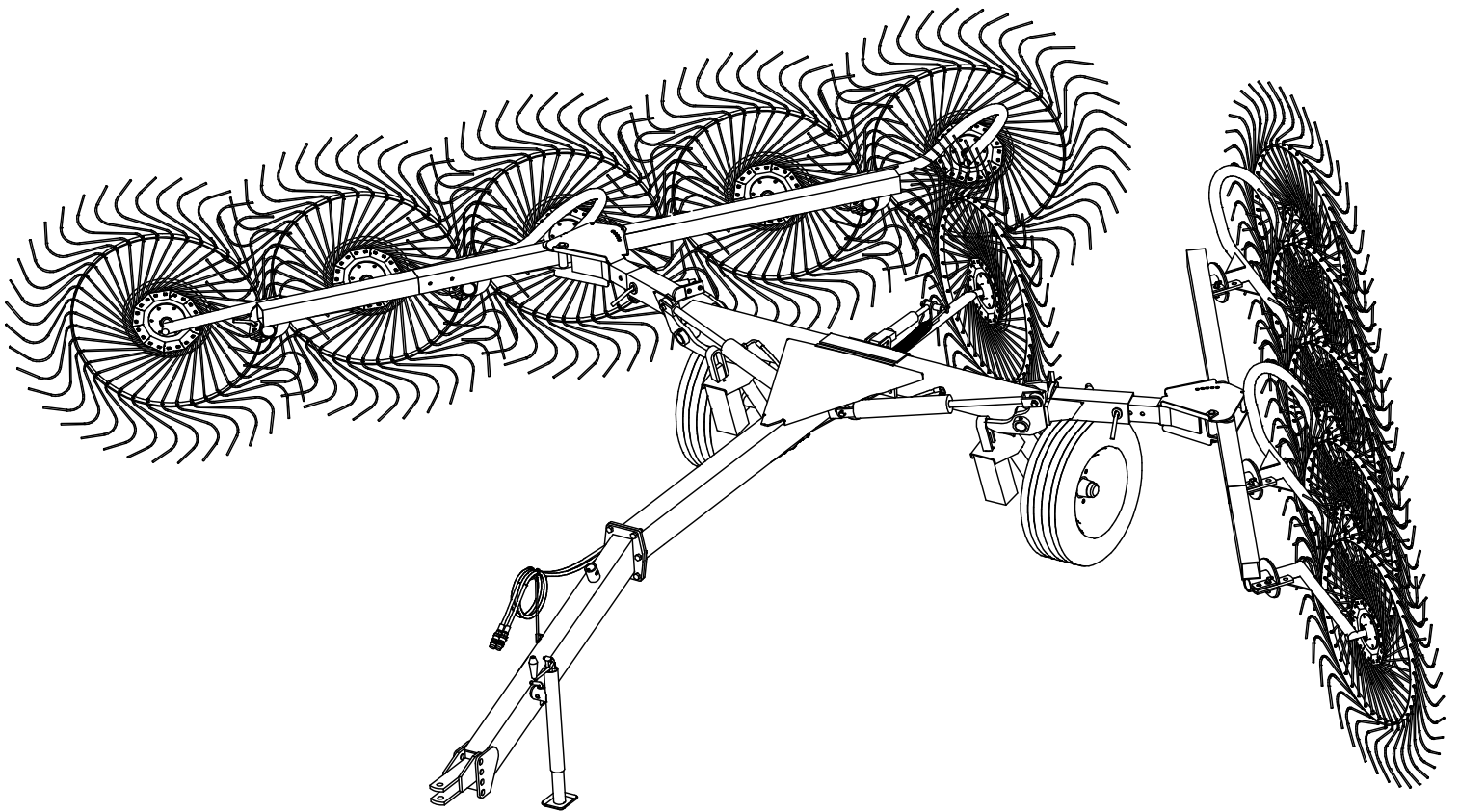


AGRICULTURAL MACHINERY
sitrex®
Spa

ASSEMBLY
USE AND MAINTENANCE
SPARE PARTS LIST

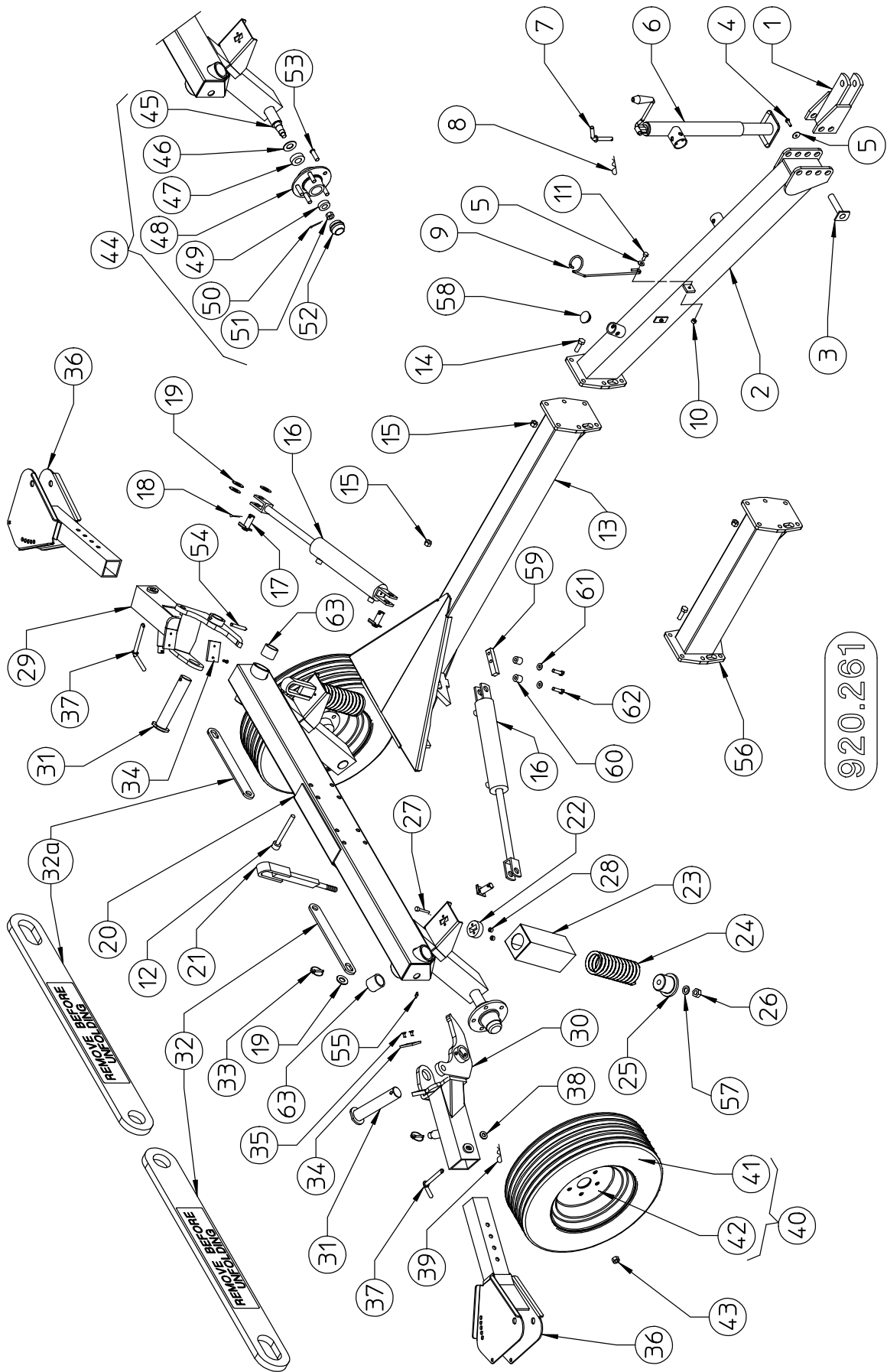


QR / 8-10-12

04/2009

SPARE PARTS LIST

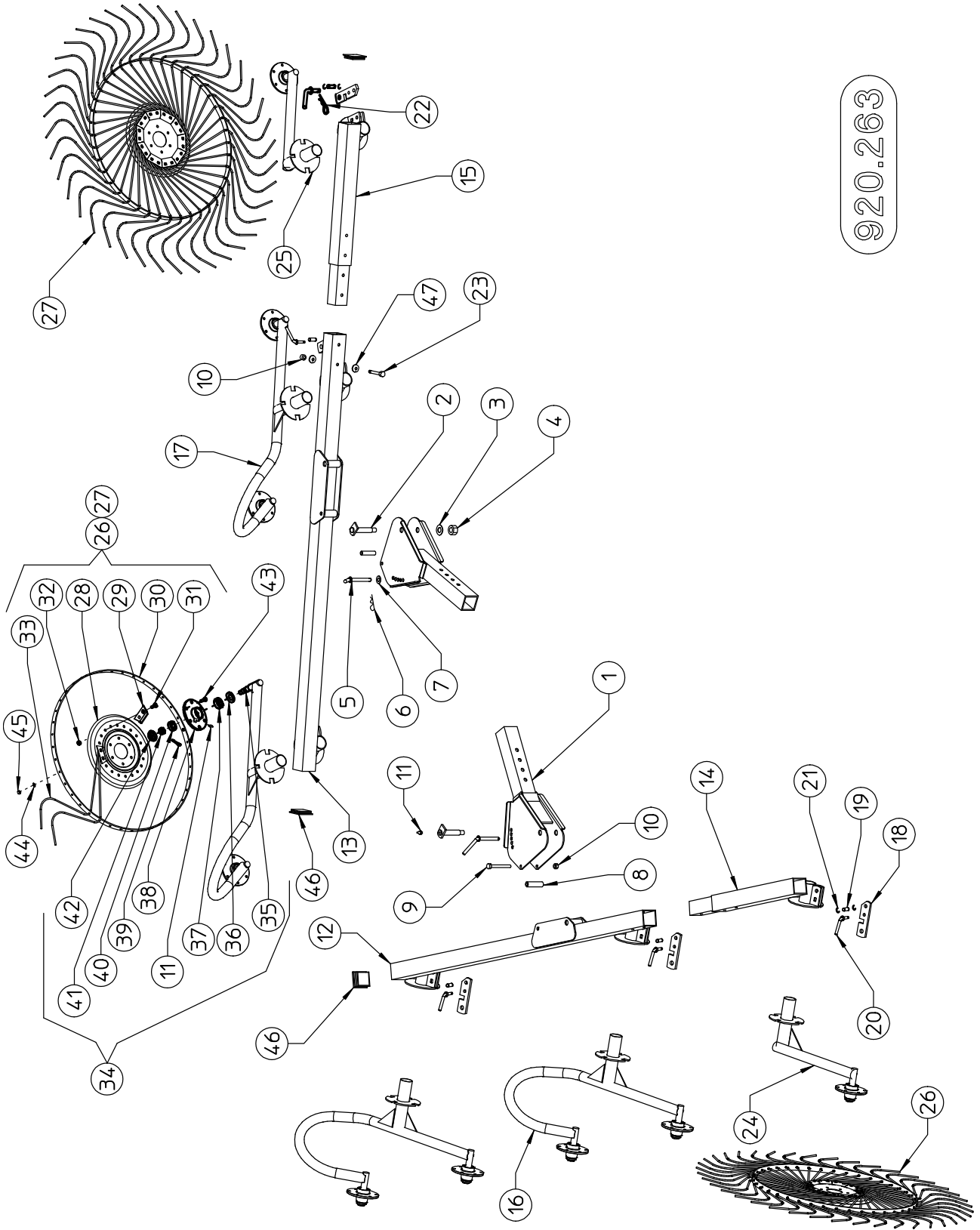
TABLE PART NO 920.261 QR/8-10-12



920.261

| TABLE PART NO 920.261 | | | | |
|-----------------------|------|---------|----------------------------------|-------------------|
| ITEM | Q.ty | PART NO | DESCRIPTION | NOTE |
| 1 | 1 | 230.370 | BRACKET | |
| 2 | 1 | 230.296 | DRAWBAR | |
| 3 | 2 | 200.828 | PIN | |
| 4 | 2 | 600.770 | SCREW M12 X 20 DIN 933 8.8 | |
| 5 | 3 | 600.092 | WASHER Ø12x36 | |
| 6 | 1 | 220.197 | PARKING STAND | |
| 7 | 1 | 200.222 | PIN | |
| 8 | 1 | 600.019 | SPLIT PIN BC3 | |
| 9 | 1 | 110.105 | SUPPORT | |
| 10 | 1 | 600.077 | NUT M12 DIN 980 | |
| 11 | 1 | 600.616 | SCREW M12 X 35 DIN 933 8.8 | |
| 12 | 8 | 600.595 | SCREW M16 X 140 DIN 931 8.8 | |
| 13 | 1 | 230.297 | DRAWBAR | |
| 14 | 6* | 600.176 | SCREW M16 X 50 DIN 931 8.8 | *For QR12 Q.ty 12 |
| 15 | 14* | 600.080 | NUT M16 DIN 980 | *For QR12 Q.ty 20 |
| 16 | 2 | 230.413 | CYLINDER | |
| 17 | 4 | 230.368 | PIN | |
| 18 | 4 | 600.038 | SPLIT PIN D 6 X 35 DIN 94 3.6 | |
| 19 | 16 | 600.336 | WASHER Ø25 DIN 125A | |
| 20 | 1 | 230.298 | CART FRAME | |
| 21 | 2 | 230.299 | TIE ROD | |
| 22 | 2 | 230.333 | SLIDING | |
| 23 | 2 | 230.369 | HOOD | |
| 24 | 2 | 230.300 | SPRING | |
| 25 | 2 | 230.310 | BUSH | |
| 26 | 2 | 600.717 | NUT M20 DIN 980 | |
| 27 | 4 | 600.551 | SCREW M8 X 35 DIN 931 8.8 | |
| 28 | 4 | 600.076 | NUT M8 DIN 980 | |
| 29 | 1 | 230.303 | L.H. ARM | |
| 30 | 1 | 230.304 | R.H. ARM | |
| 31 | 2 | 230.319 | PIN | |
| 32 | 1 | 230.387 | RH TRANSPORT ARM WITH LABEL | |
| 32a | 1 | 230.388 | LH TRANSPORT ARM WITH LABEL | |
| 33 | 4 | 600.116 | SPRING PIN BS8 | |
| 34 | 2 | 230.360 | BLOCK | |
| 35 | 4 | 630.136 | SCREW M8 X 25 similar to DIN7991 | |
| 36 | 2 | 230.305 | ARM | |
| 37 | 2 | 230.331 | PIN | |
| 38 | 2 | 600.031 | WASHER D 17 DIN 125A | |
| 39 | 2 | 600.308 | SPLIT PIN BC4 | |
| 40 | 2 | 600.281 | TIRE ASSY | |
| 41 | 2 | 600.303 | TIRE | |
| 42 | 2 | 600.304 | RIM | |
| 43 | 10 | 600.289 | NUT M16 X 1,5 | |
| 44 | 2 | 215.960 | HUB ASSY | |
| 45 | 2 | 215.959 | HUB PIN | |
| 46 | 2 | 600.284 | DUST COVER | |
| 47 | 2 | 600.285 | BEARING 30208 | |
| 48 | 2 | 600.286 | HUB | |
| 49 | 2 | 600.287 | BEARING 30206 | |
| 50 | 2 | 600.291 | SPLIT PIN D.4 X 40 DIN 94 3.6 | |
| 51 | 2 | 600.288 | NUT M27 X 1,5 | |
| 52 | 2 | 600.290 | CAP | |
| 53 | 10 | 610.413 | SCREW M16 X 1,5 | |
| 54 | 2 | 600.656 | SPRING PIN D.12 X 70 DIN 1481 | |
| 55 | 2 | 600.034 | GREASE NIPPLE M8 | |
| 56 | 1 | 230.367 | DRAWBAR | QR12 only |
| 57 | 2 | 600.632 | WASHER ø 21/37x3 DIN 125A | |
| 58 | 1 | 610.790 | PLUG | |
| 59 | 2 | 230.420 | PLATE | |
| 60 | 4 | 230.422 | RUBBER SPRING | |
| 61 | 4 | 600.322 | WASHER ø10.5 DIN 125A | |
| 62 | 4 | 600.439 | SCREW M10 X 45 DIN 931 | |
| 63 | 4 | 200.199 | BUSH | |

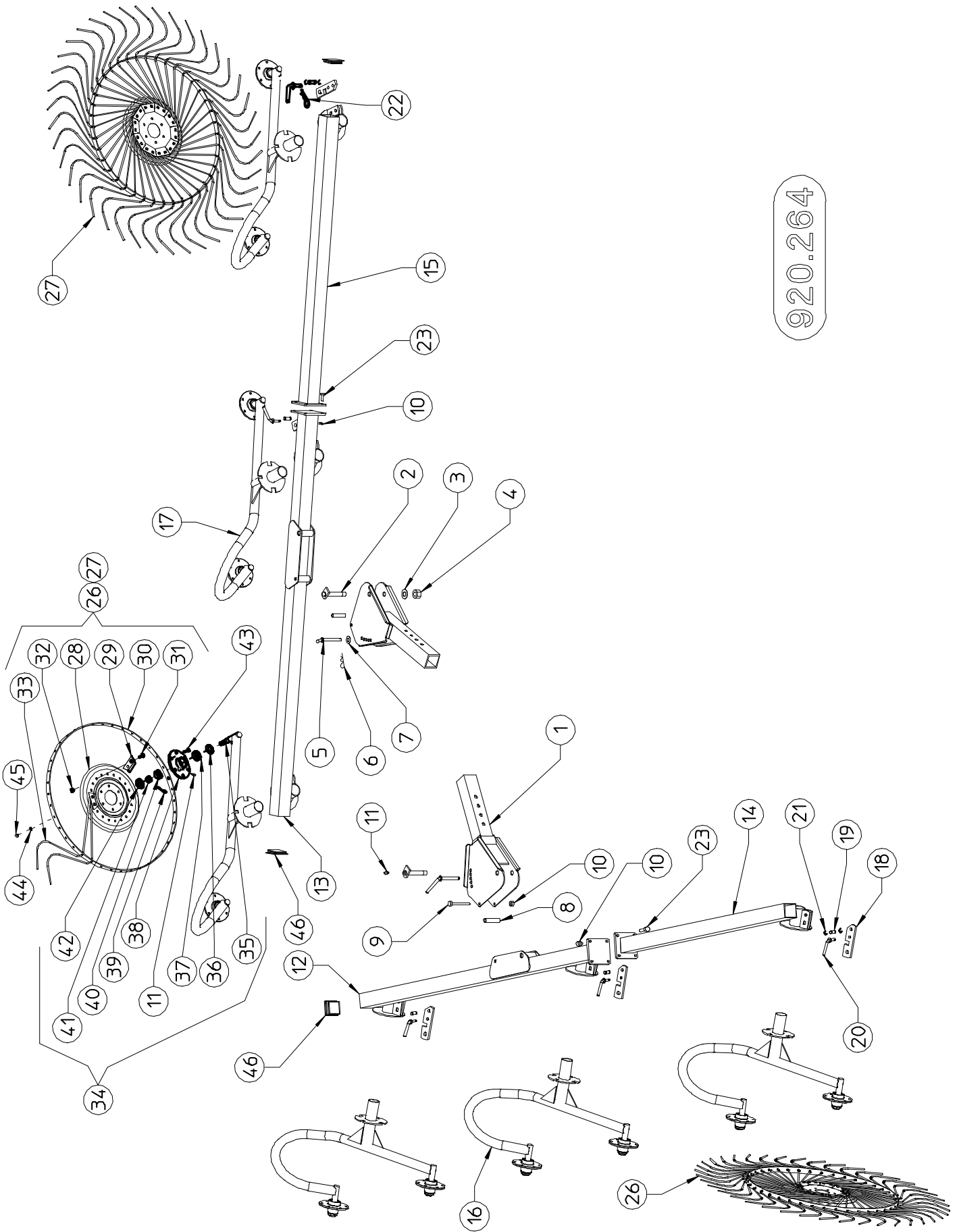
TABLE PART NO 920.263 QR/8-10



920.263

| TABLE PART NO 920.263 | | | | |
|-----------------------|------|---------|---------------------------------------|-------------------|
| ITEM | Q.ty | PART NO | DESCRIPTION | NOTE |
| 1 | 2 | 230.305 | ARM | |
| 2 | 2 | 230.329 | PIN | |
| 3 | 2 | 600.632 | WASHER Ø21 DIN 125A | |
| 4 | 2 | 600.717 | NUT M20 DIN 980 | |
| 5 | 2 | 230.330 | PIN | |
| 6 | 2 | 600.308 | SPLIT PIN BC4 | |
| 7 | 2 | 600.031 | WASHER D 17 | |
| 8 | 2 | 230.309 | BUSH | |
| 9 | 2 | 600.225 | SCREW M12 X 120 DIN 931 8.8 | |
| 10 | 6 | 600.077 | NUT M12 DIN 980 | |
| 11 | 12* | 600.034 | GREASE NIPPLE M8 | *For QR8 Q.ty 10 |
| 12 | 1 | 230.307 | MAIN PIPE R.H. | |
| 13 | 1 | 230.308 | MAIN PIPE L.H. | |
| 14 | 1* | 230.353 | PIPE R.H. | *QR10 only |
| 15 | 1* | 230.354 | PIPE L.H. | *QR10 only |
| 16 | 2 | 230.334 | WHEEL ARM R.H. | |
| 17 | 2 | 230.336 | WHEEL ARM L.H. | |
| 18 | 6* | 200.073 | LOCK DEVICE | *For QR8 Q.ty 4 |
| 19 | 6* | 200.074 | PIN | *For QR8 Q.ty 4 |
| 20 | 6* | 200.075 | PIN | *For QR8 Q.ty 4 |
| 21 | 12* | 600.023 | SNAP RING E15 DIN 471 | *For QR8 Q.ty 8 |
| 22 | 6* | 600.019 | SPLIT PIN BC3 | *For QR8 Q.ty 4 |
| 23 | 4* | 610.516 | SCREW M12 X 100 DIN 931 8.8 | *QR10 only |
| 24 | 1* | 230.335 | ARM R.H. | *QR10 only |
| 25 | 1* | 230.337 | ARM L.H. | *QR10 only |
| 26 | 5* | 210.180 | WHEEL ASSY R.H. (TINE DIA 0,276" 7mm) | *For QR8 Q.ty 4 |
| 27 | 5* | 210.181 | WHEEL ASSY L.H. (TINE DIA 0,276" 7mm) | *For QR8 Q.ty 4 |
| 28 | 10* | 200.010 | FLANGE | *For QR8 Q.ty 8 |
| 29 | 100* | 200.012 | TINE CLAMP | *For QR8 Q.ty 40 |
| 30 | 10* | 200.009 | RIM | *For QR8 Q.ty 8 |
| 31 | 200* | 600.005 | SCREW | *For QR8 Q.ty 160 |
| 32 | 200* | 600.029 | NUT M10 DIN 980 | *For QR8 Q.ty 160 |
| 33 | 400* | 210.621 | TINE DIA 0,276" (7mm) | *For QR8 Q.ty 320 |
| 34 | 10* | 205.041 | HUB ASSY | *For QR8 Q.ty 8 |
| 35 | 10* | 205.277 | PIN | *For QR8 Q.ty 8 |
| 36 | 10* | 600.011 | DUST COVER | *For QR8 Q.ty 8 |
| 37 | 10* | 600.012 | BEARING 30205 | *For QR8 Q.ty 8 |
| 38 | 10* | 600.013 | WHEEL HUB | *For QR8 Q.ty 8 |
| 39 | 10* | 600.301 | SPLIT PIN | *For QR8 Q.ty 8 |
| 40 | 10* | 600.014 | BEARING 30204 | *For QR8 Q.ty 8 |
| 41 | 10* | 600.015 | SELF-LOCKING NUT M18X1,5 - 6 | *For QR8 Q.ty 8 |
| 42 | 10* | 600.016 | SAFETY CAP | *For QR8 Q.ty 8 |
| 43 | 60* | 600.006 | SCREW M10 X 25 DIN 933 8.8 | *For QR8 Q.ty 40 |
| 44 | 60* | 600.024 | SPRING WASHER D 10,5 | *For QR8 Q.ty 40 |
| 45 | 60* | 600.010 | NUT M10 DIN 934 - 8 | *For QR8 Q.ty 40 |
| 46 | 4 | 630.079 | PLUG | |
| 47 | 4 | 600.092 | WASHER Ø12x36 | |

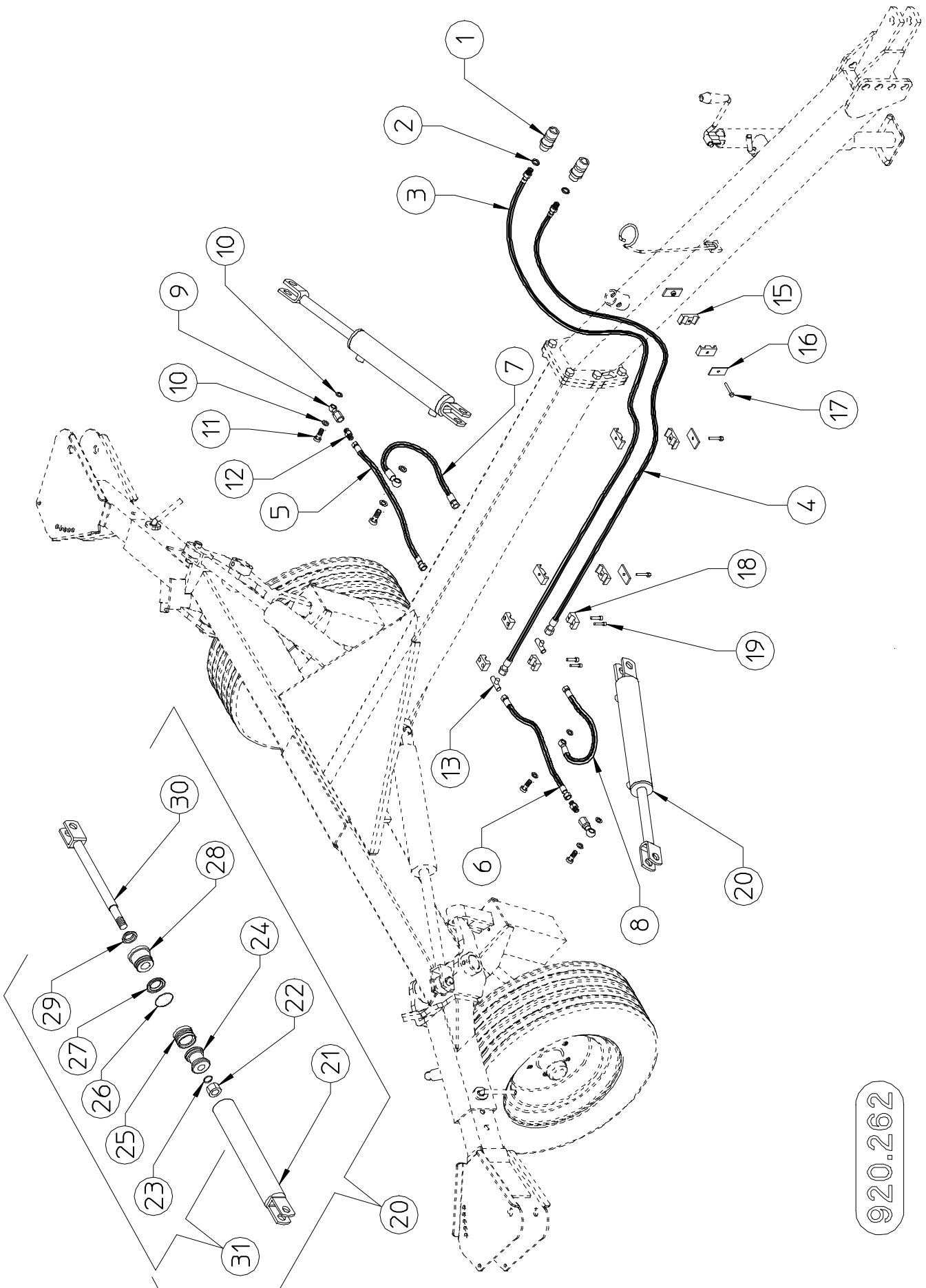
TABLE PART NO 920.264 QR/12



920.264

| TABLE PART NO 920.264 | | | | |
|-----------------------|------|---------|---------------------------------------|------|
| ITEM | Q.ty | PART NO | DESCRIPTION | NOTE |
| 1 | 2 | 230.305 | ARM | |
| 2 | 2 | 230.329 | PIN | |
| 3 | 2 | 600.632 | WASHER Ø21 DIN 125A | |
| 4 | 2 | 600.717 | NUT M20 DIN 980 | |
| 5 | 2 | 230.330 | PIN | |
| 6 | 2 | 600.308 | SPLIT PIN BC4 | |
| 7 | 2 | 600.031 | WASHER D 17 | |
| 8 | 2 | 230.309 | BUSH | |
| 9 | 2 | 600.225 | SCREW M12 X 120 DIN 931 8.8 | |
| 10 | 10 | 600.077 | NUT M12 DIN 980 | |
| 11 | 14 | 600.034 | GREASE NIPPLE M8 | |
| 12 | 1 | 230.355 | MAIN PIPE R.H. | |
| 13 | 1 | 230.356 | MAIN PIPE L.H. | |
| 14 | 1 | 230.357 | PIPE R.H. | |
| 15 | 1 | 230.358 | PIPE L.H. | |
| 16 | 3 | 230.334 | WHEEL ARM R.H. | |
| 17 | 3 | 230.336 | WHEEL ARM L.H. | |
| 18 | 6 | 200.073 | LOCK DEVICE | |
| 19 | 6 | 200.074 | PIN | |
| 20 | 6 | 200.075 | PIN | |
| 21 | 12 | 600.023 | SNAP RING E15 DIN 471 | |
| 22 | 6 | 600.019 | SPLIT PIN BC3 | |
| 23 | 8 | 600.616 | SCREW M12 X 35 DIN 933 8.8 | |
| 24 | | | | |
| 25 | | | | |
| 26 | 6 | 210.180 | WHEEL ASSY R.H. (TINE DIA 0,276" 7mm) | |
| 27 | 6 | 210.181 | WHEEL ASSY L.H. (TINE DIA 0,276" 7mm) | |
| 28 | 12 | 200.010 | FLANGE | |
| 29 | 120 | 200.012 | TINE CLAMP | |
| 30 | 12 | 200.009 | RIM | |
| 31 | 240 | 600.005 | SCREW | |
| 32 | 240 | 600.029 | NUT M10 DIN 980 | |
| 33 | 480 | 210.621 | TINE DIA 0,276" (7mm) | |
| 34 | 12 | 205.041 | HUB ASSY | |
| 35 | 12 | 205.277 | PIN | |
| 36 | 12 | 600.011 | DUST COVER | |
| 37 | 12 | 600.012 | BEARING 30205 | |
| 38 | 12 | 600.013 | WHEEL HUB | |
| 39 | 12 | 600.301 | SPLIT PIN | |
| 40 | 12 | 600.014 | BEARING 30204 | |
| 41 | 12 | 600.015 | SELF-LOCKING NUT M18X1,5 - 6 | |
| 42 | 12 | 600.016 | SAFETY CAP | |
| 43 | 72 | 600.006 | SCREW M10 X 25 DIN 933 8.8 | |
| 44 | 72 | 600.024 | SPRING WASHER D 10,5 | |
| 45 | 72 | 600.010 | NUT M10 DIN 934 - 8 | |
| 46 | 4 | 630.079 | PLUG | |

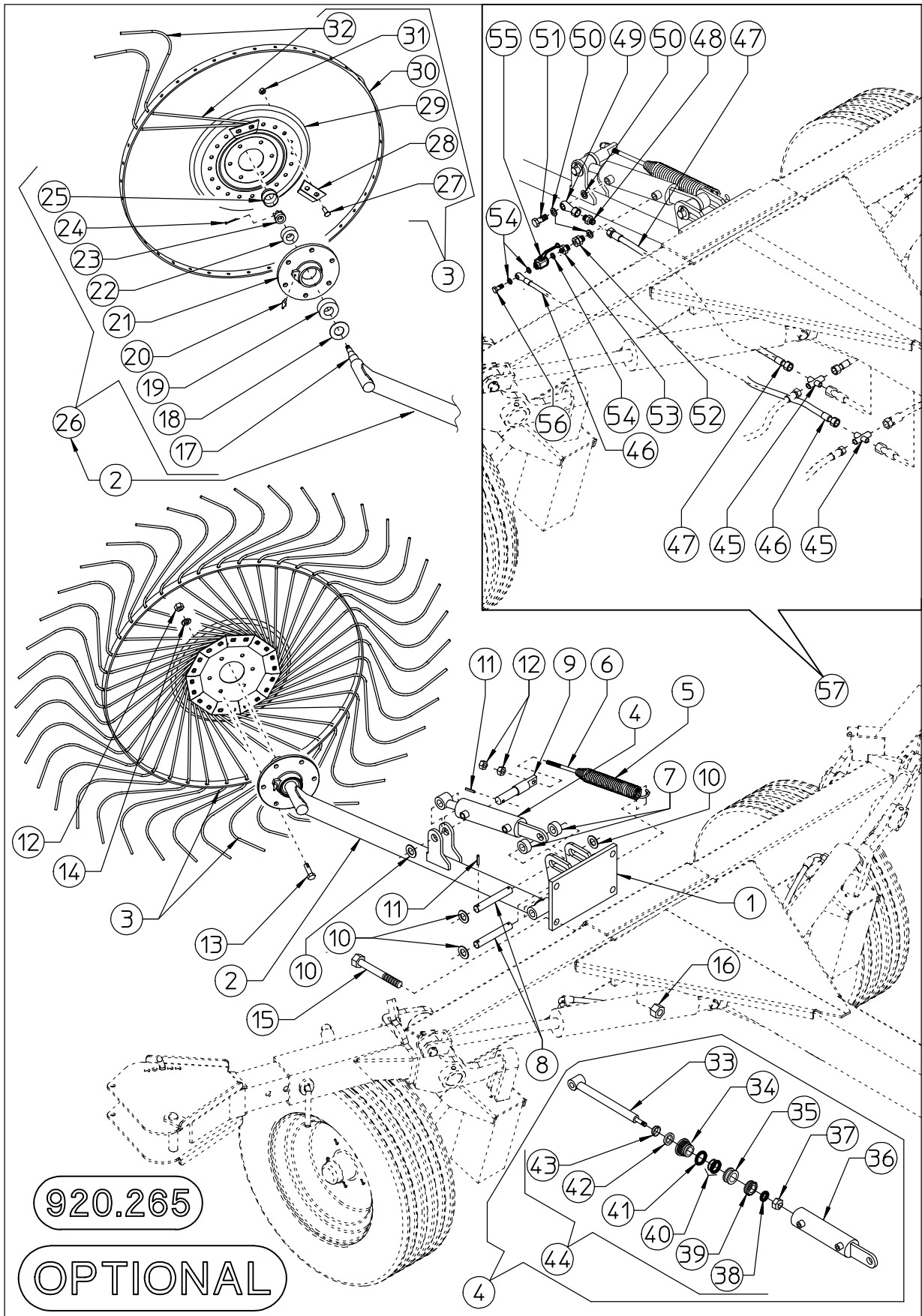
PART NO 920.262 QR/8-10-12



920.262

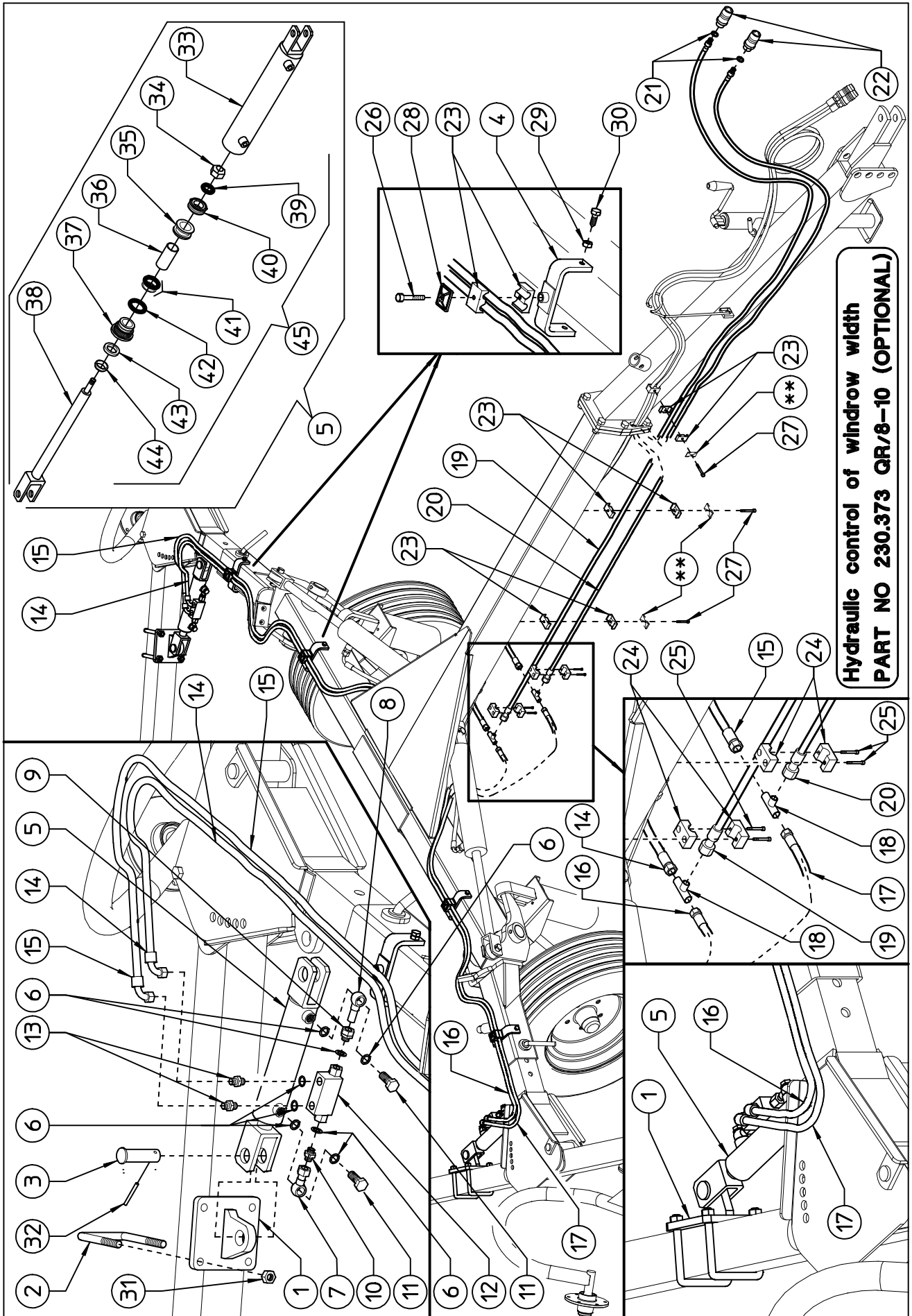
| TABLE PART NO 920.262 | | | | |
|-----------------------|------|---------|---------------------------------|-------------------|
| ITEM | Q.ty | PART NO | DESCRIPTION | NOTE |
| 1 | 2 | 600.273 | RAPID COUPLIG 1/2" | |
| 2 | 2 | 600.269 | COPPER WASHER 1/2" | |
| 3 | 1 | 630.098 | HOSE SAE100 R7 1/4" L4300 FD-MD | For QR/10-12 |
| 3 | 1 | 630.318 | HOSE SAE100 R7 1/4" L5100 FD-MD | For QR/12 |
| 4 | 1 | 630.099 | HOSE SAE100 R7 1/4" L4150 FD-MD | For QR/10-12 |
| 4 | 1 | 630.319 | HOSE SAE100 R7 1/4" L4950 FD-MD | For QR/12 |
| 5 | 1 | 630.316 | HOSE SAE100 R7 1/4" L425 FD-FD | |
| 6 | 1 | 630.317 | HOSE SAE100 R7 1/4" L545 FD-FD | |
| 7 | 1 | 630.313 | HOSE SAE100 R7 1/4" L475 FD-OC | |
| 8 | 1 | 630.314 | HOSE SAE100 R7 1/4" L420 FD-OC | |
| 9 | 2 | 630.315 | TURNING FITTING FD-OC | |
| 10 | 8 | 600.039 | COPPER WASHER 3/8" | |
| 11 | 4 | 600.040 | FITTING SCREW | |
| 12 | 2 | 200.192 | NIPPLE 3/8" - 3/8" 0,8 | |
| 13 | 2 | 600.823 | FITTING M-M-M 1/4" | |
| 14 | | | | |
| 15 | 6 | 630.078 | HOSE COLLAR | |
| 16 | 3 | 610.802 | PLATE | |
| 17 | 3 | 610.803 | SCREW M6X35 DIN 931 | |
| 18 | 4 | 610.787 | HOSE COLLAR | |
| 19 | 4 | 610.037 | SCREW M6X25 TCEI | |
| 20 | 2 | 230.302 | CYLINDER | |
| 21 | 2 | 230.385 | CYLINDER BARREL | |
| 22 | 1* | 600.879 | NUT | *For one cylinder |
| 23 | 1* | 600.983 | GASKET | *For one cylinder |
| 24 | 2 | 210.227 | PISTON | |
| 25 | 1* | 600.984 | GASKET | *For one cylinder |
| 26 | 1* | 600.982 | GASKET | *For one cylinder |
| 27 | 1* | 610.031 | GASKET | *For one cylinder |
| 28 | 2 | 210.569 | CYLINDER HEAD | |
| 29 | 1* | 600.645 | GASKET | *For one cylinder |
| 30 | 2 | 230.386 | ROD | |
| 31 | 1* | 610.340 | SET OF GASKET | *For one cylinder |

PART NO 920.265 QR/8-10-12



| TABLE PART NO 920.265 | | | | |
|-----------------------|------|---------|---------------------------------------|----------|
| ITEM | Q.ty | PART NO | DESCRIPTION | NOTE |
| 1 | 1 | 230.306 | SUPPORT | |
| 2 | 1 | 230.374 | ARM | |
| 3 | 1 | 200.802 | WHEEL ASSY L.H. (TINE DIA 0,276" 7mm) | |
| 4 | 1 | 230.375 | CYLINDER | |
| 5 | 1 | 230.376 | SPRING | |
| 6 | 1 | 210.173 | TIE ROD | |
| 7 | 2 | 230.377 | SPACER | |
| 8 | 2 | 230.378 | PIN | |
| 9 | 1 | 230.379 | PIN | |
| 10 | 5 | 600.632 | WASHER ø21 DIN 125A | |
| 11 | 5 | 600.538 | SPING PIN ø6x35 DIN 1481 | |
| 12 | 8 | 600.010 | NUT M10 DIN 934 | |
| 13 | 6 | 600.006 | SCREW M10 x 25 DIN 933 | |
| 14 | 6 | 600.024 | SPRING WASHER D 10,5 similar to | DIN 127B |
| 15 | 4 | 600.219 | SCREW M16x150 DIN 931 | |
| 16 | 4 | 600.080 | NUT M16 DIN 980 | |
| 17 | 1 | 205.277 | PIN | |
| 18 | 1 | 600.011 | DUST COVER | |
| 19 | 1 | 600.012 | BEARING 30205 | |
| 20 | 1 | 600.034 | GREASE NIPPLE M8 | |
| 21 | 1 | 600.013 | WHEEL HUB | |
| 22 | 1 | 600.014 | BEARING 30204 | |
| 23 | 1 | 600.015 | SELF-LOCKING NUT M18x1,5 | |
| 24 | 1 | 600.301 | SPLIT PIN ø3x30 DIN 94 | |
| 25 | 1 | 600.016 | SAFETY CAP | |
| 26 | 1 | 205.041 | HUB ASSY | |
| 27 | 20 | 600.005 | SCREW M10x25 DIN 603 | |
| 28 | 10 | 200.012 | TINE CLAMP | |
| 29 | 1 | 200.010 | FLANGE | |
| 30 | 1 | 200.840 | RIM | |
| 31 | 20 | 600.029 | NUT M10 DIN 980 | |
| 32 | 40 | 200.841 | TINE DIA 0,276" (7mm) | |
| 33 | 1 | 230.400 | ROD ø20 | |
| 34 | 1 | 230.398 | HEAD ø40/20 | |
| 35 | 1 | 230.397 | PISTON ø40 | |
| 36 | 1 | 230.399 | CYLINDER BARREL ø40/50 | |
| 37 | 1 | 600.121 | NUT M18x1,5 DIN 985 | |
| 38 | 1 | 630.322 | GASKET OR ø12,34x2,62 | |
| 39 | 1 | 610.028 | GASKET DBM 157118 | |
| 40 | 1 | 630.321 | GASKET OR ø36,14x2,62 + BK | |
| 41 | 1 | 630.323 | GASKET OR ø39,34x2,62 | |
| 42 | 1 | 630.324 | GASKET ø20/28x5,8 | |
| 43 | 1 | 610.025 | GASKET WRM 078110 | |
| 44 | 1 | 630.325 | SET OF GASKET | |
| 45 | 2 | 620.978 | FITTING 1/4" | |
| 46 | 1 | 620.980 | HOSE SAE 100R7x1/4" | |
| 47 | 1 | 620.979 | HOSE SAE 100R7x1/4" | |
| 48 | 1 | 200.192 | NIPPLE 3/8"-3/8" WITH ORIFICE 0,8 | |
| 49 | 1 | 630.315 | FITTING 3/8" | |
| 50 | 3 | 600.039 | COPPER WASHER 3/8" | |
| 51 | 1 | 600.040 | FITTING 3/8" | |
| 52 | 1 | 600.271 | FITTING 3/8" MALE-3/8" FEMALE | |
| 53 | 1 | 600.883 | NIPPLE 1/4"-3/8" | |
| 54 | 3 | 600.819 | COPPER WASHER 1/4" | |
| 55 | 1 | 620.492 | VALVE 1/4" 170 bar | |
| 56 | 1 | 600.820 | FITTING 1/4" | |
| 57 | 1 | 230.344 | HYDRAULIC KIT | |
| * | 1 | 230.371 | COMPLETE KIT | OPTIONAL |

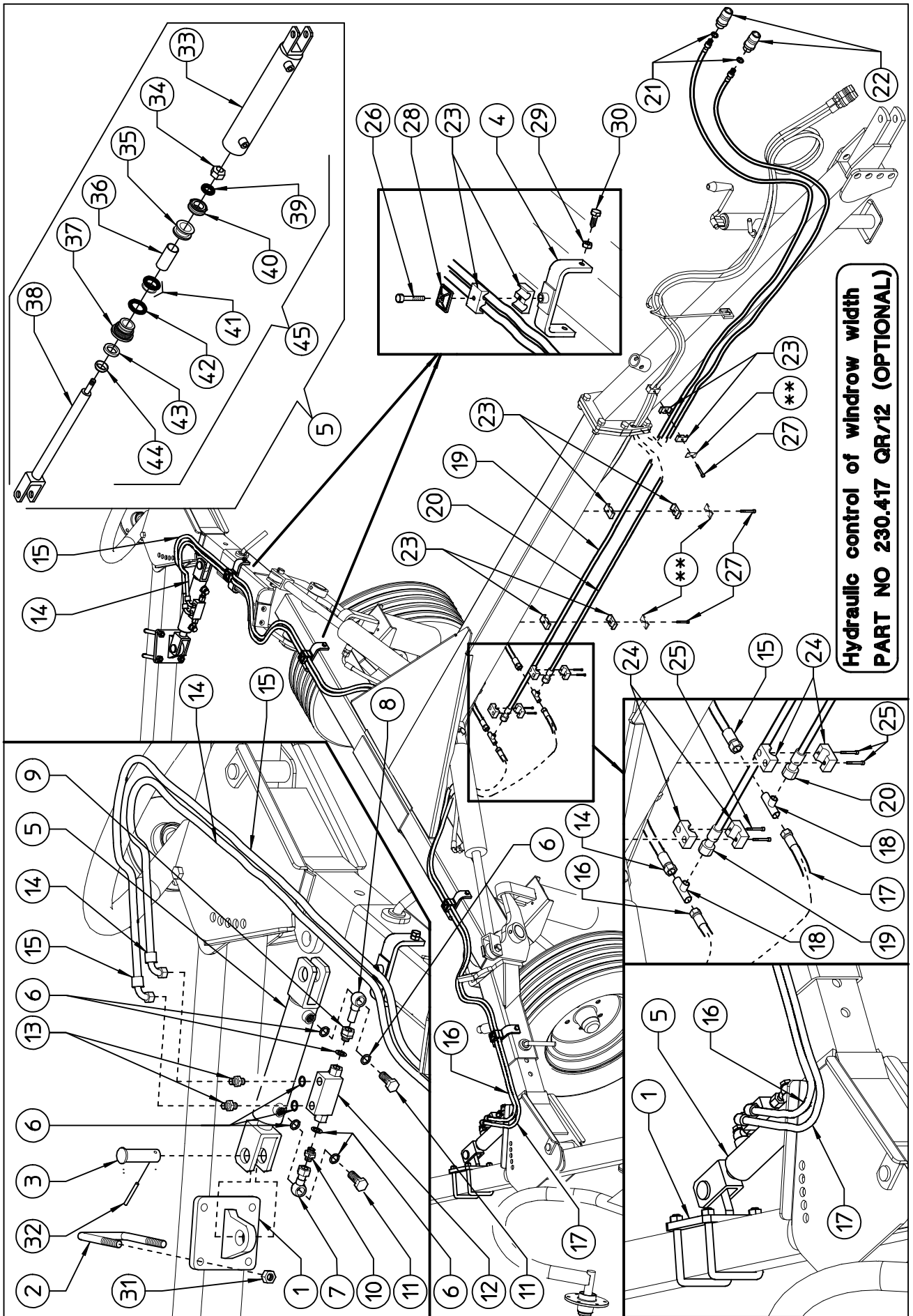
PART NO 230.373 QR 8/10 (OPTIONAL)



**Hydraulic control of windrow width
PART NO 230.373 QR/8-10 (OPTIONAL)**

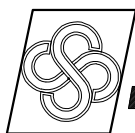
| HYDRAULIC CONTROL OF WINDROW WIDTH - PART NO 230.373 (OPTIONAL) | | | | |
|---|--|---------|------------------------------------|------|
| ITEM | Q.ty | PART NO | DESCRIPTION | NOTE |
| 1 | 2 | 230.401 | CYLINDER SUPPORT | |
| 2 | 4 | 200.722 | U BOLT M12 | |
| 3 | 4 | 230.402 | PIN | |
| 4 | 4 | 230.408 | HOSE SUPPORT | |
| 5 | 2 | 230.383 | CYLINDER | |
| 6 | 16 | 600.819 | COPPER WASHER ϕ 1/4" | |
| 7 | 2 | 630.332 | FITTING 1/4" | |
| 8 | 2 | 230.412 | TUBE | |
| 9 | 2 | 630.334 | FITTING MALE 1/4" FEMALE ϕ 12 | |
| 10 | 2 | 630.331 | NIPPLE 1/4"-1/4" WITH ORIFICE 0,6 | |
| 11 | 4 | 600.820 | FITTING 1/4" | |
| 12 | 2 | 630.333 | LOCK VALVE 1/4" | |
| 13 | 4 | 630.320 | NIPPLE 1/4"-1/4" | |
| 14 | 1 | 630.335 | HOSE 1/4" LENGHT 1900mm-74,80" | |
| 15 | 1 | 630.336 | HOSE 1/4" LENGHT 2150mm-84,65" | |
| 16 | 1 | 630.337 | HOSE 1/4" LENGHT 2000mm-78,74" | |
| 17 | 1 | 630.338 | HOSE 1/4" LENGHT 2050mm-80,71" | |
| 18 | 2 | 600.823 | FITTING MALE 1/4" | |
| 19 | 1 | 630.098 | HOSE 1/4" LENGHT 4300mm-169,29" | |
| 20 | 1 | 630.099 | HOSE 1/4" LENGHT 4150mm-163,38" | |
| 21 | 2 | 600.269 | COPPER WASHER ϕ 1/2" | |
| 22 | 2 | 600.273 | RAPID COUPLING 1/2" | |
| 23 | 14 | 630.078 | DOUBLE HOSE COLLAR ϕ 12 | |
| 24 | 4 | 610.787 | HOSE COLLAR ϕ 14 | |
| 25 | 4 | 610.901 | SCREW M6x60 DIN 912 | |
| 26 | 4 | 610.803 | SCREW M6x35 DIN 931 | |
| 27 | 3 | 600.970 | SCREW M6x60 DIN 931 | |
| 28 | 4 | 610.802 | COLLAR CLAMP | |
| 29 | 8 | 600.037 | NUT M8 DIN 934 | |
| 30 | 8 | 630.339 | SCREW M8x25 (PARTICULAR) | |
| 31 | 8 | 600.077 | NUT M12 DIN 980 | |
| 32 | 4 | 600.538 | SPRING PIN ϕ 6x35 DIN 1481 | |
| 33 | 2 | 230.409 | CYLINDER BARREL ϕ 40/50 | |
| 34 | 2 | 600.121 | NUT M18x1,5 DIN 985 | |
| 35 | 2 | 230.397 | PISTON ϕ 40 | |
| 36 | 2 | 230.411 | SPACER | |
| 37 | 2 | 230.398 | HEAD ϕ 40/20 | |
| 38 | 2 | 230.410 | ROD ϕ 20 | |
| 39 | 2 | 630.322 | GASKET OR ϕ 12,34x2,62 | |
| 40 | 2 | 610.028 | GASKET DBM 157118 | |
| 41 | 2 | 630.321 | GASKET OR ϕ 36,14x2,62 + BK | |
| 42 | 2 | 630.323 | GASKET OR ϕ 39,34x2,62 | |
| 43 | 2 | 630.324 | GASKET ϕ 20/28x5,8 | |
| 44 | 2 | 610.025 | GASKET WRM 078110 | |
| 45 | 2 | 630.325 | SET OF GASKET | |
| ** | USE THE PIECES ALL READY FITTED ON THE MACHINE | | | |

PART NO 230.417 QR/12 (OPTIONAL)



**Hydraulic control of windrow width
PART NO 230.417 QR/12 (OPTIONAL)**

| HYDRAULIC CONTROL OF WINDROW WIDTH-PART NO 230.417 FOR QR/12 (OPTIONAL) | | | | |
|---|--|---------|-----------------------------------|------|
| ITEM | Q.ty | PART NO | DESCRIPTION | NOTE |
| 1 | 2 | 230.401 | CYLINDER SUPPORT | |
| 2 | 4 | 200.722 | U BOLT M12 | |
| 3 | 4 | 230.402 | PIN | |
| 4 | 4 | 230.408 | HOSE SUPPORT | |
| 5 | 2 | 230.383 | CYLINDER | |
| 6 | 16 | 600.819 | COPPER WASHER ø1/4" | |
| 7 | 2 | 630.332 | FITTING 1/4" | |
| 8 | 2 | 230.412 | TUBE | |
| 9 | 2 | 630.334 | FITTING MALE 1/4" FEMALE ø12 | |
| 10 | 2 | 630.331 | NIPPLE 1/4"-1/4" WITH ORIFICE 0,6 | |
| 11 | 4 | 600.820 | FITTING 1/4" | |
| 12 | 2 | 630.333 | LOCK VALVE 1/4" | |
| 13 | 4 | 630.320 | NIPPLE 1/4"-1/4" | |
| 14 | 1 | 630.335 | HOSE 1/4" LENGHT 1900mm-74,80" | |
| 15 | 1 | 630.336 | HOSE 1/4" LENGHT 2150mm-84,65" | |
| 16 | 1 | 630.337 | HOSE 1/4" LENGHT 2000mm-78,74" | |
| 17 | 1 | 630.338 | HOSE 1/4" LENGHT 2050mm-80,71" | |
| 18 | 2 | 600.823 | FITTING MALE 1/4" | |
| 19 | 1 | 630.318 | HOSE 1/4" LENGHT 5100mm-200,78" | |
| 20 | 1 | 630.319 | HOSE 1/4" LENGHT 4950mm-194,88" | |
| 21 | 2 | 600.269 | COPPER WASHER ø1/2" | |
| 22 | 2 | 600.273 | RAPID COUPLING 1/2" | |
| 23 | 14 | 630.078 | DOUBLE HOSE COLLAR ø12 | |
| 24 | 4 | 610.787 | HOSE COLLAR ø14 | |
| 25 | 4 | 610.901 | SCREW M6x60 DIN 912 | |
| 26 | 4 | 610.803 | SCREW M6x35 DIN 931 | |
| 27 | 3 | 600.970 | SCREW M6x60 DIN 931 | |
| 28 | 4 | 610.802 | COLLAR CLAMP | |
| 29 | 8 | 600.037 | NUT M8 DIN 934 | |
| 30 | 8 | 630.339 | SCREW M8x25 (PARTICULAR) | |
| 31 | 8 | 600.077 | NUT M12 DIN 980 | |
| 32 | 4 | 600.538 | SPRING PIN ø6x35 DIN 1481 | |
| 33 | 2 | 230.409 | CYLINDER BARREL ø40/50 | |
| 34 | 2 | 600.121 | NUT M18x1,5 DIN 985 | |
| 35 | 2 | 230.397 | PISTON ø40 | |
| 36 | 2 | 230.411 | SPACER | |
| 37 | 2 | 230.398 | HEAD ø40/20 | |
| 38 | 2 | 230.410 | ROD ø20 | |
| 39 | 2 | 630.322 | GASKET OR ø12,34x2,62 | |
| 40 | 2 | 610.028 | GASKET DBM 157118 | |
| 41 | 2 | 630.321 | GASKET OR ø36,14x2,62 + BK | |
| 42 | 2 | 630.323 | GASKET OR ø39,34x2,62 | |
| 43 | 2 | 630.324 | GASKET ø20/28x5,8 | |
| 44 | 2 | 610.025 | GASKET WRM 078110 | |
| 45 | 2 | 630.325 | SET OF GASKET | |
| ** | USE THE PIECES ALL READY FITTED ON THE MACHINE | | | |



AGRICULTURAL MACHINERY
sitrex® Spa .

Zona Industriale-Viale Grecia, 8
06018 TRESTINA-(Perugia)-ITALY
Tel. +39.075.8540021-Telefax +39.075.8540523
e-mail: sitrex@sitrex.it www.sitrex.com

